

# 591 CUMBERLAND PLACE

*Departure Bay*

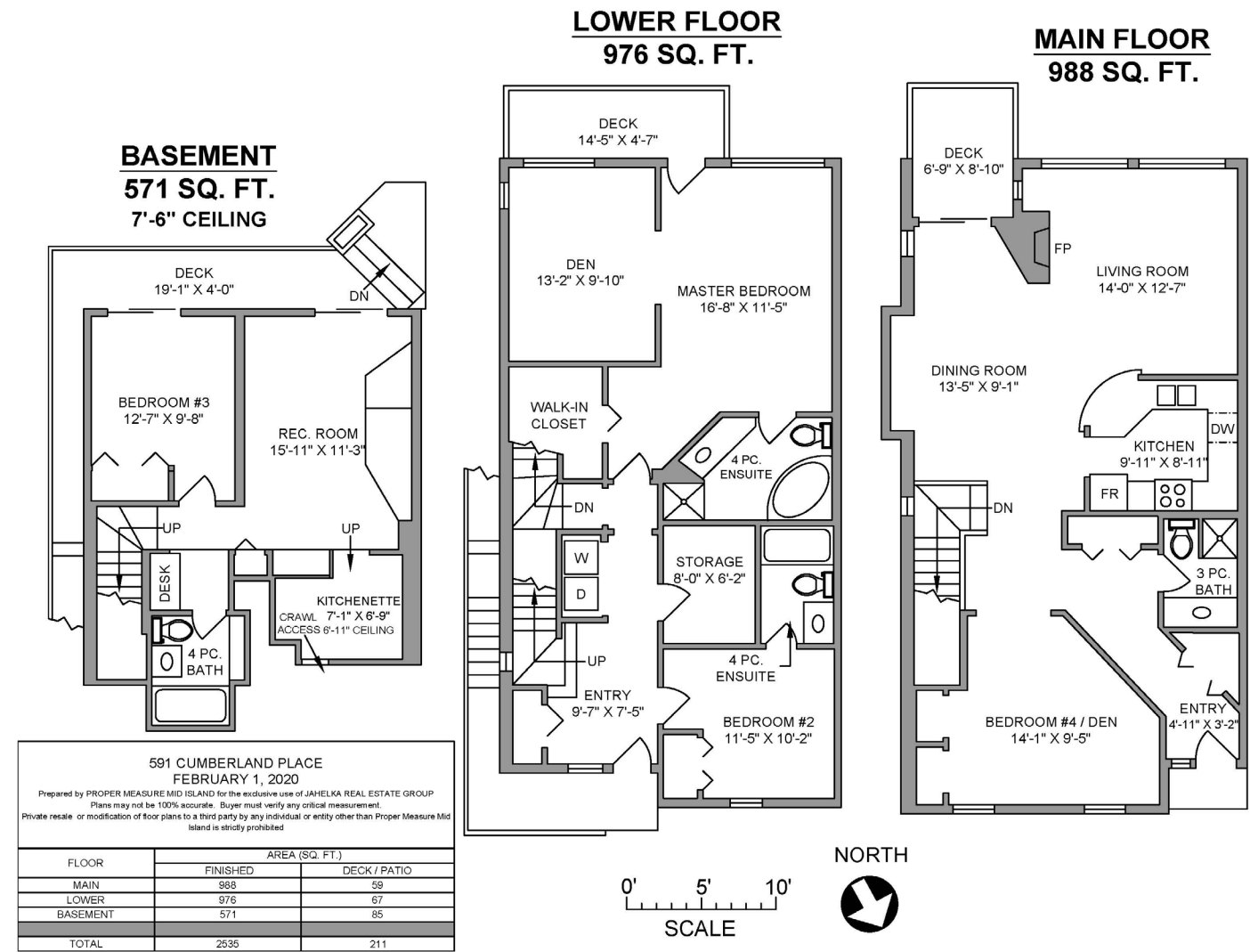


**JAHELKA REAL ESTATE GROUP**

Real Estate Redefined







## WELCOME HOME...

Stunning views of Newcastle Island, Departure Bay, the City, and mountains draw you into this home, situated on a quiet cul-de-sac in a highly desirable Departure Bay neighbourhood in close proximity to the beach, schools, and to all the amenities and conveniences the area offers.

Featuring 2,535 sqft of living space with 4 bedrooms and 4 full bathrooms over 3 storeys, this side-by-side half duplex in a small strata boasts spectacular views and decks on each floor from which to enjoy them, with a low maintenance outdoor space and ample parking complementing the west coast lifestyle this property will afford those fortunate enough to call it home.

With level entry to the main floor just steps from the parking area, the functional layout offers an open concept living/dining and kitchen with a family room, complete with a cozy gas fireplace, the true heart of this home, while a fourth bedroom that also serves as a den and a 3-piece bathroom round off this space.

Two bedrooms including the master, both with ensuites, are located one floor below with the master suite also offering a walk-in closet, den, and access to a private view deck the ideal place to unwind at the end of a long day as the ferries and seaplanes come and go, while laundry facilities, storage, a convenient exterior door, and access to the basement complete this lower floor.

The basement offers an extension of the living space and is the perfect spot for overnight guests or extended family with a bedroom, a rec room, a 4-piece bathroom, and a kitchenette providing comfortable and convenient additional accommodation, with access to the outdoor space enhancing this level.

If you are looking for an attractively priced home with breathtaking views in a highly sought after area, this property won't disappoint. Please verify all data and measurements if important.

\*Please note, images were taken in 2020 when the previous tenant was in place.

## FEATURES

- Style:** Side x Side, Half-Duplex in a 3 Unit strata
- Bedrooms:** 4
- Bathrooms:** 4
- Living Area:** 2,535 sqft
- View:** Harbour, City, Mountain Views
- Year Built:** 1994





## FEATURED LISTING

by *Carlee Jahelka, BA*  
PERSONAL REAL ESTATE CORPORATION

C 250.616.1020

P 250.751.0804

TF 1.800.377.4374

[carlee@jahelkagroup.com](mailto:carlee@jahelkagroup.com)

[www.jahelkarealestategroup.com](http://www.jahelkarealestategroup.com)

[www.vancouverislandpropertysearch.com](http://www.vancouverislandpropertysearch.com)



## JAHELKA REAL ESTATE GROUP

Real Estate Redefined



Royal LePage Nanaimo Realty  
4200 N Island Highway, Nanaimo  
BC V9T 1W6

