

# 2827 COSGROVE CRESCENT

*Departure Bay*



**JAHELKA REAL ESTATE GROUP**

Real Estate Redefined







## WELCOME HOME...

Ideal for the growing family, this updated Lynburn home is located in a desirable Departure Bay neighbourhood, close to recreation, schools, & amenities.

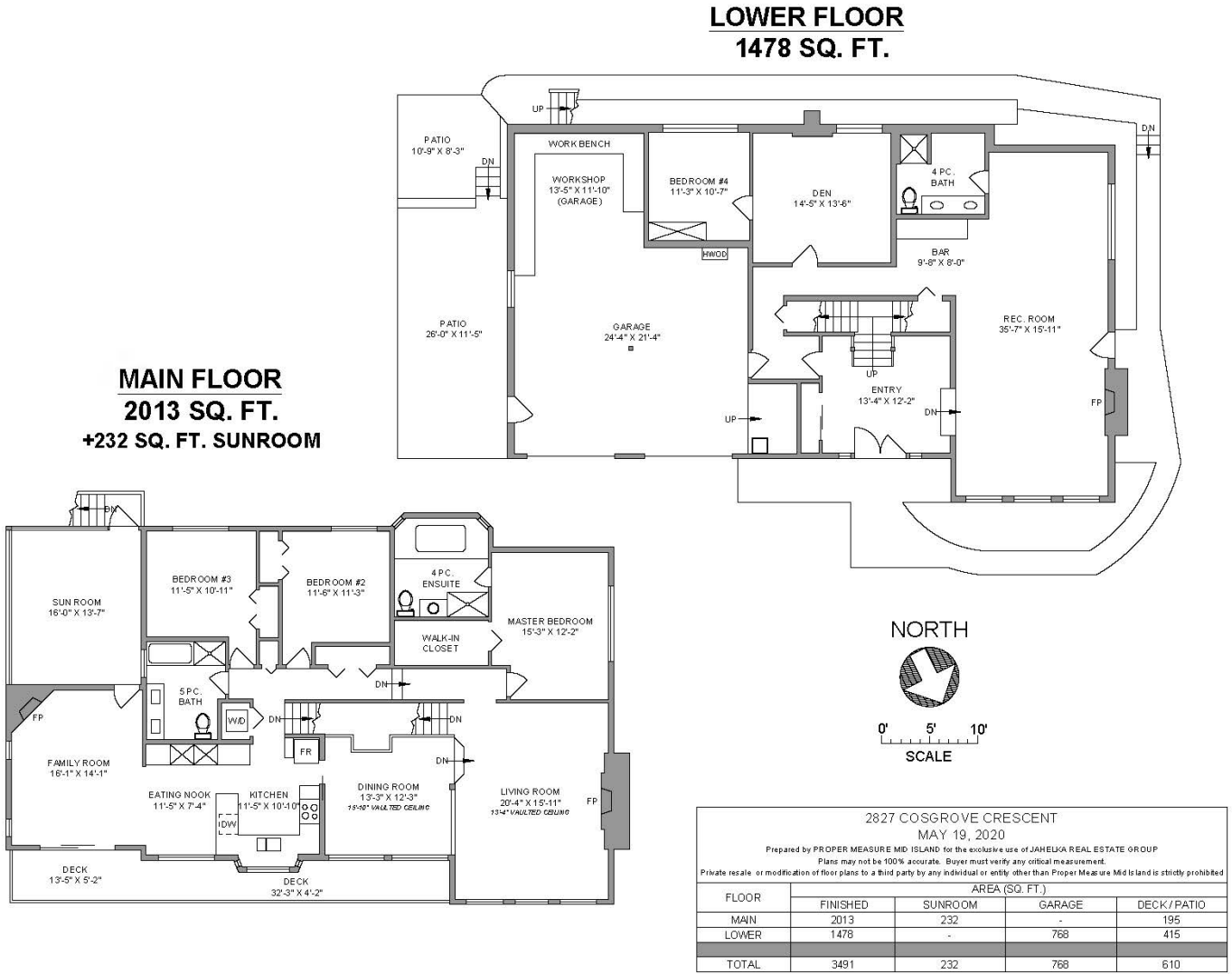
Overlooking the Bay & boasting views of the ocean & coastal mountains beyond, this well-maintained home offers 3,491 sqft of functional living space comprising 4 beds & 3 baths & is situated on a 0.22-acre low maintenance corner lot with a double garage & workshop, 2 driveways, & extra parking.

Double doors welcome you into a spacious foyer & up to the main level with maple hardwood, crown molding, & chair rail throughout. The impressive formal living room offers 13' vaulted ceilings, full-height windows, & a stacked stone fireplace focal point, while the adjoining dining area features 16' ceilings providing a bright & airy space to gather for a meal. The well-appointed kitchen, complete with shaker style cabinets, stainless steel appliances, & marble counters, meets all the chef's needs, while a convenient eating nook, offering a welcome spot for a casual meal, leads to the family room providing access to the view deck the ideal venue for BBQ season, & to a sunroom in the rear for inclement days.

There are 3-beds on the main level including the master with walk-in closet & a tastefully finished 4-piece ensuite with a heated floor, walk-in shower, & soaker tub, while a 5-piece bath & convenient laundry facilities round off this floor.

The ground level offers an extension of the living space & is the perfect place for overnight guests or extended family with a 4th bed, a large rec room, a 4-piece bath, & a kitchen area providing comfortable & convenient additional accommodation.

With extras such as hot water on demand & a radiant hot water heating system, this comfortable, well-finished home with its desirable location & views is the ideal package that won't disappoint. Data & measurements have been provided by Proper Measure, BC Assessment, & the Property Report, & should be verified if important.







## FEATURED LISTING

by *Carlee Jahelka, BA*  
PERSONAL REAL ESTATE CORPORATION

C 250.616.1020

P 250.751.0804

TF 1.800.377.4374

[carlee@jahelkagroup.com](mailto:carlee@jahelkagroup.com)

[www.jahelkarealestategroup.com](http://www.jahelkarealestategroup.com)

[www.vancouverislandpropertysearch.com](http://www.vancouverislandpropertysearch.com)



**JAHELKA REAL ESTATE GROUP**

Real Estate Redefined



*Royal LePage Nanaimo Realty*  
4200 N Island Highway, Nanaimo  
BC V9T 1W6

