

205 PINE STREET

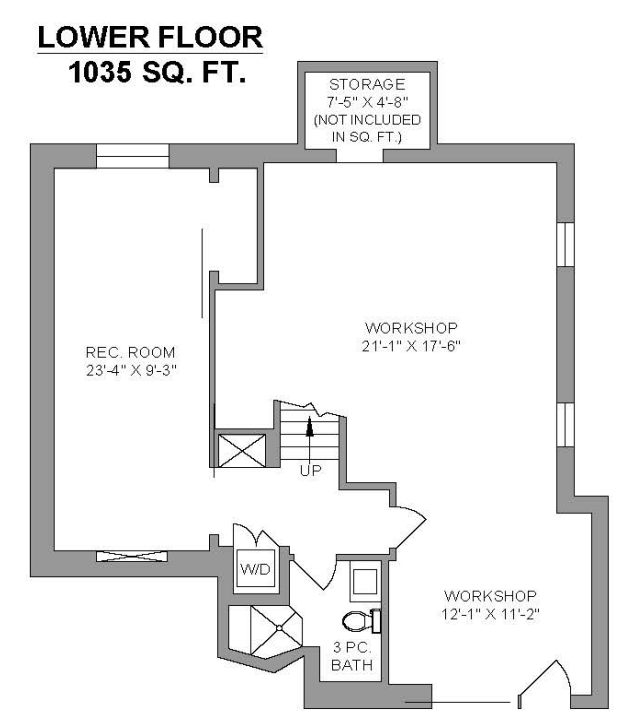
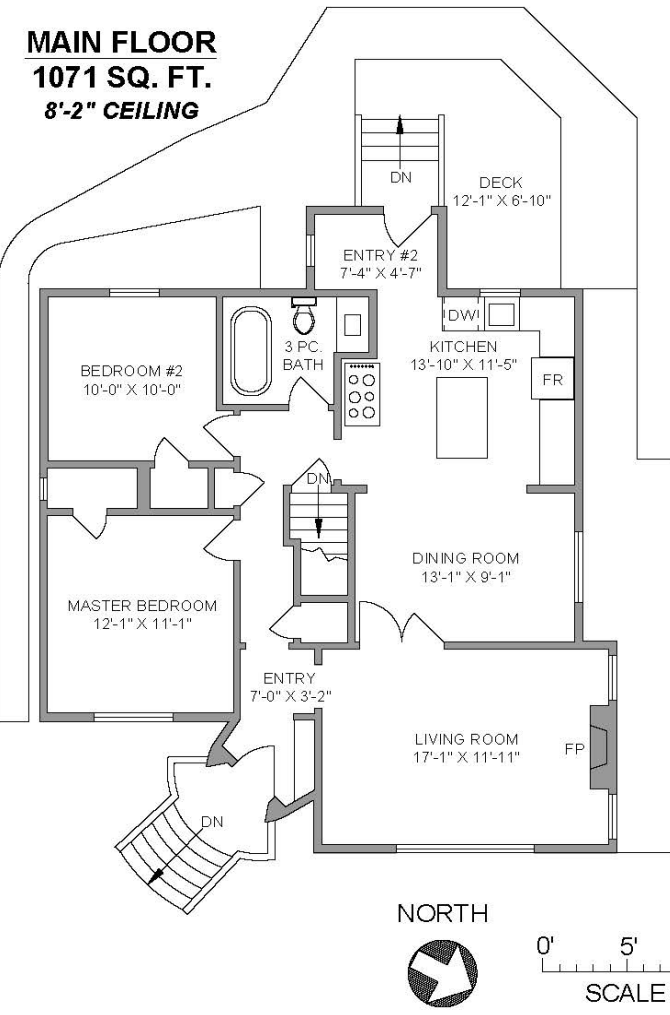
Old City | Nanaimo



JAHELKA REAL ESTATE GROUP

Real Estate Redefined





205 PINE STREET
MAY 22, 2020

Prepared by PROPER MEASURE MID ISLAND for the exclusive use of JAHUKA REAL ESTATE GROUP
Plans may not be 100% accurate. Buyer must verify any critical measurement.
Private resale or modification of floor plans to a third party by any individual or entity other than Proper Measure Mid Island is strictly prohibited.

FLOOR	AREA (SQ. FT.)		
	FINISHED	UNFINISHED	DECK / PATIO
MAIN	1071	-	90
BASEMENT	470	565	-
TOTAL	1541	565	90

WELCOME HOME...

Extensively updated main level entry home situated on a 0.15-acre Old City lot with access from Pine and Harvey, conveniently located a short distance from all amenities and Nanaimo's downtown.

Offering 1,541 sqft of finished living space with 2 bedrooms and 2 bathrooms, this home boasts charming features of the era in which it was built whilst benefiting from a top to bottom renovation.

The formal living room, just off the main entry, features custom leaded-glass windows and a cozy fireplace around which to gather on chilly evenings, and transitions through to the spacious dining area and new kitchen, now offering a modern open concept and boasting high-end retro appliances, an integrated dishwasher, and an apron-front sink that preserves the period look and feel. Both the master and second bedroom are conveniently located on the main floor while the tastefully finished 3-piece spa-like main bathroom with a classic clawfoot tub, conveying a sense of luxury, completes this floor.

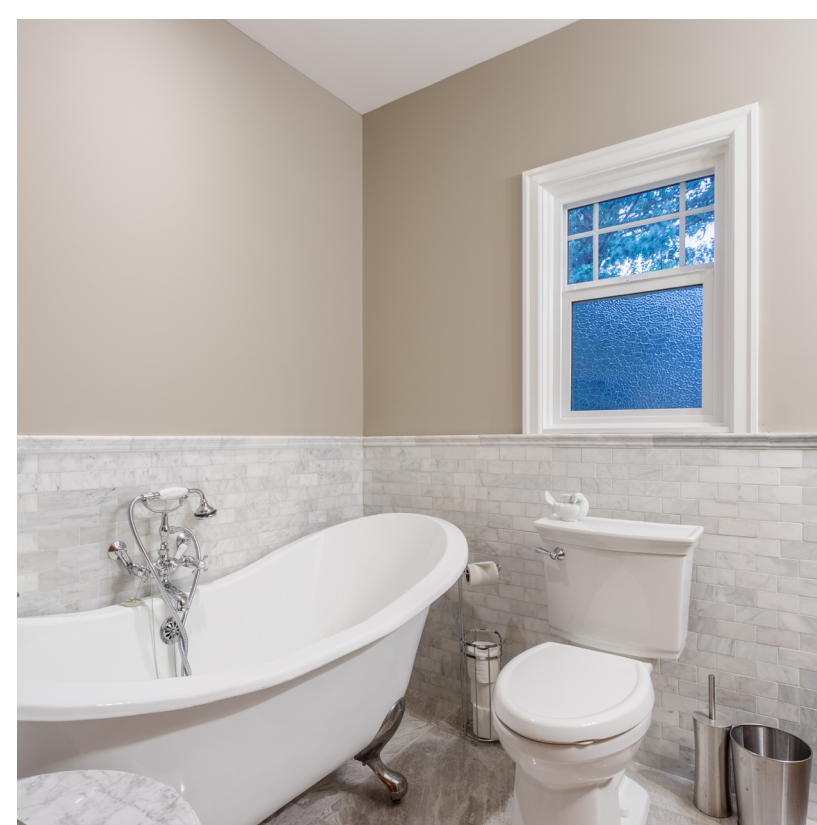
A brand new, contemporary second bathroom downstairs boasts a custom shower with a heated floor and bench, while the rec room is the perfect venue for games or movie night, and a large workshop, the ideal space for projects, will meet all your storage needs.

Updates to this home are numerous and include all-new fixtures, fittings, windows, and doors, refinished flooring, new electrical, upgraded above-slab plumbing, and the vermiculite has also been removed, ensuring that everything has been taken care of.

If you are seeking a completely updated, move-in-ready main level entry character home in the Old City, you won't want to miss this opportunity! Data and measurements should be verified if important.

FEATURES

- Style:* Main Level Entry + Basement
- Bedrooms:* 2
- Bathrooms:* 2
- Living Area:* 1,541 Sqft.
- Lot Size:* 0.15 Acres
- Features:* Access from 2 streets, extensive updates





FEATURED LISTING
by Julien Prevost, BA Econ

C 778.269.1043
P 250.751.0804
TF 1.800.377.4374
julien@jahelkagroup.com
www.jahelkarealestategroup.com
www.vancouverislandpropertysearch.com



JAHELKA REAL ESTATE GROUP
Real Estate Redefined

Royal LePage Nanaimo Realty **COMMERCIAL**
4200 N Island Highway, Nanaimo
BC V9T 1W6 **ROYAL LEPAGE**
NANAIMO REALTY