

307-4701 Uplands Drive
Uplands



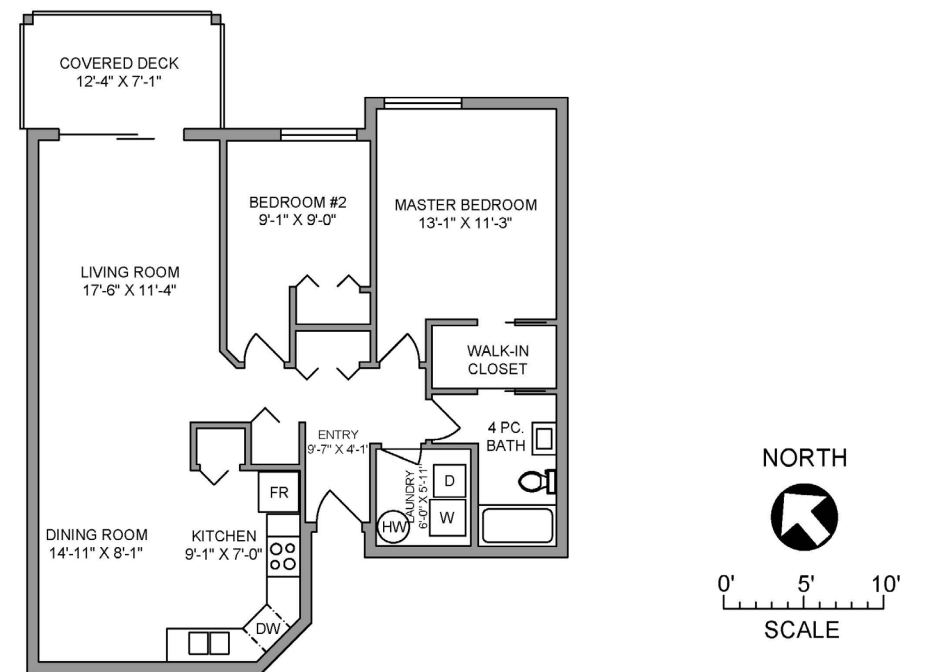
JAHELKA REAL ESTATE GROUP

Real Estate Redefined





MAIN FLOOR
987 SQ. FT.
8'-0" CEILING



307-4701 UPLANDS DRIVE SEPTEMBER 12, 2020 <small>Prepared by PROPER MEASURE MID ISLAND for the exclusive use of JOHN COOPER GROUP Plans may not be 100% accurate. Buyer must verify any critical measurement. Private resale or modification of floor plans to a third party by any individual or entity other than Proper Measure Mid Island is strictly prohibited.</small>		
FLOOR	AREA (SQ. FT.)	
	FINISHED	DECK / PATIO
MAIN	987	86

WELCOME HOME...

Boasting the ideal location across the street from the Nanaimo North Town Centre, the new owner of this Rutherford Heights condo will appreciate the close proximity to shopping, restaurants, and transit as well as the recreational opportunities offered in the trails of nearby Oliver Woods and the Community Centre.

Upon entering this 3rd-floor condo, you will be drawn in by the spacious and functional floor plan offering 987 sqft of living space with 2 bedrooms and 1 bathroom, and accentuated by large windows in the front-facing rooms that flood the space with natural light.

The well-appointed kitchen offers white cabinetry with a spacious, open design, a welcome departure from the traditional galley style, with ample storage for all your culinary needs and a convenient dining area to gather at mealtimes, while the cozy living room leads to the covered deck, extending the living space for morning coffee or for relaxing on a warm evening. There are two bright and comfortable bedrooms, with the master featuring cheater ensuite access to the 4-piece bathroom through a walk-in closet, while a laundry room provides extra storage and rounds off the living space of this home.

A well-run strata, Rutherford Heights provides secured entry and an elevator and offers its residents an assigned parking stall, in addition to which, pets and rentals are allowed, with some restrictions.

The perfect package for downsizers or new homeowners, if you are looking for a lifestyle change, this well-situated, move-in ready condo will not disappoint.

Data & measurements have been provided by the Strata Management Company, Proper Measure, BC Assessment, and the Property Report, and should be verified if important.

FEATURES

- Building:** Rutherford Heights
- Bedrooms:** 2
- Bathrooms:** 1
- Living Area:** 987 sqft
- Parking:** 1 Stall
- Heating:** Forced Air, Electric
- Strata Fee:** \$248/month
- Taxes:** \$1,929 (2020)



FEATURED LISTING

by Carlee Jahelka, BA
PERSONAL REAL ESTATE CORPORATION

C 250.616.1020

P 250.751.0804

TF 1.800.377.4374

carlee@jahelkagroup.com

www.jahelkarealestategroup.com

www.vancouverislandpropertysearch.com



JAHELKA REAL ESTATE GROUP

Real Estate Redefined



Royal LePage Nanaimo Realty
4200 N Island Highway, Nanaimo
BC V9T 1W6

