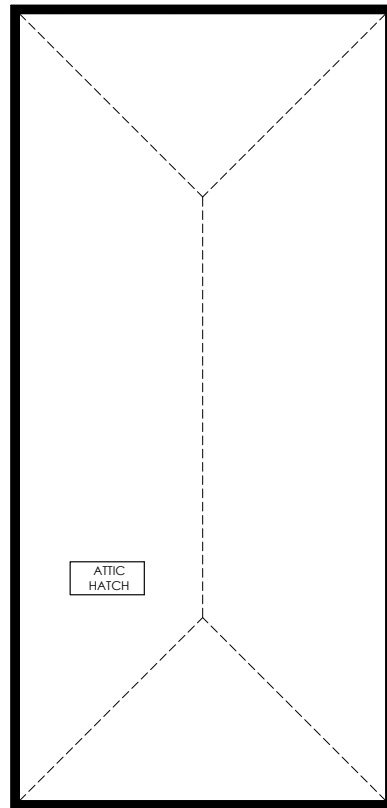
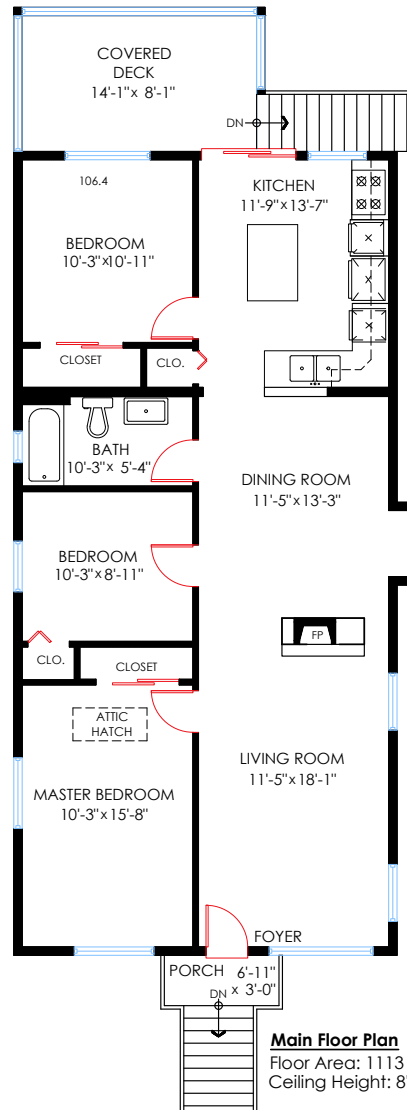


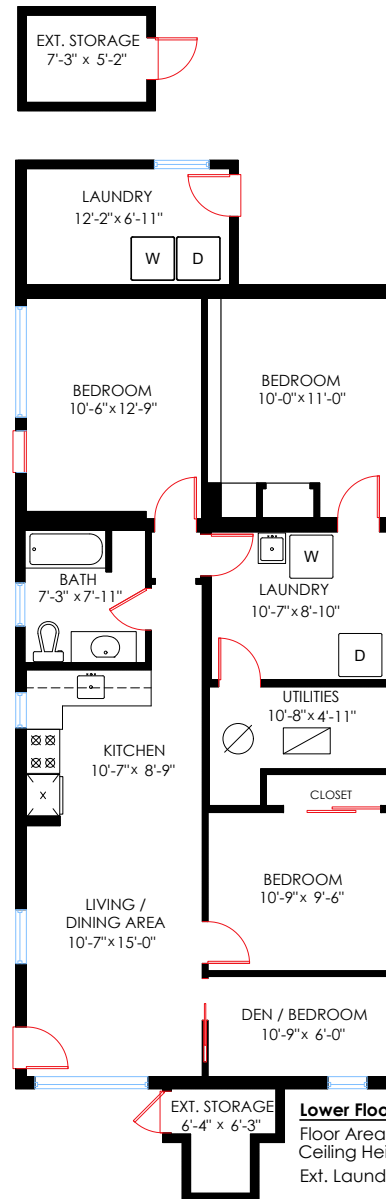
4152 Penticton St, Vancouver



Attic Floor Plan
Floor Area: 1105 sq.ft.
Vaulted Ceiling: 8'-2"



Main Floor Plan
Floor Area: 1113 sq.ft.
Ceiling Height: 8'-10"



Lower Floor Plan
Floor Area: 1106 sq.ft.
Ceiling Height: 6'-8"
Ext. Laundry: 99 sq.ft.

| | |
|----------------------|---------------------|
| Main Floor: | 1,113 sq.ft. |
| Lower Floor: | 1,106 sq.ft. |
| Sub Total: | 2,219 sq.ft. |
| Attic Floor: | 1,105 sq.ft. |
| Ext. Laundry: | 99 sq.ft. |
| Total: | 3,423 sq.ft. |
| Ext. Storages: | 91 sq.ft. |
| Covered Deck: | 114 sq.ft. |
| Porch: | 21 sq.ft. |
| Total Extras: | 226 sq.ft. |

