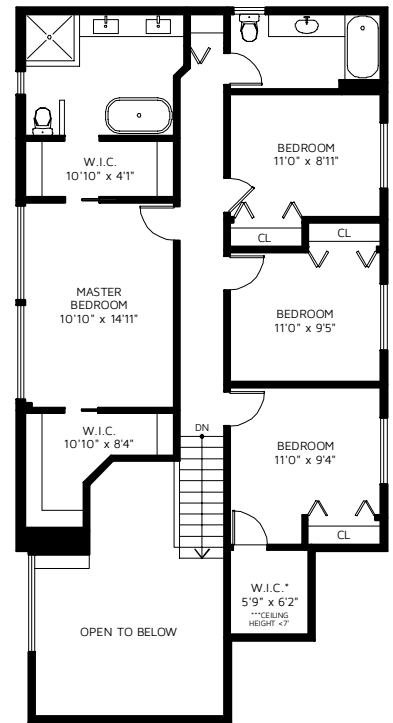
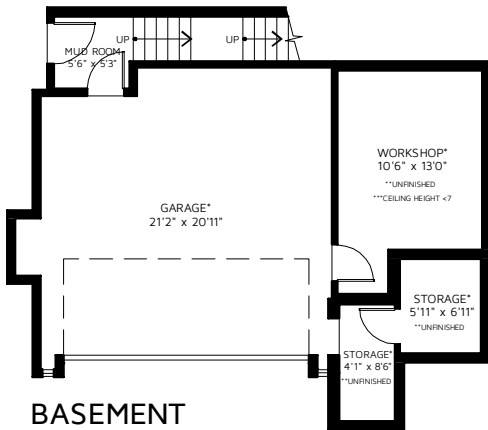


MAIN FLOOR



UPPER FLOOR



BASEMENT

5630 SUMAC PL,
NORTH VANCOUVER, V7R 4T6



UPPER FLOOR	1,033	SQ FT
MAIN FLOOR	2,316	SQ FT
BASEMENT	76	SQ FT
TOTAL FINISHED AREA	3,424	SQ FT

W.I.C.*	43	SQ FT
PORCH*	93	SQ FT
DECK*	144	SQ FT
GARAGE*	479	SQ FT
WORKSHOP*	176	SQ FT
STORAGE*	95	SQ FT

*NOT INCLUDED IN OVERALL SQUARE FOOTAGE