

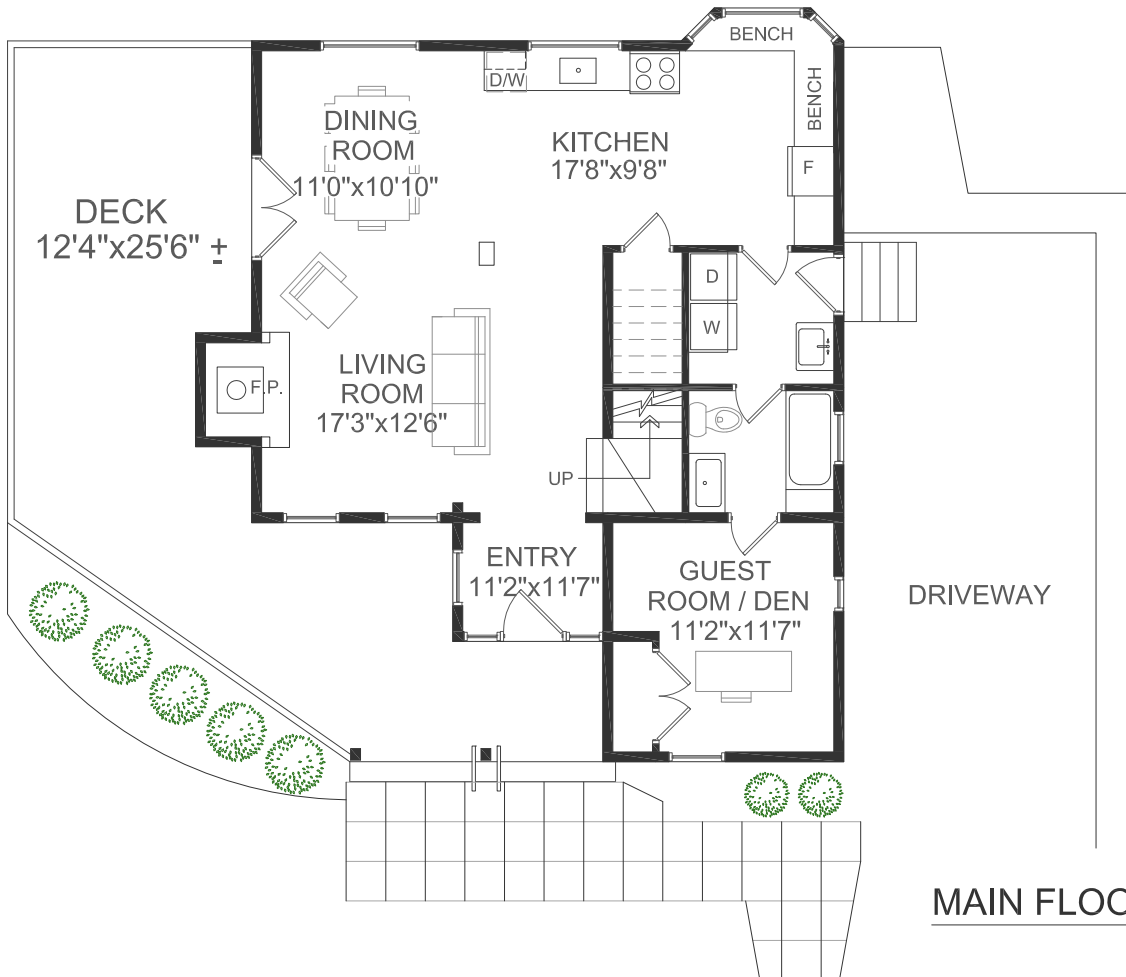
597 Willies Way

Bowen Island, BC

MAIN FLOOR	943 SQ.FT.
UPPER FLOOR	721 SQ.FT.
TOTAL FLOOR AREA	1,664 SQ.FT.

PLUS
 CRAWL SPACE STORAGE 947 SQ.FT.
 (LOWER HEIGHT CEILING)

SECOND FLOOR



MAIN FLOOR

Room dimensions are approximate and should not be relied upon without independent verification. Measurements are approximate and for presentation purposes only. www.realestatefloorplansolutions.com

