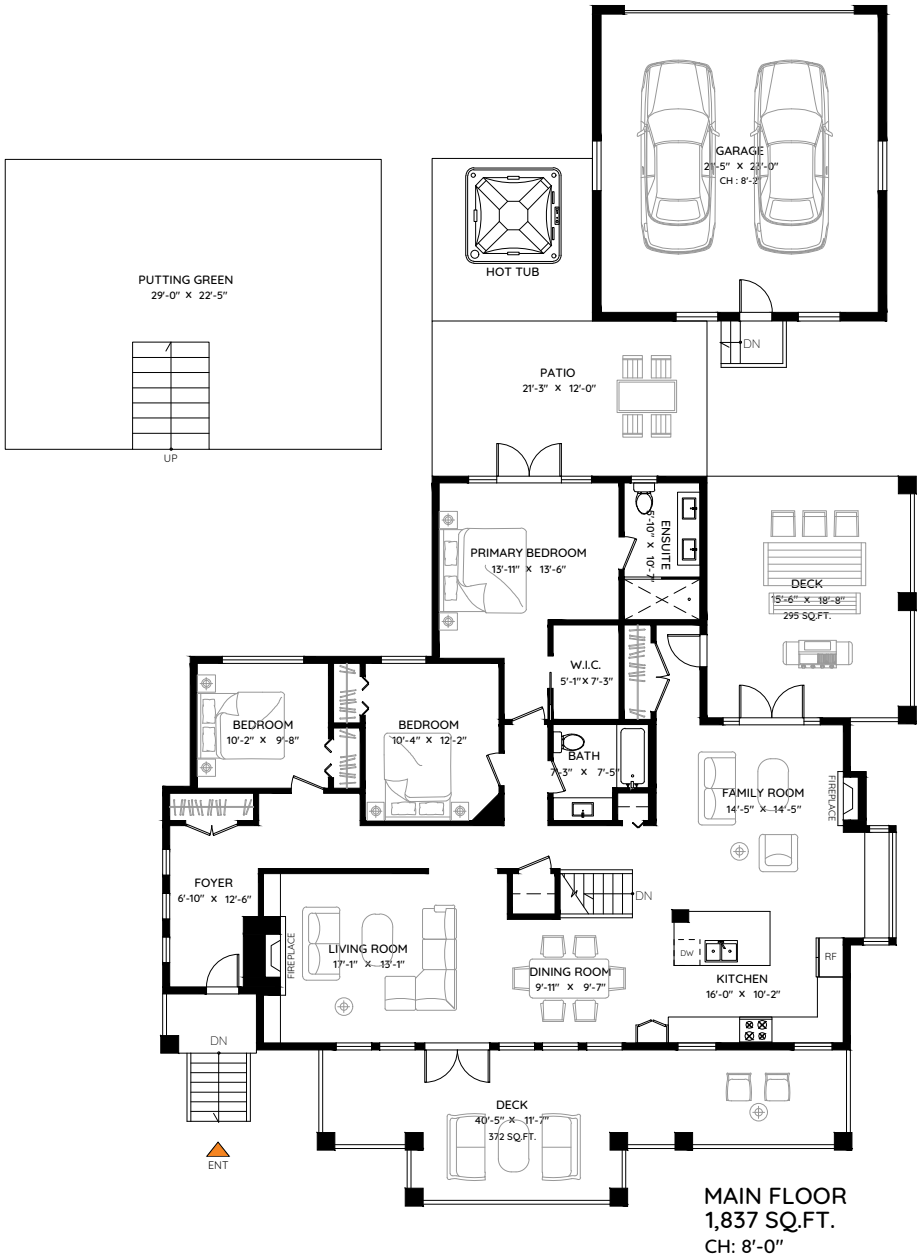


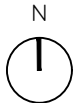
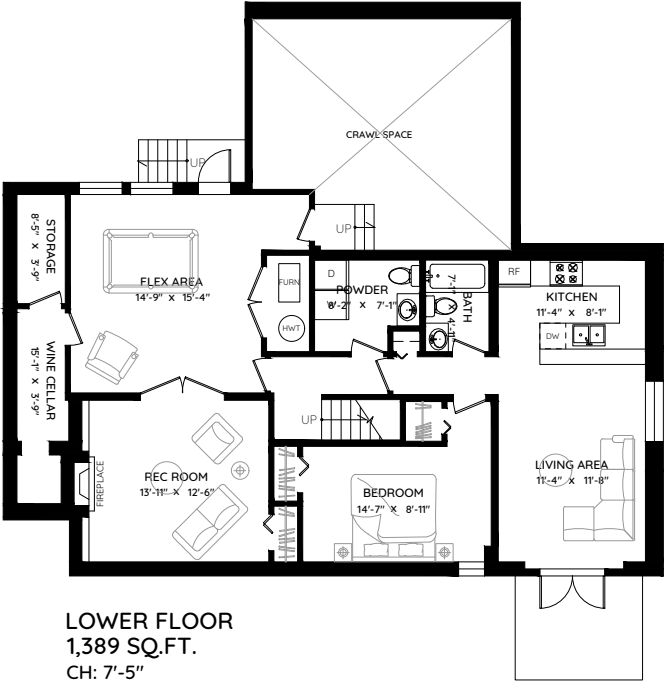
1425 PALMERSTON AVENUE  
WEST VANCOUVER, BC

Sotheby's  
INTERNATIONAL REALTY  
Canada

Jason Jennings  
604 833 8080  
jasonjennings@sothebysrealty.ca



MAIN	1,837 SQ.FT.	GARAGE	553 SQ.FT.
LOWER	1,389 SQ.FT.	DECK	667 SQ.FT.
TOTAL	3,226 SQ.FT.	PATIO	409 SQ.FT.
		TOTAL	1,629 SQ.FT.



0 ft 3 ft 5 ft 10 ft

The floor plan and measurements are approximate, typically within +/- 2%. These are intended strictly for advertising purposes.  
They may encompass unfinished areas and are not intended for architectural or construction applications.  
There may be variances in the numbers if there were restrictions on property access or if taking precise measurements at the time of measuring isn't feasible. E&O insured.

