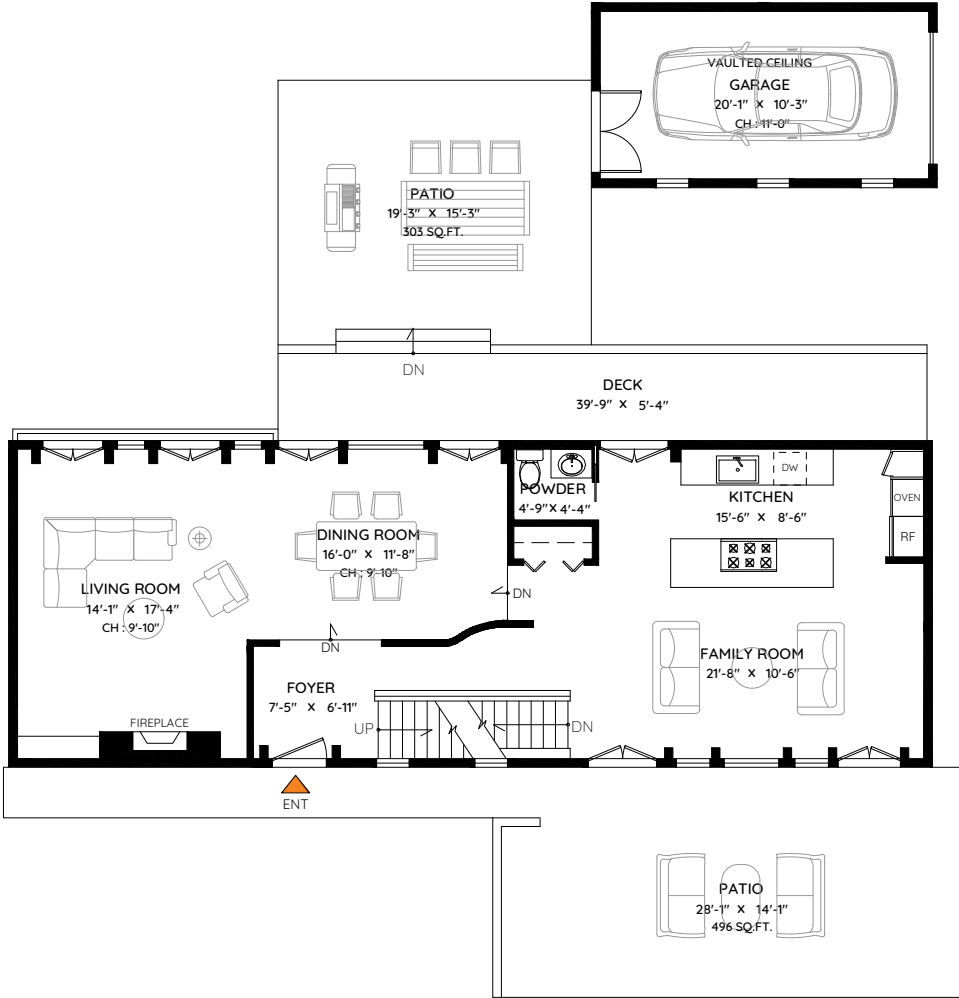


955 20TH STREET
WEST VANCOUVER, BC

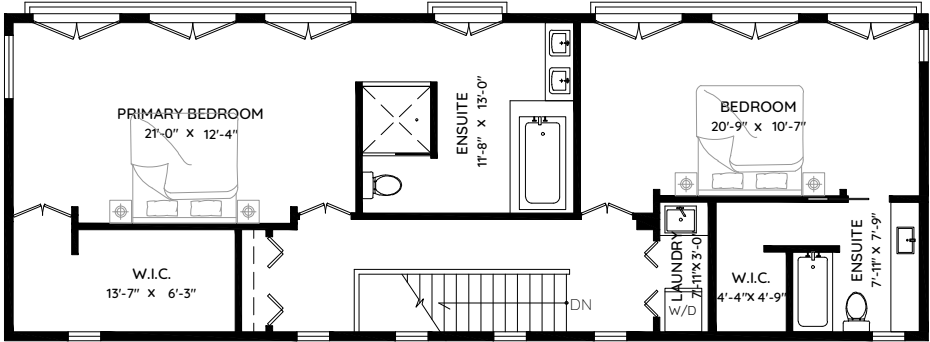
MAIN	1,135 SQ.FT.	GARAGE	240 SQ.FT.
UPPER	1,135 SQ.FT.	DECK	242 SQ.FT.
LOWER	725 SQ.FT.	PATIO	936 SQ.FT.
TOTAL	2,995 SQ.FT.	TOTAL	1,418 SQ.FT.

Sotheby's
INTERNATIONAL REALTY
Canada

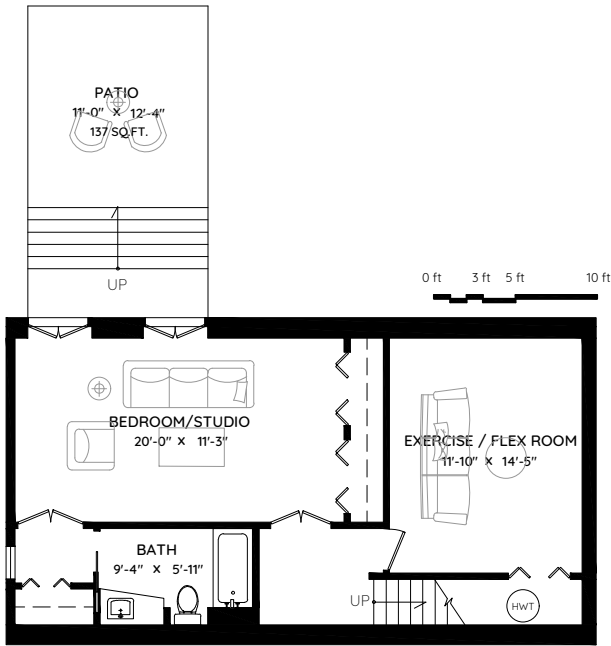
Jason Jennings
604 833 8080
jasonjennings@sothebysrealty.ca



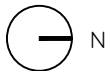
MAIN FLOOR
1,135 SQ.FT.
CH: 8'-1"



UPPER FLOOR
1,135 SQ.FT.
CH: 14'-0" (VAULTED)



LOWER FLOOR
725 SQ.FT.
CH: 8'-0"



The floor plan and measurements are approximate, typically within +/- 2%. These are intended strictly for advertising purposes. They may encompass unfinished areas and are not intended for architectural or construction applications. There may be variances in the numbers if there were restrictions on property access or if taking precise measurements at the time of measuring isn't feasible. E&O insured.

