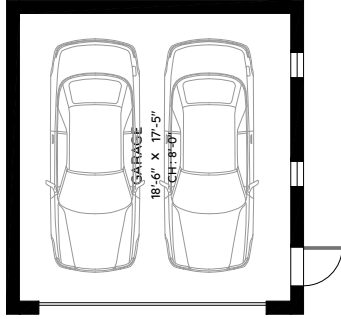


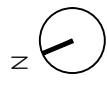
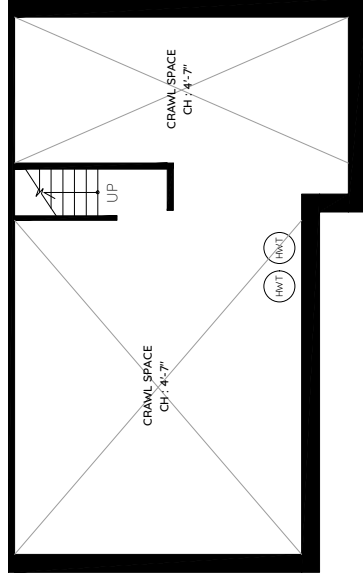
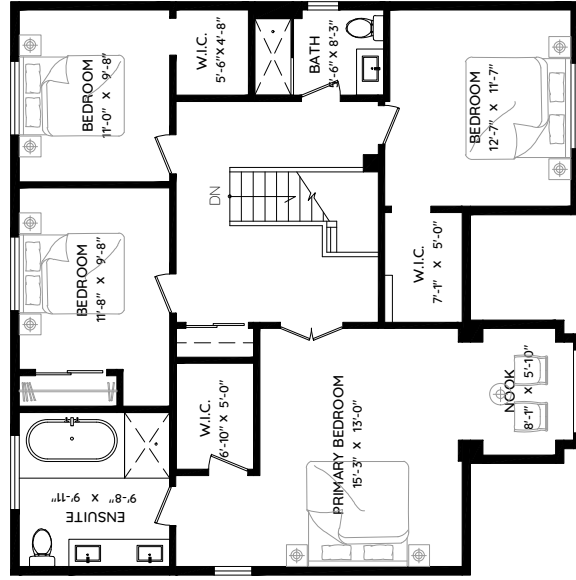
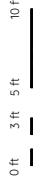
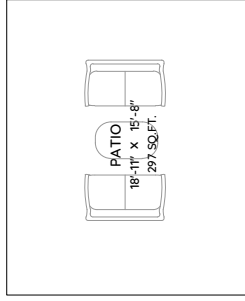
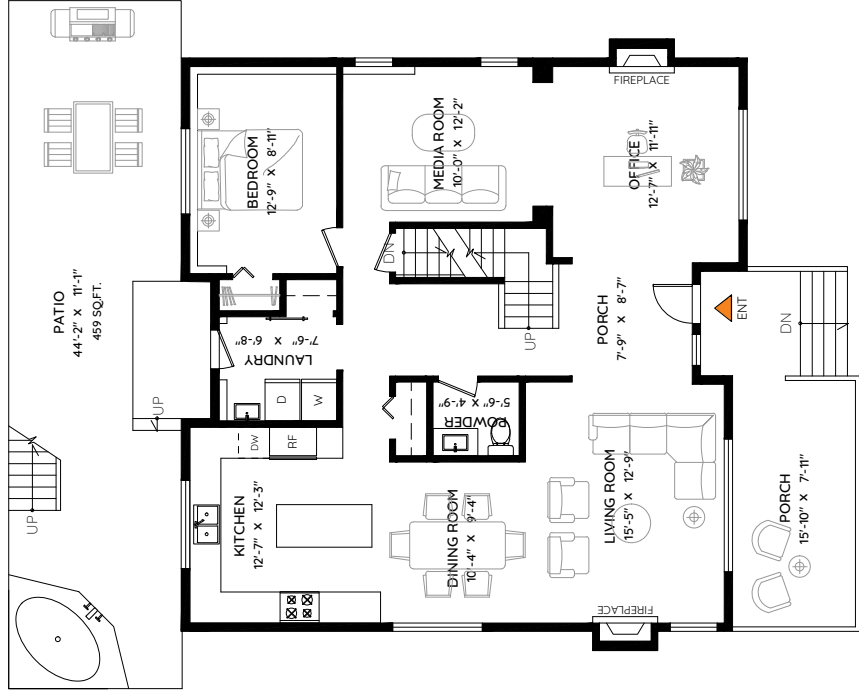
# 1075 ESPLANADE AVENUE WEST VANCOUVER, BC

**Sotheby's**  
INTERNATIONAL REALTY  
Canada

**Jason Jennings**  
604 833 8080  
jasonjennings@sothebysrealty.ca



MAIN	1,300 SQ.FT.	GARAGE	384 SQ.FT.
UPPER	1,265 SQ.FT.	PORCH	199 SQ.FT.
<b>TOTAL</b>	<b>2,565 SQ.FT.</b>	<b>PATIO</b>	<b>756 SQ.FT.</b>
		<b>TOTAL</b>	<b>1,339 SQ.FT.</b>



The floor plan and measurements are approximate, typically within +/- 2%. These are intended strictly for advertising purposes. They may encompass unfinished areas and are not intended for architectural or construction applications. There may be variances in the numbers if there were restrictions on property access or if taking precise measurements at the time of measuring isn't feasible. ESO insured.

