

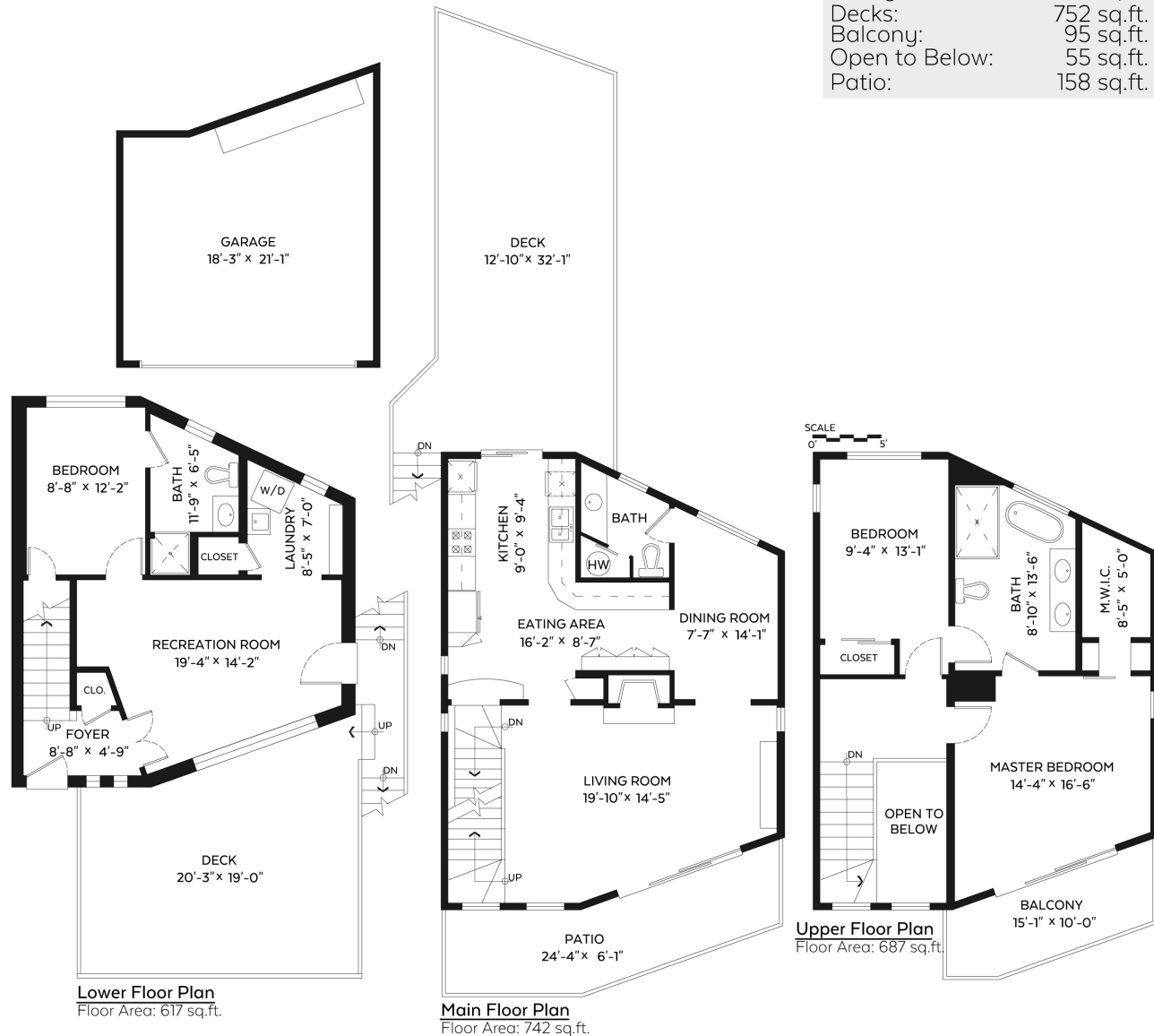
# Feature Sheet

2727 Panorama Drive, North Vancouver  
3 beds, 3 baths - House/Single Family

**JW. JASON WEINMAN**  
PERSONAL REAL ESTATE CORPORATION  
778.242.4933      jw@jasonweinman.com  
Sutton Grp-West Coast Realty      www.jasonweinman.com

2727 Panorama Drive,  
North Vancouver, B.C.  
Main Floor: 742 sq.ft.  
Upper Floor: 687 sq.ft.  
Lower Floor: 617 sq.ft.  
**Total: 2,046 sq.ft.**

**Auxiliary Area**  
Garage: 367 sq.ft.  
Decks: 752 sq.ft.  
Balcony: 95 sq.ft.  
Open to Below: 55 sq.ft.  
Patio: 158 sq.ft.



# Jason Weinman

Sutton Group - West Coast Realty

778-242-4933  
jw@jasonweinman.com  
<http://www.jasonweinman.com>



Measured on: August 5, 2016  
The floor plan is not suitable for architectural/construction, square footaae-method ANSI Z765 used & is covered under E&O





# Feature Sheet

2727 Panorama Drive, North Vancouver  
3 beds, 3 baths - House/Single Family



Spectacular WATER VIEWS from this charming home in sought after DEEP COVE! This family home has been substantially renovated and oozes relaxation and warmth with 3 bedrooms, including master with a private balcony with water views and an exquisite ensuite sure to impress. Main floor has updated galley style kitchen, living/dining with white oak hardwood floors, cozy wood burning fireplace and an open plan an ideal spot for entertaining! Picture yourself on your large, sunny, view, filled balcony watching the kayaks & paddleboards in the Cove or imaging unwinding with privacy on your worry free Trex deck in the back. Complete with a 2 car garage. This home is Cove living at its finest! Walk to Cove, Quarry Rock, Schools, shops, cafes & transportation.

**Price:** \$1,798,000  
**Type:** House  
**Beds:** 3  
**Baths:** 3  
**Built:** 1977  
**Size:** 2,046 sqft  
**Lot:** 19,899 Sq.Ft.  
**Taxes:** \$6,504 (2016)

**Jason Weinman**  
Sutton Group - West Coast Realty

778-242-4933  
jw@jasonweinman.com  
<http://www.jasonweinman.com>

