



**JASON WEINMAN**  
PERSONAL REAL ESTATE CORPORATION



**8314 Rainbow Drive**  
Alpine Meadows | Whistler  
\$1,550,000



## About This Property

Welcome to this spectacular property located in one of Whistler's finest neighbourhoods, Alpine Meadows. The home features bright and spacious main rooms with open concept living, vaulted ceilings, cozy wood burning fireplace and comes with plenty of storage for all your seasonal toys and a double car garage. This 3200 sqft, 6 bedroom (all with ensuites) home would make a great investment or a perfect multi-family purchase. Current fixed term leases pay \$3400 up (to June 1, 2017) and \$1250 down (to July 1, 2017). Zoned TB1 for Bed and Breakfast! Conveniently located only 5 minutes from the village and close to the popular Valley Trail system, Whistler Secondary and Meadow Park Sports Centre. Call now for your private tour!

## Property Features

- Bedrooms:** 6
- Bathrooms:** 7
- Area:** 3,213 sqft
- Lot Size:** 8,751 sqft
- Taxes:** \$6,373.70
- Style:** 3 Storey
- Parking:** 2 Car Garage + 4
- Zoned:** TB1 (for B&B)





**8314 Rainbow Drive,  
Whistler, B.C.**

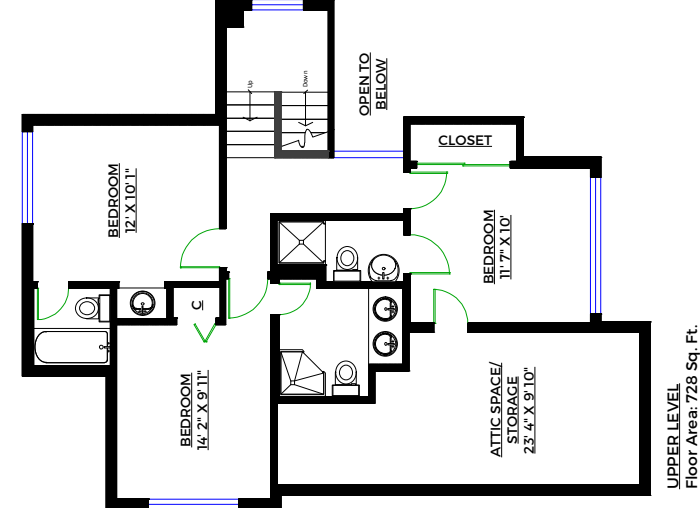
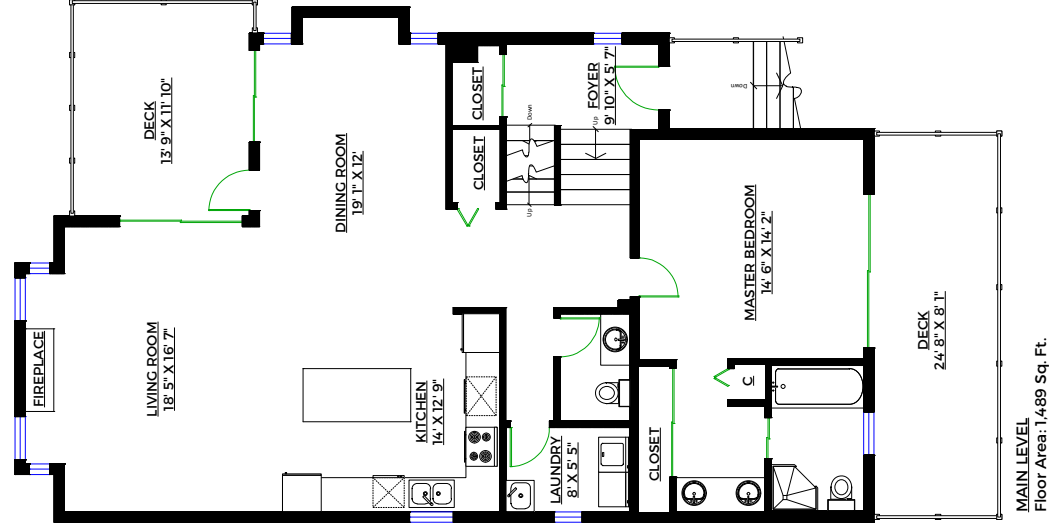
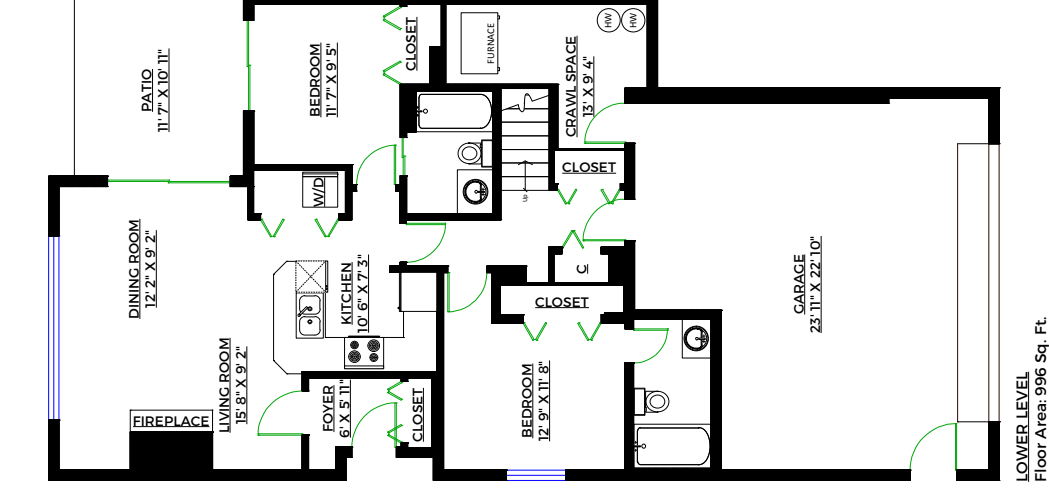
**Totals\*\***

Main Level: 1,489 sq. ft.  
Upper Level: 728 sq. ft.  
Lower Level: 996 sq. ft.  
Total: 3,213 sq. ft.

**Other Areas\*\***

Attic: 220 sq. ft.  
Crawl Space: 98 sq. ft.  
Garage: 530 sq. ft.  
Back Deck: 158 sq. ft.  
Front Patio: 126 sq. ft.  
Total: 1,331 sq. ft.

\*\* Approx. based on laser for measurements to center of walls  
\*\* Total square footage not taken from original blueprints





C 778 242 4933  
O 604 986 9321  
jw@jasonweinman.com  
www.jasonweinman.com



**WestCoast Realty™**  
You've found a home