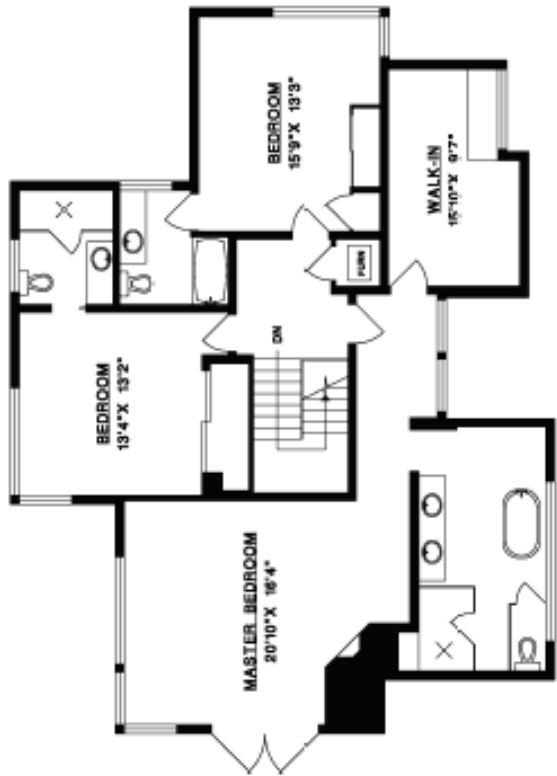
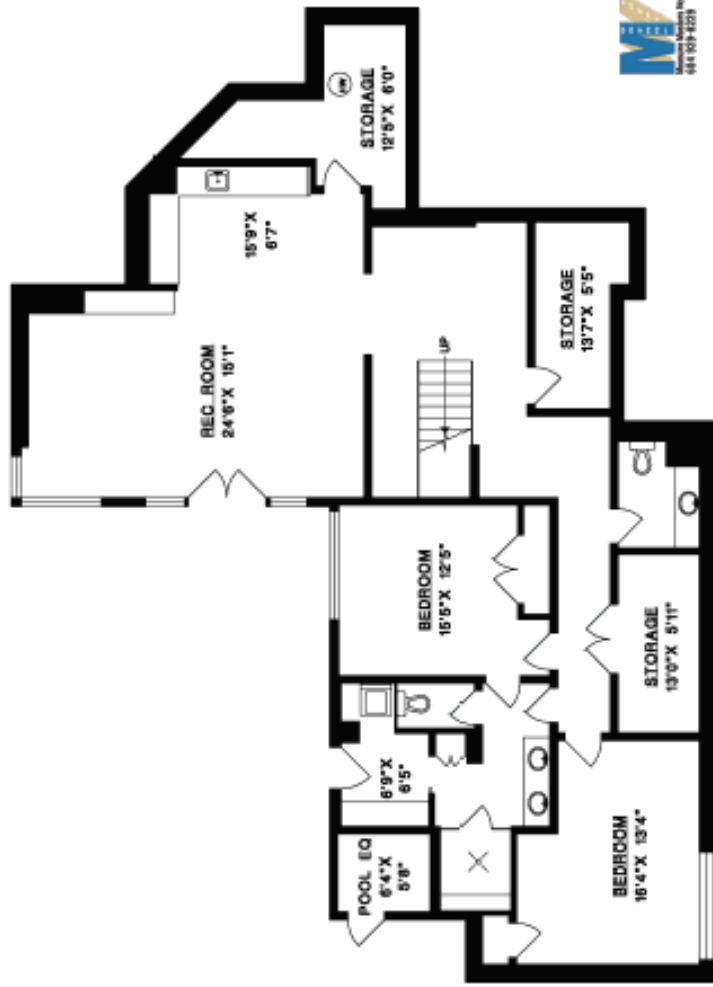


MAIN FLOOR



UPPER FLOOR



LOWER FLOOR



JOHN KARDOS
 425 WEST HOLME ROAD
 WEST VANCOUVER

MAIN FLOOR	2,155 SQ.FT.
UPPER FLOOR	1,604 SQ.FT.
LOWER FLOOR	2,123 SQ.FT.
TOTAL	5,882 SQ.FT.
GARAGE	520 SQ.FT.

