



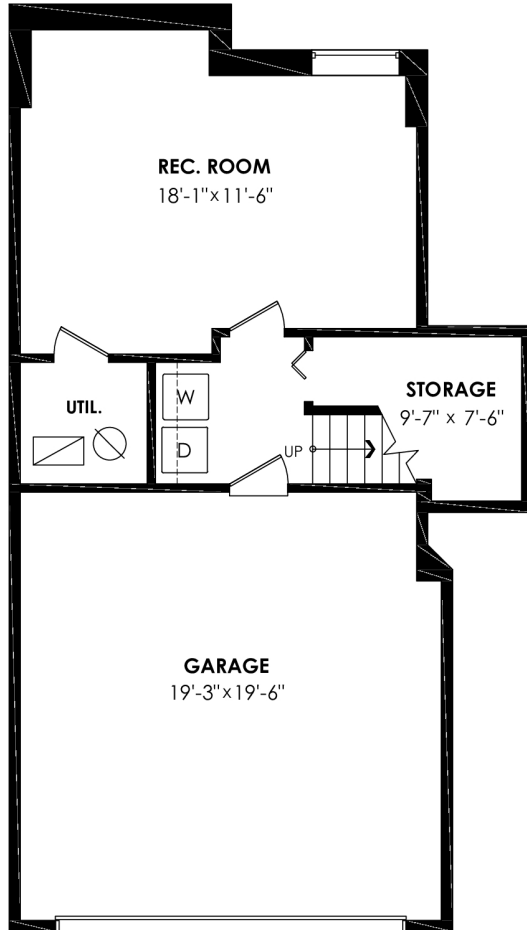
**John Kemp**  
 604-805-8557  
 john@johnkempshomes.ca  
 www.johnkempshomes.ca  
 Royal LePage Elite West

# 24-15 Forest Park Way, Port Moody

Lower Floor: 447 sq. ft.    Porch: 35 sq. ft.  
 Main Floor: 709 sq. ft.    Patio: 258 sq. ft.  
 Upper Floor: 709 sq. ft.    Balcony: 116 sq. ft.  
**Total Livable: 1,865 sq. ft.**    Garage: 401 sq. ft.  
**Total Extras: 810 sq. ft.**

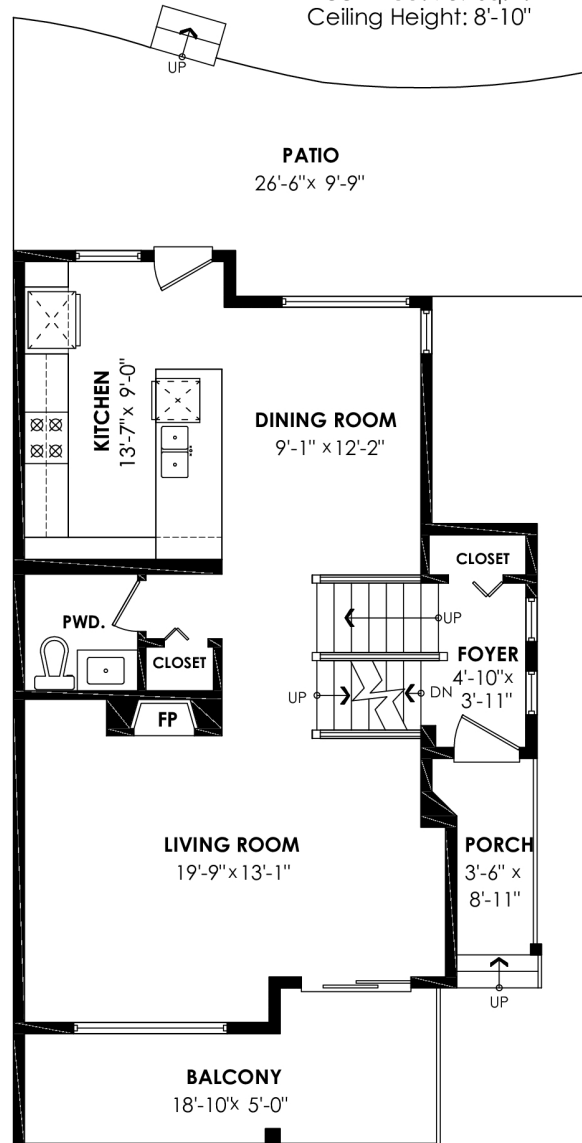
## Lower Floor Plan

Floor Area: 447 sq.ft.  
 Ceiling Height: 8'-6"



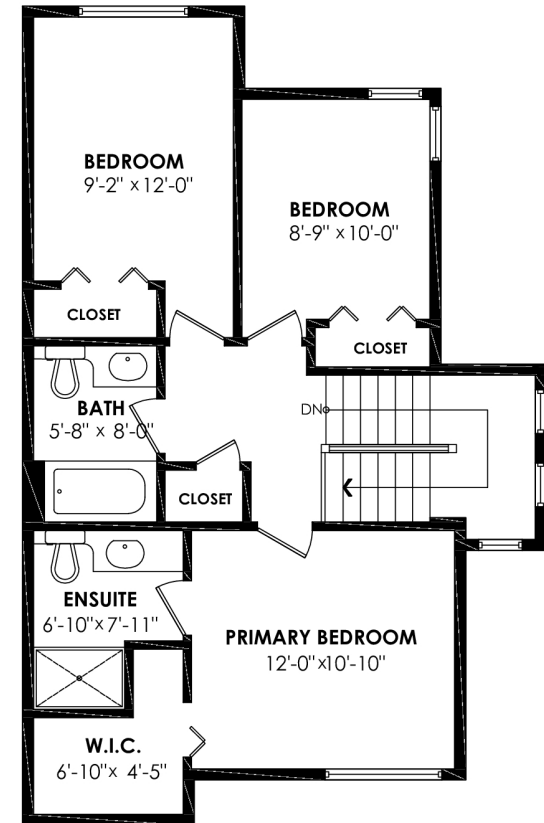
## Main Floor Plan

Floor Area: 709 sq.ft.  
 Ceiling Height: 8'-10"



## Upper Floor Plan

Floor Area: 709 sq.ft.  
 Ceiling Height: 7'-9"



E&O Insured. For advertising purposes only. Not intended for architectural or construction use. Floorplan and measurements are approximate within +/- 2% tolerance.

