

# JOHN KEMP

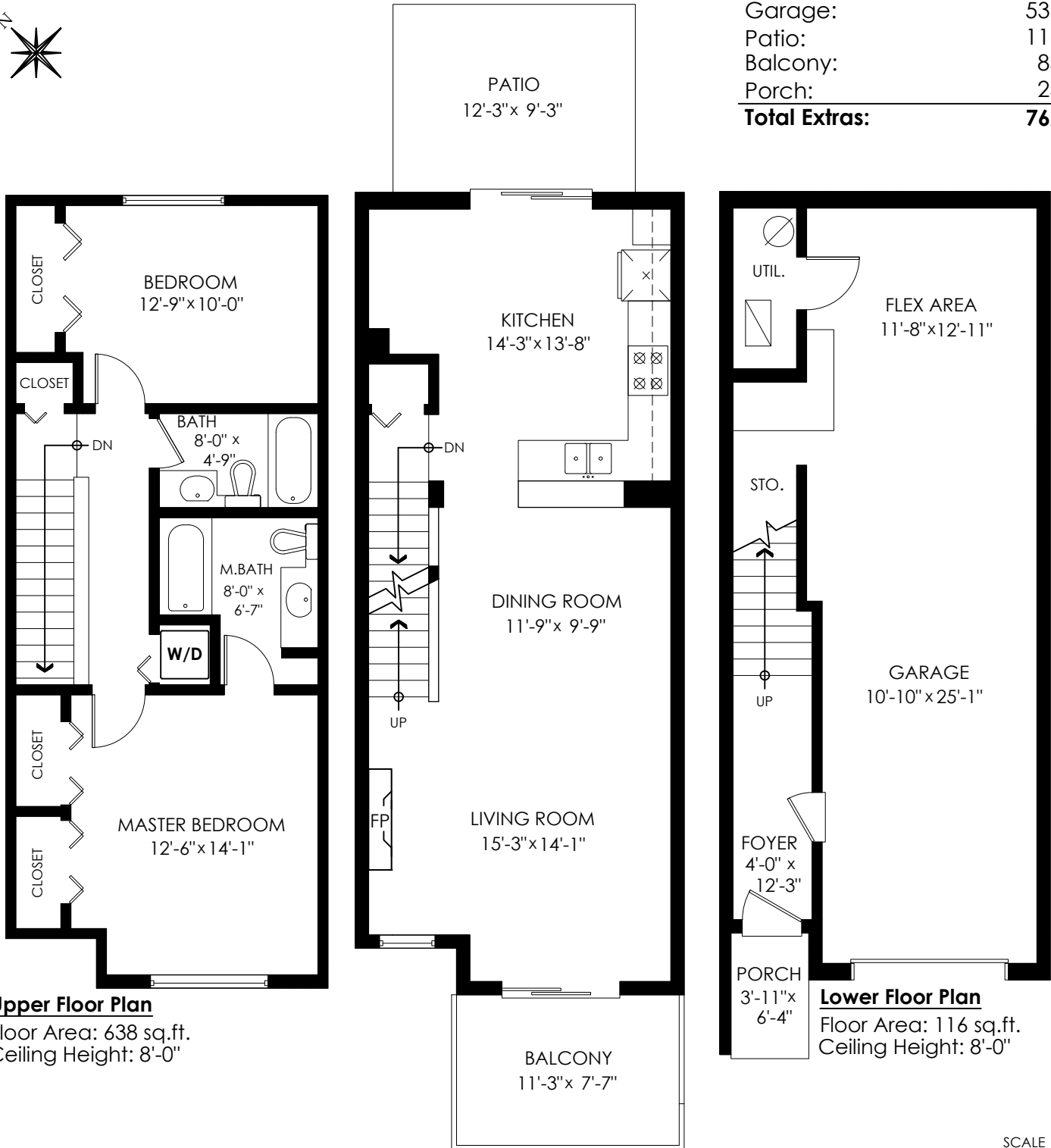
604-805-8557

JohnKempHomes.ca

**86-2200 Panorama Dr,  
Port Moody**

Main Floor:	659 sq.ft.
Upper Floor:	638 sq.ft.
Lower Floor:	116 sq.ft.
<b>Total:</b>	<b>1,413 sq.ft.</b>

Garage:	536 sq.ft.
Patio:	116 sq.ft.
Balcony:	85 sq.ft.
Porch:	25 sq.ft.
<b>Total Extras:</b>	<b>762 sq.ft.</b>



**Upper Floor Plan**

Floor Area: 638 sq.ft.  
Ceiling Height: 8'-0"

**Main Floor Plan**

Floor Area: 659 sq.ft.  
Ceiling Height: 8'-10"

**Lower Floor Plan**

Floor Area: 116 sq.ft.  
Ceiling Height: 8'-0"

