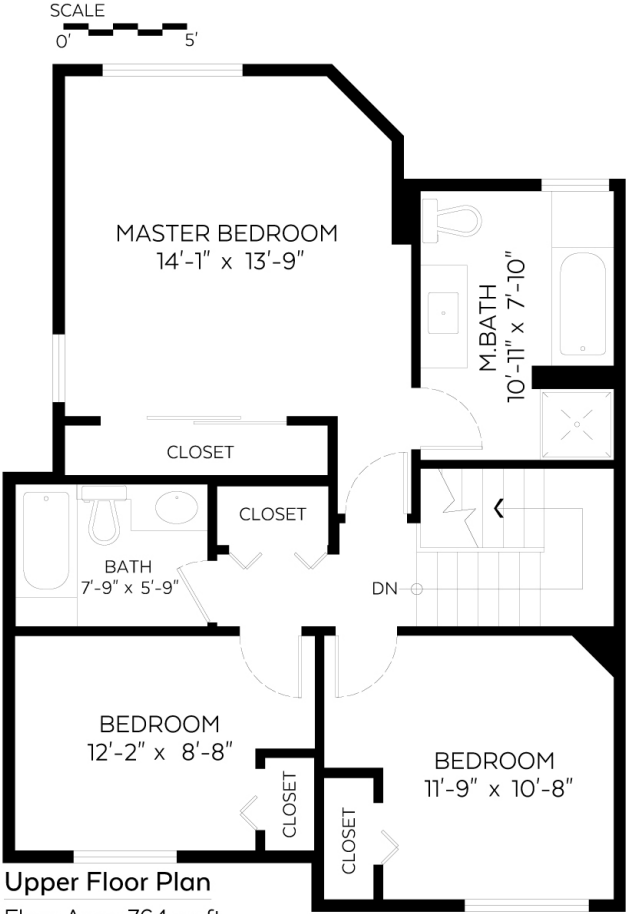


#35-1216 Johnson Street,  
Coquitlam, B.C.

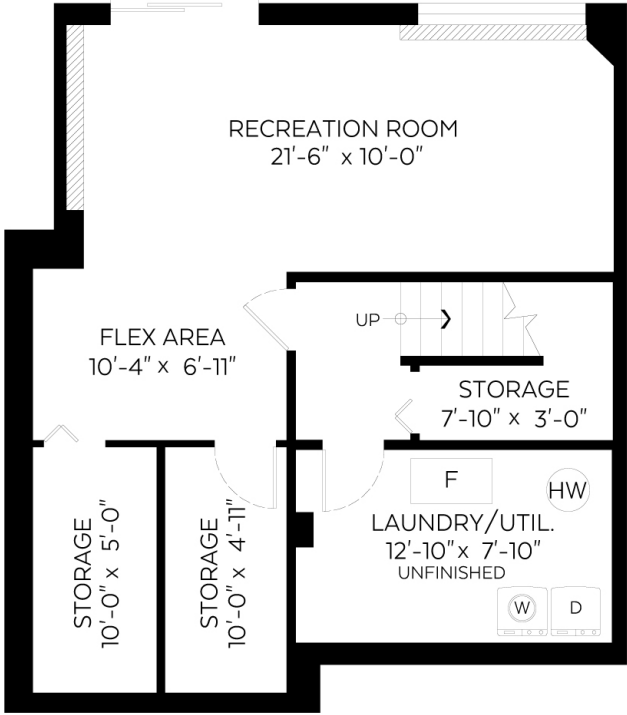
Main Floor:	756 sq.ft.
Upper Floor:	764 sq.ft.
Fin. Lower Floor:	568 sq.ft.
<b>Total:</b>	<b>2,088 sq.ft.</b>
Unfin. Lower Floor:	116 sq.ft.
<b>Grand Total:</b>	<b>2,204 sq.ft.</b>



Upper Floor Plan  
Floor Area: 764 sq.ft.



Main Floor Plan  
Floor Area: 756 sq.ft.



Lower Floor Plan  
Fin. Floor Area: 568 sq.ft.  
Unfin. Floor Area: 116 sq.ft.



Measured on: Sep. 28, 2018

The floor plan is not suitable for architectural/construction and is covered under E&O. © Excelsior Measuring Inc. 2018. All rights reserved for Excelsior Measuring Inc. Users shall not publish and distribute such material (in whole or in part) and/or incorporate it in other works in any form.



NORTH