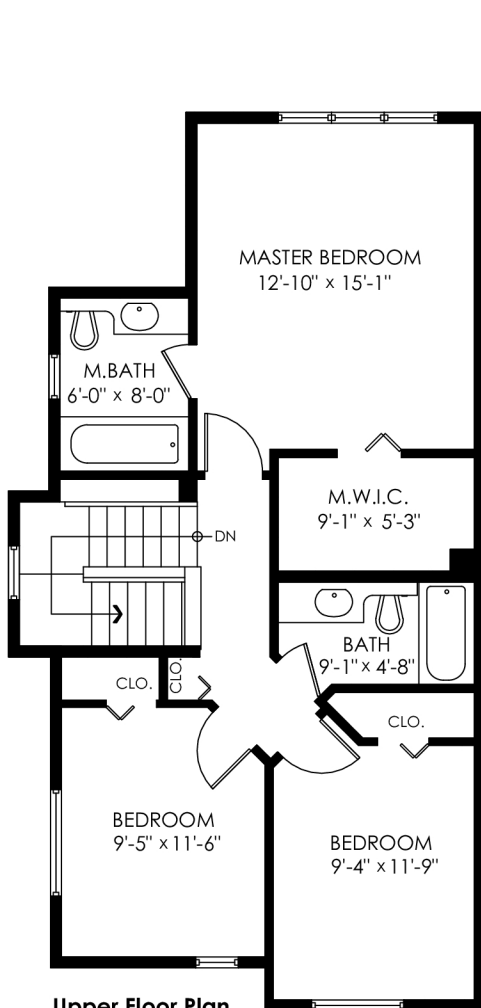


# 99-2200 Panorama Dr, Port Moody

Main Floor: 815 sq.ft.  
Upper Floor: 779 sq.ft.  
Lower Floor: 404 sq.ft.  
**Total Livable: 1,998 sq.ft.**

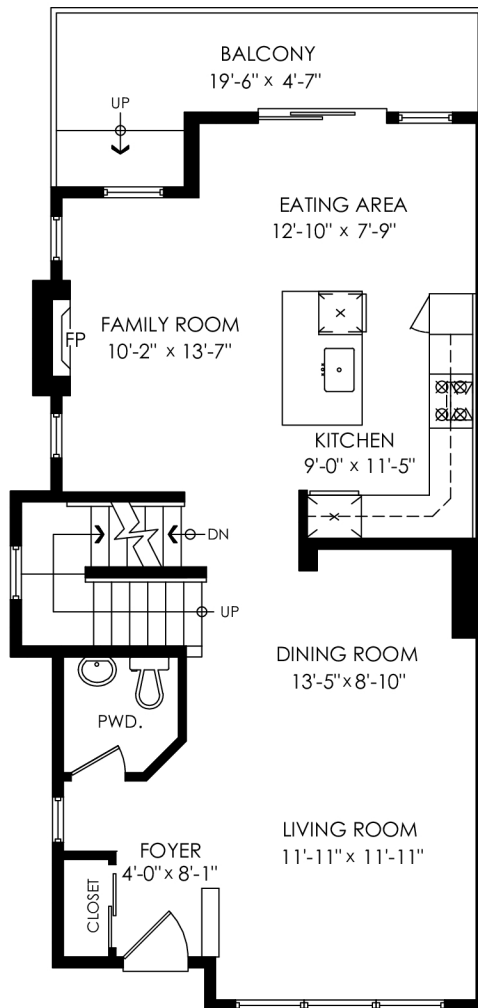
Garage: 387 sq.ft.  
**Grand Total: 2,385 sq.ft.**

Balcony: 110 sq.ft.



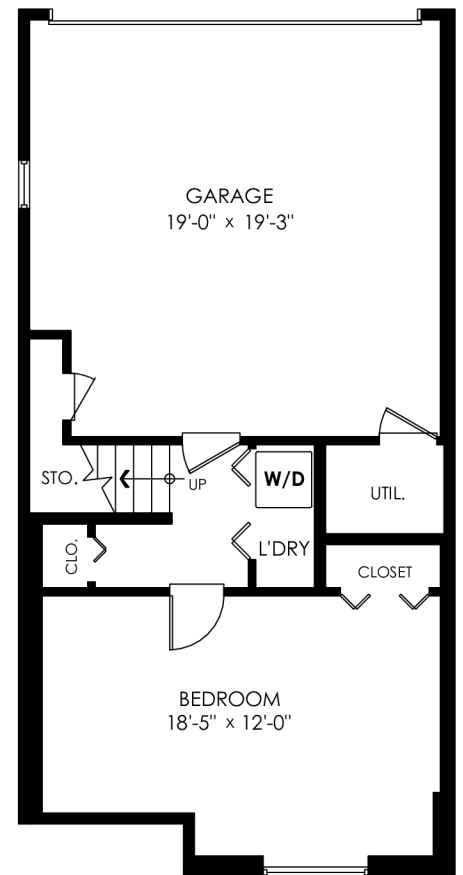
**Upper Floor Plan**

Floor Area: 779 sq.ft.  
Ceiling Height: 7'-11"



**Main Floor Plan**

Floor Area: 815 sq.ft.  
Ceiling Height: 8'-10"



**Lower Floor Plan**

Floor Area: 404 sq.ft.  
Ceiling Height: 8'



MEASURED ON: (2022-05-18)

info@pixlworks.com www.pixlworks.com 604.329.5788

