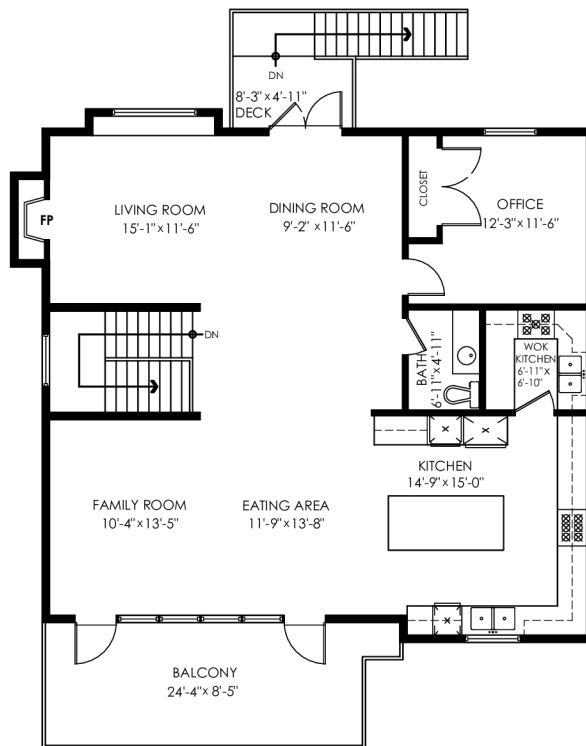


296 N Gamma Ave Burnaby

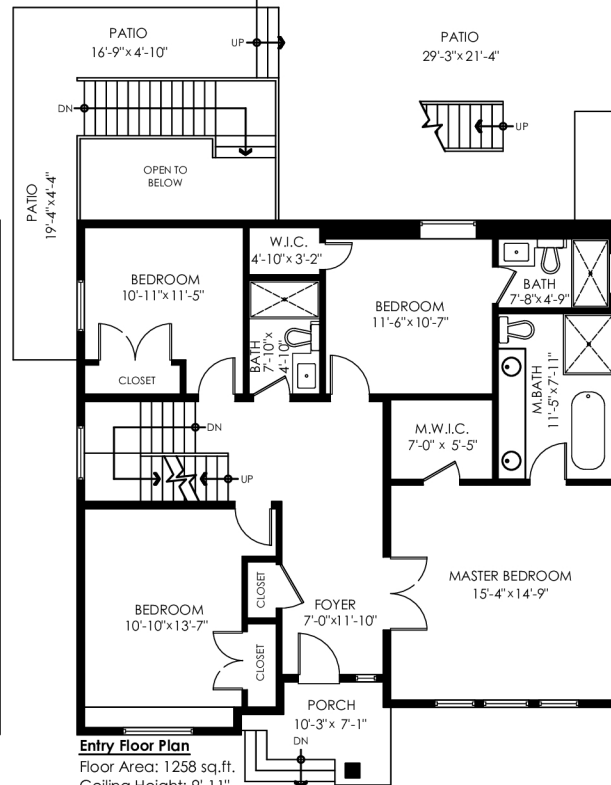
Main Floor: 1,301 sq.ft.
Entry Floor: 1,258 sq.ft.
Lower Floor: 1,020 sq.ft.
Total Livable: 3,579 sq.ft.

Crawl Space: 222 sq.ft.
Grand Total: 3,801 sq.ft.

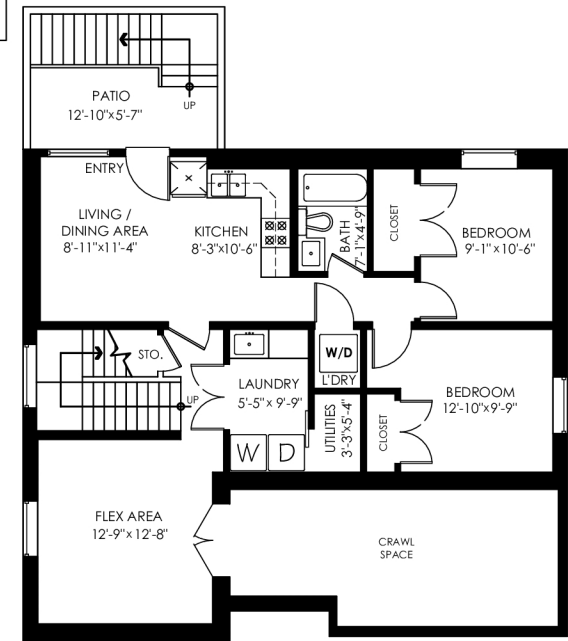
Detached Garage: 440 sq.ft.
Patios: 786 sq.ft.
Deck: 40 sq.ft.
Balcony: 189 sq.ft.
Porch: 50 sq.ft.
Total Extras: 1,505 sq.ft.



Main Floor Plan
Floor Area: 1301 sq.ft.
Ceiling Height: 9'-11"



Entry Floor Plan
Floor Area: 1258 sq.ft.
Ceiling Height: 9'-11"



Lower Floor Plan
Floor Area: 1020 sq.ft.
Ceiling Height: 7'-11"

