

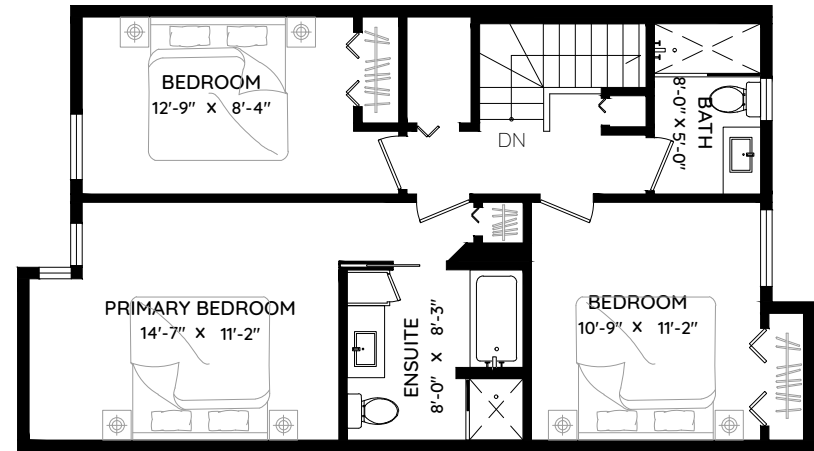
11 3350 ROSEMONT DRIVE

VANCOUVER, BC

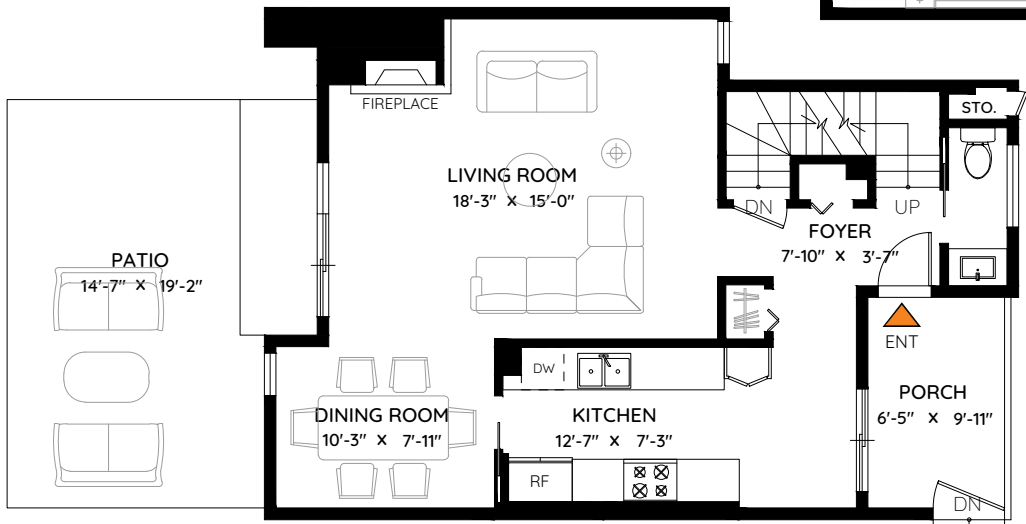
| | |
|--------------|---------------------|
| MAIN | 689 SQ.FT. |
| UPPER | 727 SQ.FT. |
| LOWER | 695 SQ.FT. |
| TOTAL | 2,111 SQ.FT. |
| PATIO | 260 SQ.FT. |
| STORAGE | 6 SQ.FT. |



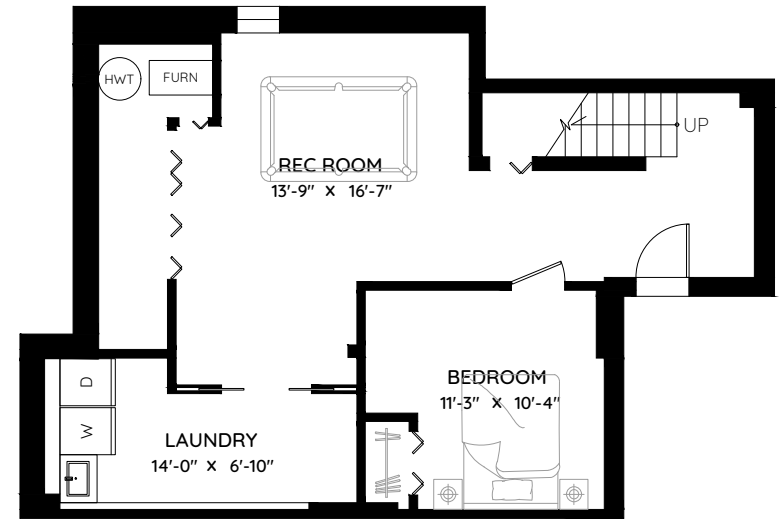
* Personal Real Estate Corporation
778-319-2672 **RE/MAX**



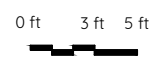
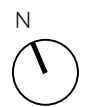
UPPER FLOOR
727 SQ.FT.
CH: 8'-0"



MAIN FLOOR
689 SQ.FT.
CH: 8'-0"



LOWER FLOOR
695 SQ.FT.
CH: 8'-0"



The floor plan and measurements are approximate, typically within +/- 2%. These are intended strictly for advertising purposes. They may encompass unfinished areas and are not intended for architectural or construction applications. There may be variances in the numbers if there were restrictions on property access or if taking precise measurements at the time of measuring isn't feasible. E&O insured.

