

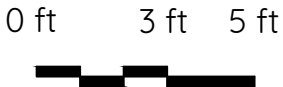
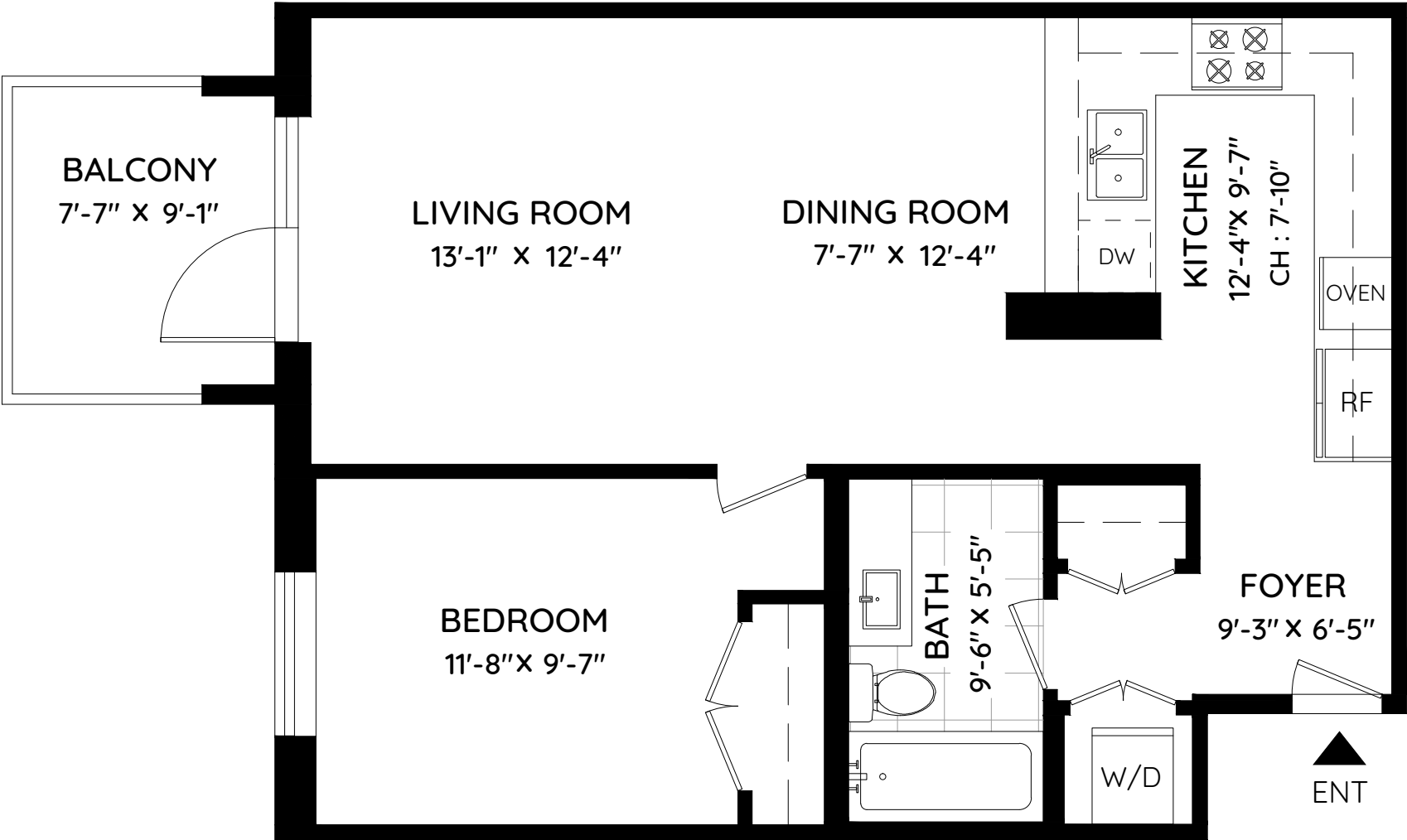
306 - 2780 VALLEY CENTER AVENUE

NORTH VANCOUVER, BC

LIVING AREA	721 SQ.FT.
BALCONY	66 SQ.FT.
CEILING HEIGHT	8'-7"



778-319-2672
JordanBosa.com



The floor plan and the measurements are approximate and are to be used for advertising usage only. Not suitable for architectural or construction. E&O Insured

