

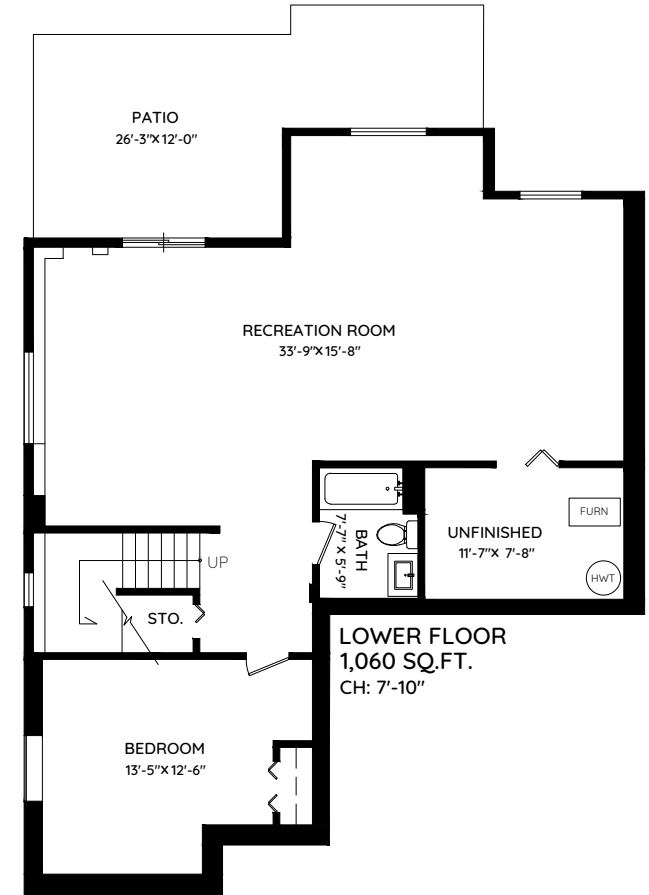
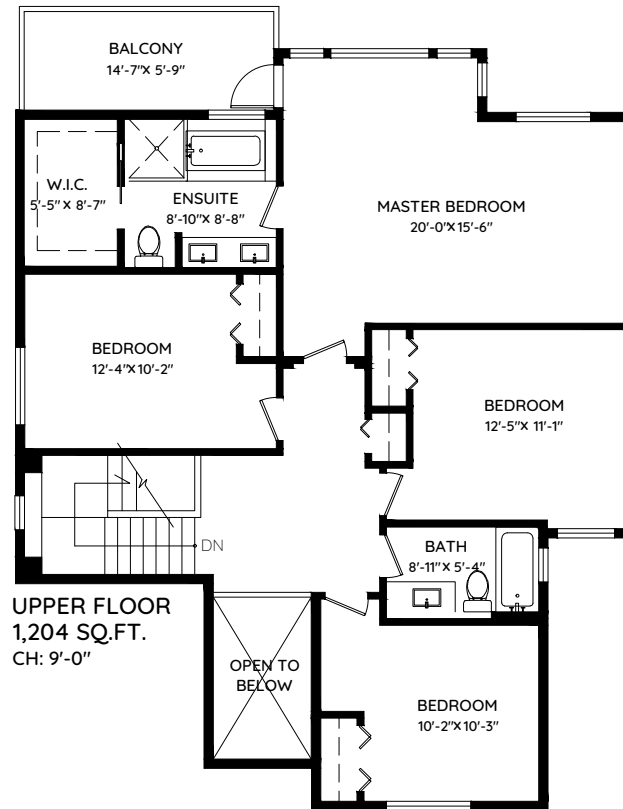
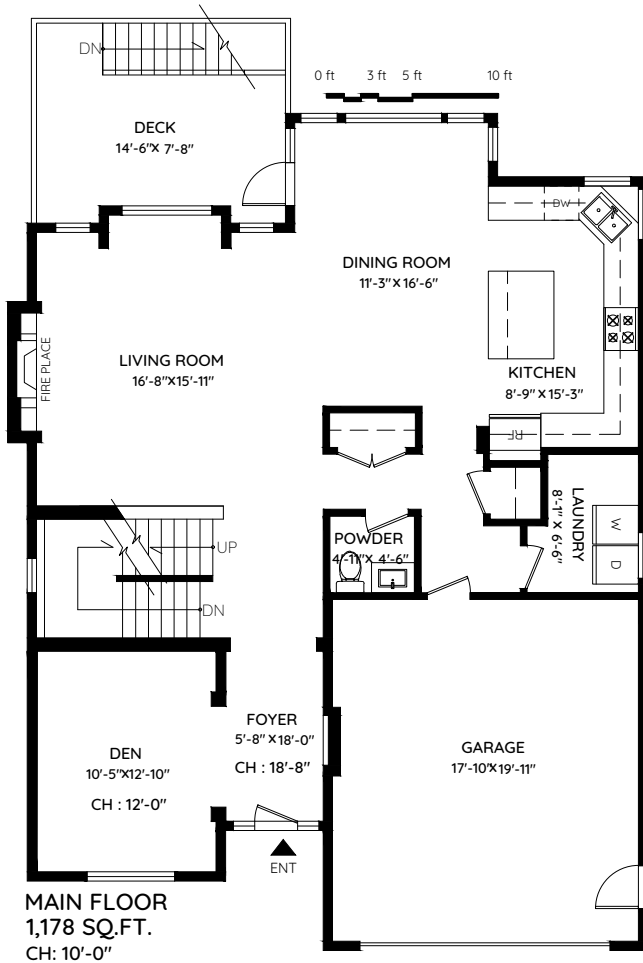
3474 STEPHENS COURT

COQUITLAM, BC

MAIN	1,178 SQ.FT.	GARAGE	379 SQ.FT.
UPPER	1,204 SQ.FT.	DECK	137 SQ.FT.
LOWER	1,060 SQ.FT.	BALCONY	90 SQ.FT.
TOTAL	3,442 SQ.FT.	PATIO	254 SQ.FT.
UNFINISHED	109 SQ.FT.	TOTAL	860 SQ.FT.
TOTAL AREA	3,551 SQ.FT.		

SISI LU & JOSE RIVERA

joserivera.ca | SISI 778 378 8909
JOSE 604 805 3191



The floor plan and the measurements are approximate and are to be used for advertising usage only. Not suitable for architectural or construction. E&OE. © 2019 KEYPLAN Measuring Inc.