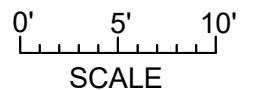
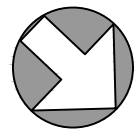


NORTH



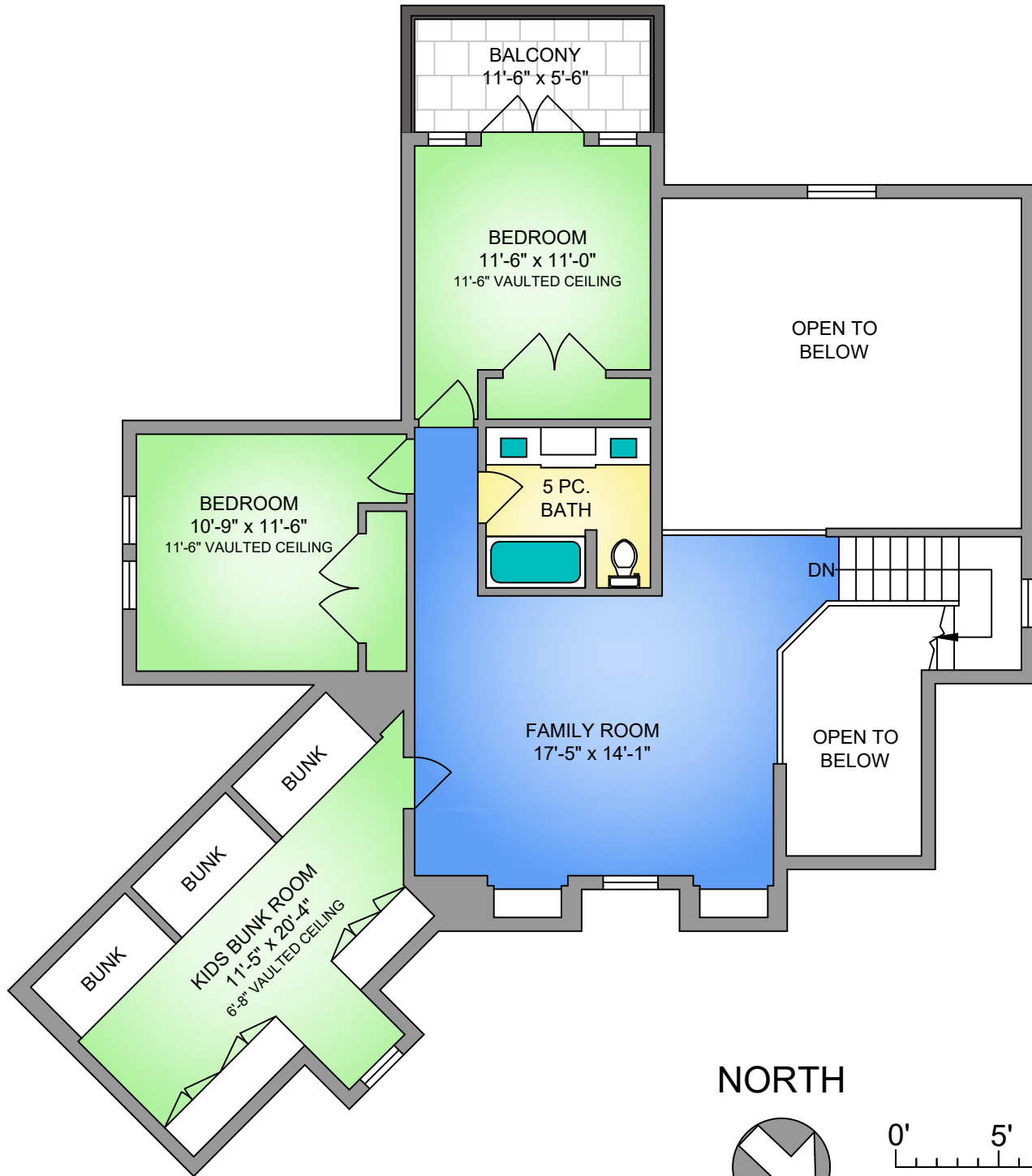
JULIA ABRAHAM
 Victoria Real Estate



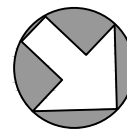
250-884-9753
 matt@propermeasure.com
 www.propermeasure.com

2053 PINHURST TERRACE DECEMBER 9, 2022			
PREPARED FOR THE EXCLUSIVE USE OF JULIA ABRAHAM PLANS MAY NOT BE 100% ACCURATE, IF CRITICAL BUYER TO VERIFY.			
FLOOR	AREA (SQ. FT.)		
	FINISHED	GARAGE	BALC. / PATIO
MAIN	1652	450	800
UPPER	1113	-	63
TOTAL	2765	450	863

UPPER FLOOR
1113 SQ. FT.
9' CEILING HEIGHT



NORTH



SCALE



JULIA ABRAHAM
 Victoria Real Estate



250-884-9753
 matt@propermeasure.com
 www.propermeasure.com

2053 PINEHURST TERRACE			
DECEMBER 9, 2022			
PREPARED FOR THE EXCLUSIVE USE OF JULIA ABRAHAM			
PLANS MAY NOT BE 100% ACCURATE, IF CRITICAL BUYER TO VERIFY.			
FLOOR	AREA (SQ. FT.)		
	FINISHED	GARAGE	BALC. / PATIO
MAIN	1652	450	800
UPPER	1113	-	63
TOTAL	2765	450	863