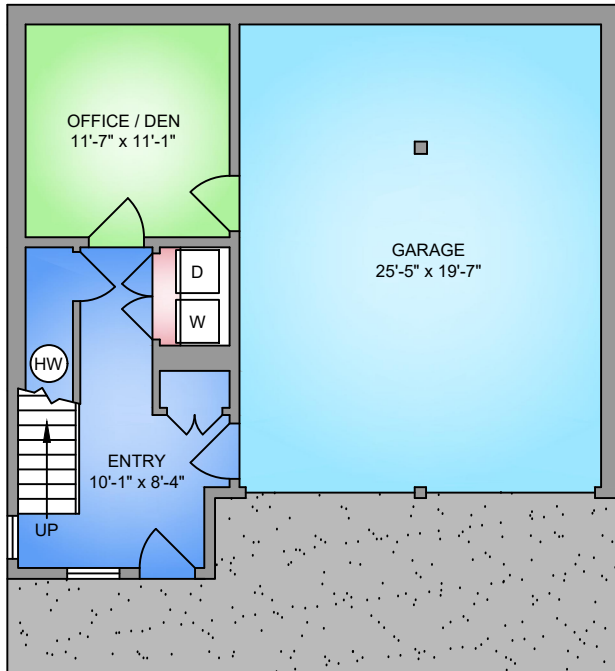
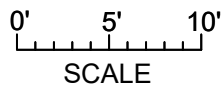


FIRST FLOOR
365 SQ. FT.
 10' CEILING HEIGHT

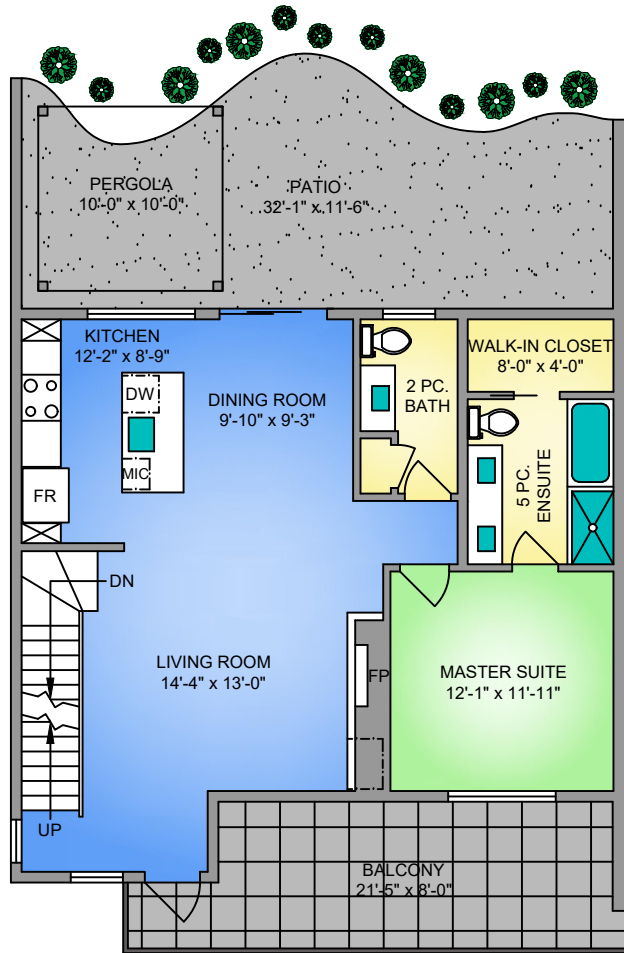


NORTH

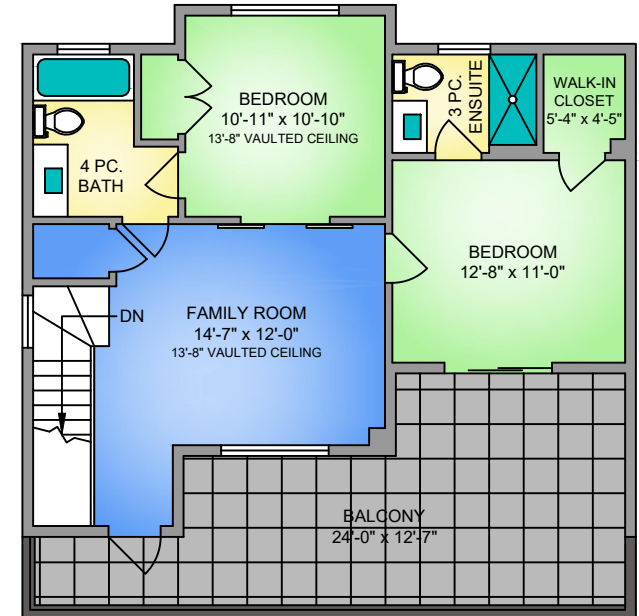


250-884-9753
 matt@propermeasure.com
 www.propermeasure.com

SECOND FLOOR
908 SQ. FT.
 9' CEILING HEIGHT



THIRD FLOOR
698 SQ. FT.
 9' CEILING HEIGHT



UNIT 116 - 1454 BEAR MOUNTAIN PARKWAY			
JANUARY 2, 2019			
PREPARED FOR THE EXCLUSIVE USE OF JULIA ABRAHAM			
PLANS MAY NOT BE 100% ACCURATE, IF CRITICAL BUYER TO VERIFY.			
FLOOR	AREA (SQ. FT.)		
	FINISHED	GARAGE	BALCONY / PATIO
FIRST	365	543	-
SECOND	908	-	544
THIRD	698	-	280
TOTAL	1971	543	824



JULIA ABRAHAM
 Victoria Real Estate