

# 1530 LIGHTHALL CRT NORTH VANCOUVER, BC

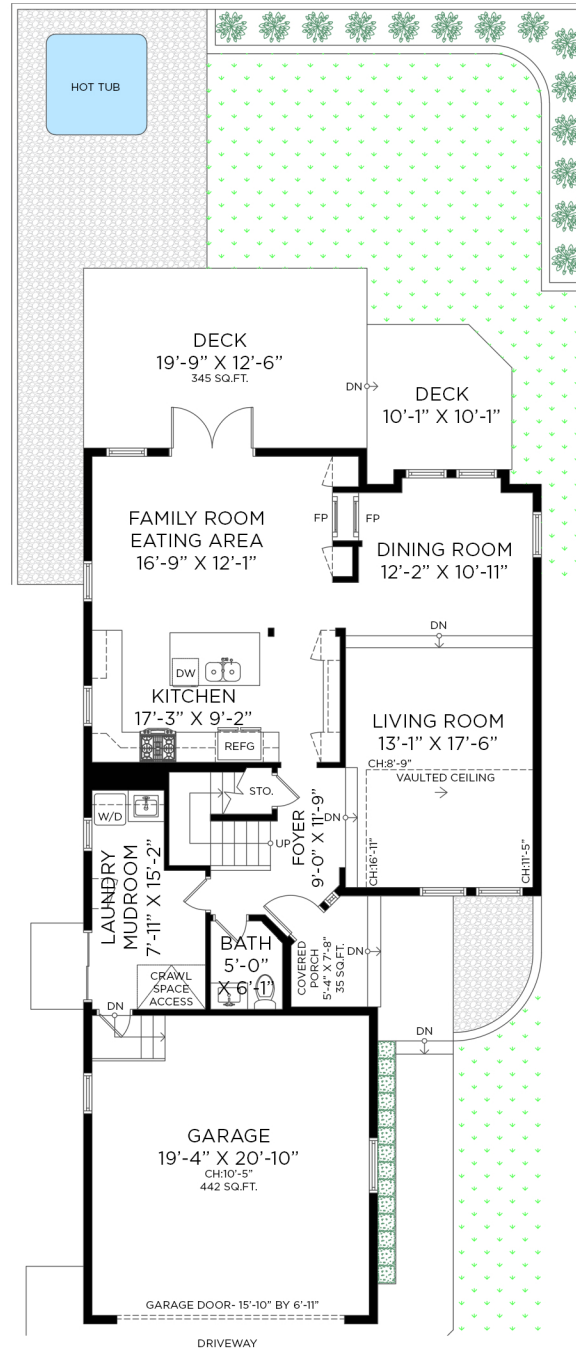
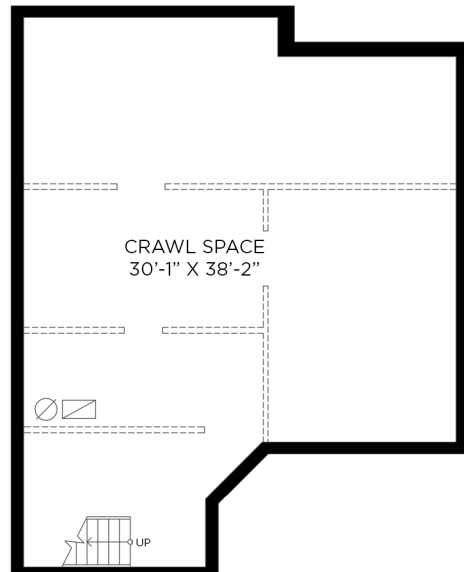
3 BEDROOMS + 2 1/2 BATHROOMS

MAIN FLOOR: 1,094 SQ.FT.  
UPPER FLOOR: 1,010 SQ.FT.  
**TOTAL INTERIOR: 2,104 SQ.FT.**

ATTACHED GARAGE: 442 SQ.FT.  
EXTERIOR LIVING: 412 SQ.FT.  
CRAWL SPACE: 1,086 SQ.FT.

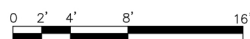
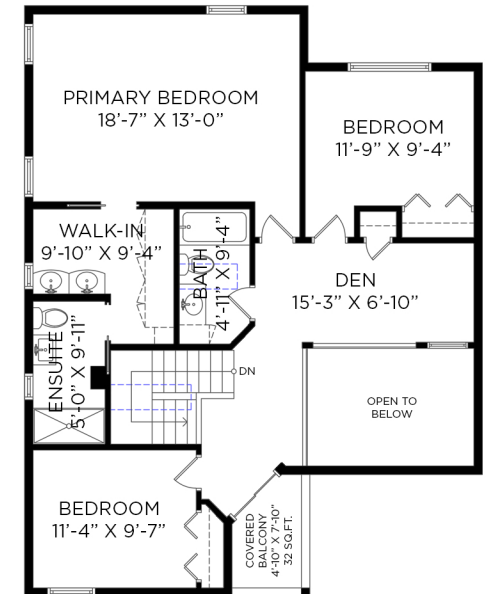
**MAIN FLOOR - 1,094 SQ.FT.**  
CEILING HEIGHT: 8'-0" TO 16'-11"

**CRAWL SPACE - 1,086 SQ.FT.**  
CEILING HEIGHT: 6'-4"



**ENTRANCE**

**UPPER FLOOR - 1,010 SQ.FT.**  
CEILING HEIGHT: 8'-0"



Floor plan not suitable for architectural/construction purposes. ANSI Z765 standards used to calculate square footage. Buyer to verify. E&O insured for \$1,000,000.