

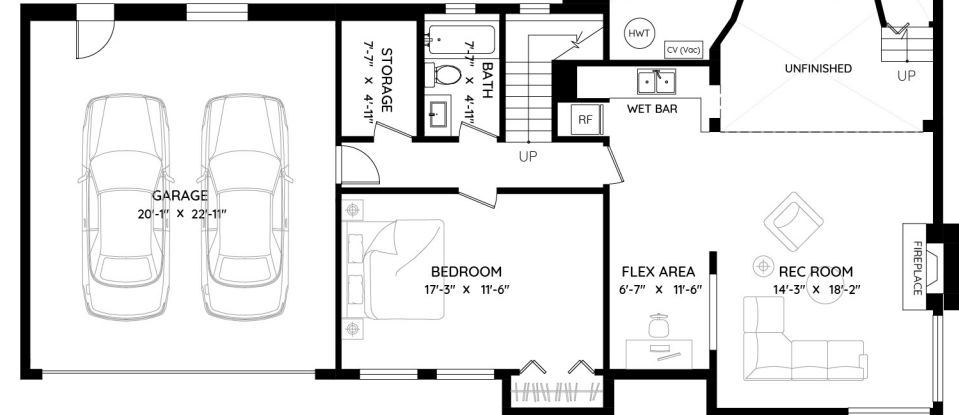
4724 WOODBURN COURT

WEST VANCOUVER, BC



MAIN	2,225 SQ.FT.
LOWER	894 SQ.FT.
TOTAL	3,119 SQ.FT.
GARAGE	512 SQ.FT.
DECK	641 SQ.FT.
TOTAL	1,153 SQ.FT.

LOWER FLOOR
894 SQ.FT.
CH: 8'-0"



0 ft 3 ft 5 ft 10 ft

The floor plan and measurements are approximate, typically within +/- 2%. These are intended strictly for advertising purposes. They may encompass unfinished areas and are not intended for architectural or construction applications. There may be variances in the numbers if there were restrictions on property access or if taking precise measurements at the time of measuring isn't feasible. E&O insured.