

Julie Miller

604.313.7605 julie@juliemillerhomes.com

www.juliemillerhomes.com

4366 Erwin Drive, West Vancouver

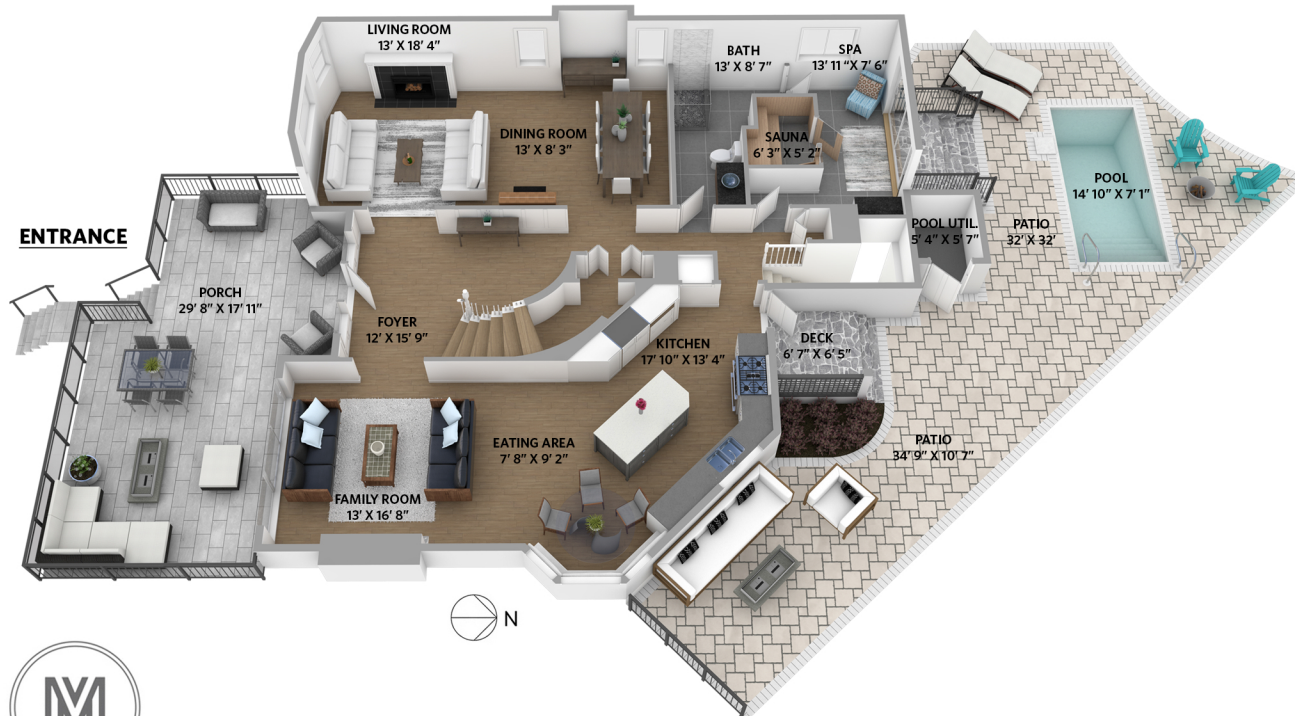
4 bedrooms + 4 bathrooms

Lower Floor: 972 sq.ft.
 Main Floor: 1,555 sq.ft.
 Upper Floor: 1,490 sq.ft.
Total Interior: 3,917 sq.ft.

Garage: 607 sq.ft.
 Total Exterior: 1,503 sq.ft.

Main Floor - 1,555 sq.ft.

Ceiling height - 8' 0" to 16' 9"



Upper Floor - 1,390 sq.ft.

Ceiling height - 8' 0"



Lower Floor - 972 sq.ft.

Ceiling height - 8' 0"

