

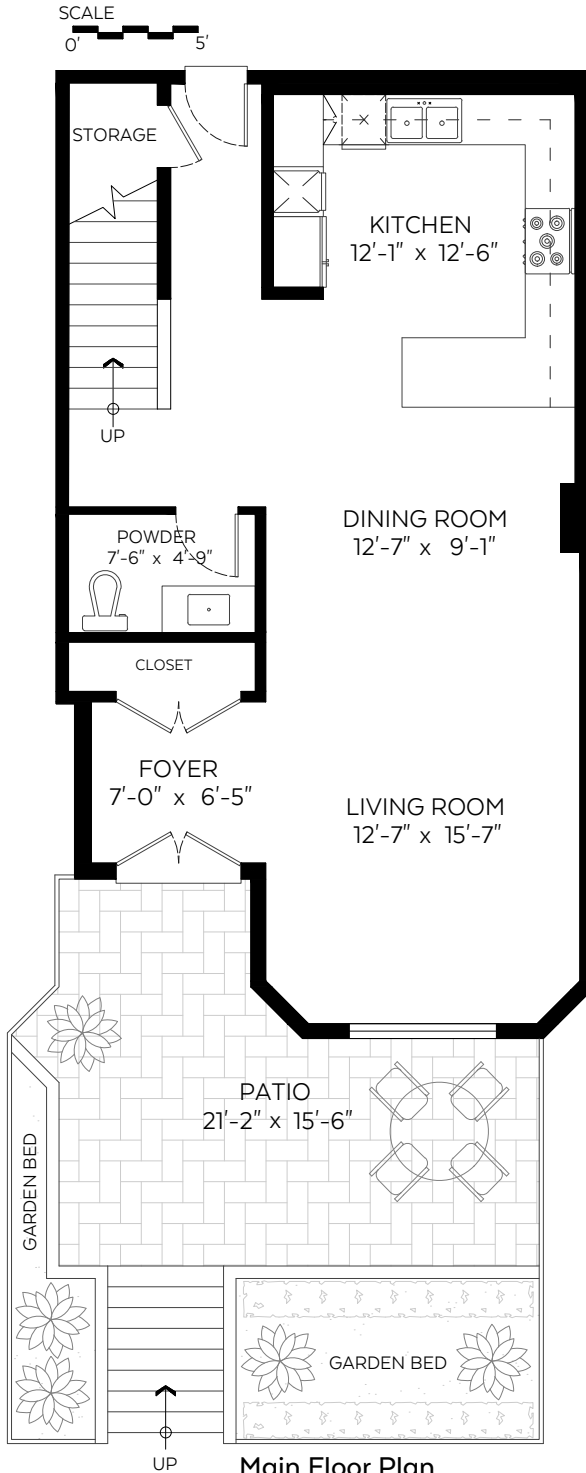


287 Smithe Street,
Vancouver, B.C.

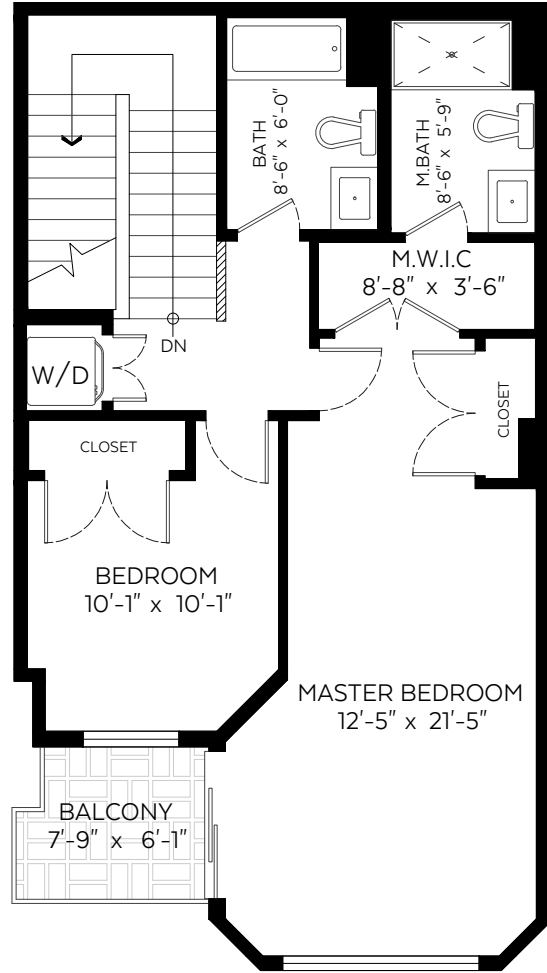
Main Floor:	773 sq.ft.
Upper Floor:	756 sq.ft.
Total:	1,529 sq.ft.

Auxiliary Area

Patio:	353 sq.ft.
Balcony:	44 sq.ft.



Main Floor Plan
Floor Area: 773 sq.ft.



Upper Floor Plan
Floor Area: 756 sq.ft.

Measured on: Aug. 20, 2018

The floor plan is not suitable for architectural/construction and is covered under E&O. © Excelsior Measuring Inc. 2018. All rights reserved for Excelsior Measuring Inc. Users shall not publish and distribute such material (in whole or in part) and/or incorporate it in other works in any form.



NORTH

