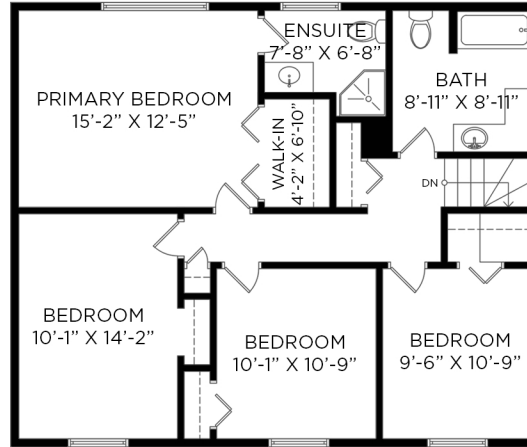




2510 BYRON ROAD NORTH VANCOUVER, BC

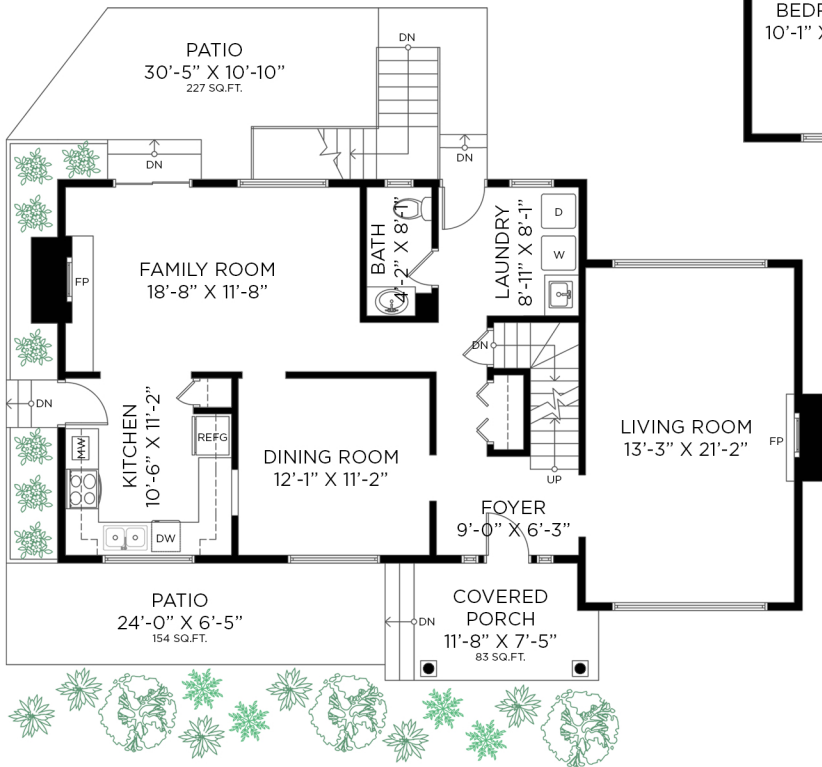
4 BEDROOMS + 2 1/2 BATHROOMS

UPPER FLOOR - 941 SQ.FT.
CEILING HEIGHT: 8'-0"

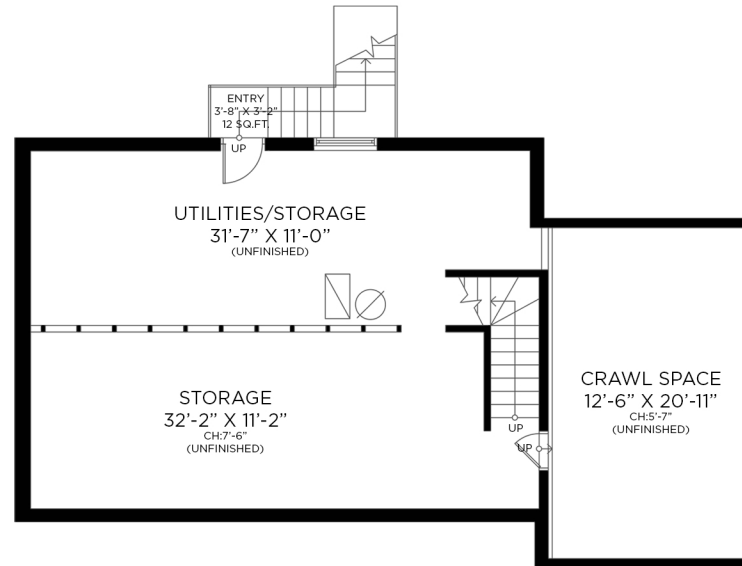


LOWER FLOOR: 817 SQ.FT.
MAIN FLOOR: 1,134 SQ.FT.
UPPER FLOOR: 941 SQ.FT.
TOTAL INTERIOR: 2,892 SQ.FT.

MAIN FLOOR - 1,134 SQ.FT.
CEILING HEIGHT: 8'-1"



LOWER FLOOR - 817 SQ.FT.
CEILING HEIGHT: 7'-6"



GARAGE - 622 SQ.FT.
CEILING HEIGHT: 10'-1"

