

166 Underhill Drive



LOT SIZE: 100 x 161 ft

BEDROOMS: 5 + 2

PARKING: Double car garage + 4 car parking

TAXES: \$6,141.74/2017

BATHROOMS: 2x5, 1x3, 1x2

POSSESSION: 30-60 days/tba

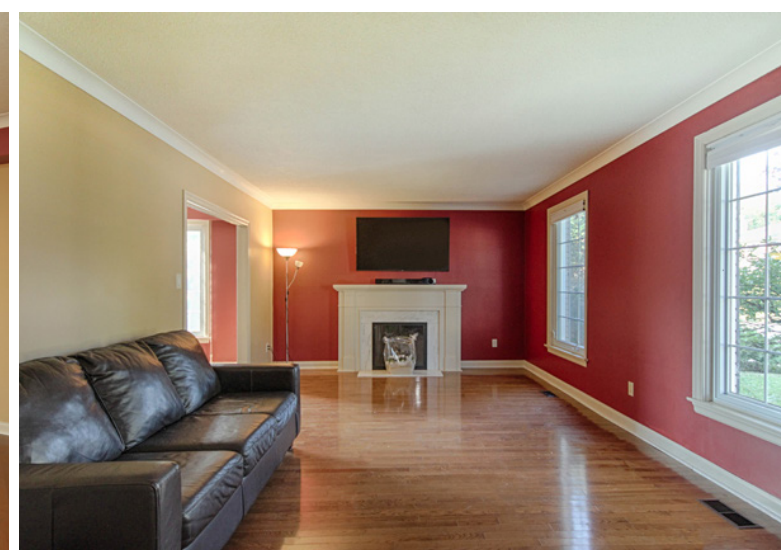
ROYAL LEPAGE Signature Realty
IND. OWNED & OPERATED BROKERAGE

Karen
MOLLARTEAM BROKER
EXCEEDING YOUR EXPECTATIONS



direct 416.390.2566 | office 416.443.0300 | fax 416.443.8619 | karen@karenmillar.com | karenmillarteam.com

Prospective purchasers should satisfy themselves as the accuracy of the information contained in this feature sheet. All measurements are approximate. The statements contained herein are based on sources which we believe are reliable, but for which we assume no responsibility.







SPECIAL FEATURES

- ◆ Main roof '07
- ◆ Garage roof '05
- ◆ Central air conditioning '12
- ◆ High-efficiency furnace '12
- ◆ 200 amp service '10
- ◆ All windows '07 (except one)
- ◆ Hardwood flooring '10
- ◆ Three fireplaces
- ◆ Second-floor laundry
- ◆ Two exterior doors '06 & '07
- ◆ One inch main water pipes
- ◆ Main floor family room
- ◆ Nanny/In-law suite potential

EXTERIOR

- ◆ Double car garage
 - Custom built-in storage closets/sheds
- ◆ Four car parking
- ◆ Two flagstone walkways

FOYER

- ◆ Hardwood flooring
- ◆ Slate flooring '10

LIVING ROOM

- ◆ Hardwood flooring
- ◆ Overlooks front garden
- ◆ Crown moulding
- ◆ Wood burning fireplace with marble & wood surround

DINING ROOM

- ◆ Large picture window
- ◆ Hardwood flooring '10
- ◆ Overlooks back garden

KITCHEN

- ◆ Ceramic tile flooring
- ◆ Breakfast bar with built in storage
- ◆ Ceramic tile backsplash
- ◆ Broom closet
- ◆ Under cabinet lighting
- ◆ Walk-in food pantry
- ◆ Stainless steel built-in Maytag dishwasher '16
- ◆ Stainless steel double Maytag oven '16
- ◆ Built-in GE microwave
- ◆ Stainless steel double door bottom mount Maytag fridge '16
- ◆ Overlooks deck
- ◆ Double stainless steel sink

2 PIECE POWDER ROOM

- ◆ Ceramic tile flooring

FAMILY ROOM

- ◆ Lots of natural sunlight
- ◆ Hardwood flooring
- ◆ Wood burning fireplace with brick surround
- ◆ Built-in shelving
- ◆ Walk-out to raised deck
- ◆ Crown moulding

MUD ROOM/SIDE ENTRANCE

- ◆ Ceramic tile flooring
- ◆ Mirrored closet
- ◆ Overlooks front garden

UPPER LEVEL

MASTER BEDROOM

- ◆ Hardwood flooring
- ◆ Two double closets
- ◆ Single closet with built-in shelving

5 PIECE ENSUITE BATHROOM

- ◆ Standing shower
- ◆ Ceramic tile flooring
- ◆ Built-in storage
- ◆ Jet tub
- ◆ Two sinks

BEDROOM

- ◆ Hardwood flooring
- ◆ Double closet

5 PIECE BATHROOM

- ◆ Glass shower doors
- ◆ Ceramic tile flooring
- ◆ Two sinks
- ◆ Built-in storage

BEDROOM

- ◆ Hardwood flooring
- ◆ Double closet

BEDROOM

- ◆ Hardwood flooring
- ◆ Double closet
- ◆ Built-in shelving
- ◆ Overlooks front garden

BEDROOM

- ◆ Hardwood flooring
- ◆ Double closet

LAUNDRY ROOM

- ◆ Laminate flooring '16
- ◆ Built-in shelving & storage
- ◆ L-shaped folding counter
- ◆ Built-in cubby
- ◆ Stacked stainless steel Kenmore washer & dryer '10

LOWER LEVEL

- ◆ Above-ground window
- ◆ Walk-out to driveway
- ◆ Three storage closets & one double closet

RECREATION ROOM

- ◆ Pine tongue & groove walls
- ◆ Built-in shelving & storage
- ◆ Laminate flooring '10
- ◆ Wood fireplace with brick surround & built-in shelving
- ◆ Above-ground windows
- ◆ Exposed wooden beams

KITCHEN

- ◆ Built-in cabinetry
- ◆ Findlay stove "as is"
- ◆ Beaumark fridge

BEDROOM

- ◆ Above-ground picture window
- ◆ Double closet
- ◆ Laminate flooring '10
- ◆ Overlooks back garden

BEDROOM

- ◆ Laminate flooring '10
- ◆ Above-ground picture window
- ◆ Double closet

3 PIECE BATHROOM

- ◆ Dual door access
- ◆ Built-in mirrored storage
- ◆ Standing shower
- ◆ Floor-to-ceiling storage closet

UTILITY ROOM

- ◆ Built-in shelving
- ◆ Furnace '12
- ◆ Central air conditioning '12
- ◆ 200 amp service '10
- ◆ Water softener (not hooked up)
- ◆ Owned tankless hot water system

BACKYARD

- ◆ Oversized raised composite wooden deck
- ◆ Mature trees & shrubs
- ◆ Privacy fence
- ◆ Private yard
- ◆ Playscape