



14 Gretman Crescent

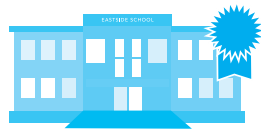
Markham, ON
HOODQ HIGHLIGHTS

Karen Millar
416.443.0300
karenmillarteam.com



SCHOOLS

With excellent public schools near this home, your kids will get a great education in the neighbourhood. There are also 2 Catholic schools and 2 private schools within 2.3km of this address.



Bayview Fairways PS

Grades PK to 8
255 Bayview Fairways Dr
0.8 KM

Willowbrook PS

Grades PK to 8
45 Willowbrook Rd
0.98 KM

Thornlea SS

Grades 9 to 12
8075 Bayview Ave
1.34 KM

Thornhill SS

Grades 9 to 12
167 Dudley Ave
3.06 KM

Bayview Glen PS

Grades PK to 6
42 Limcombe Dr
1.66 KM

Johnsview Village PS

Grades PK to 8
41 Porterfield Crescent
1.14 KM

PARKS & REC.

This home is located in park heaven, with 15 parks and a long list of recreation facilities within a 20 minute walk from this address.



Green Lane Park

Thorne Ln
0.22 KM



3 min

Windy Hill Park

Breckonwood Crescent
0.68 KM



9 min

Cakebread Park

Willowbrook Rd
0.28 KM



4 min

FACILITIES WITHIN A 20 MINUTE WALK

- | | |
|--------------------|---------------------|
| 2 Pools | 1 Dog Park |
| 12 Playgrounds | 13 Sports Fields |
| 9 Tennis Courts | 2 Basketball Courts |
| 6 Ball Diamonds | 3 Rinks |
| 1 Community Centre | 2 Tracks |
| 7 Trails | 4 Multi-Use Pads |

TRANSIT

Public transit is at this home's doorstep for easy travel around the city. The nearest street transit stop is only a 2 minute walk away.

Nearest Street Level Transit Stop
Green Lane / Aileen Av



2 min

SAFETY

With safety facilities in the area, help is always close by. Facilities near this home include a fire station, a police station, and a hospital within 6.53km.

Fire Station

7801 Bayview Ave
1.19 KM

Police Station

30 Ellerslie Ave
6.36 KM

North York General Hospital

4001 Leslie St
6.53 KM

CONVENIENCE

This home is located near everyday amenities to make your daily errands easier.

Gym

0.53 KM

Grocery

0.98 KM

Pharmacy

1.01 KM

Cleaner

0.53 KM

Coffee

0.99 KM

Gas Station

1.97 KM



Disclaimer: By accessing this information you have agreed to our terms of service, which are hereby incorporated by reference. This information may contain errors and omissions. You are not permitted to rely on the contents of this information and must take steps to independently verify its contents with the appropriate authorities (school boards, governments etc.). As a recipient of this information, you agree not to hold us, our licensors or the owners of the information liable for any damages, howsoever caused.



Signature Realty
IND. OWNED & OPERATED BROKERAGE

Karen
MILLARTEAM
BROKER

EXCEEDING YOUR EXPECTATIONS



direct 416.390.2566 | office 416.443.0300 | fax 416.443.8619 | karen@karenmillar.com | karenmillarteam.com

Prospective purchasers should satisfy themselves as the accuracy of the information contained in this feature sheet. All measurements are approximate. The statements contained herein are based on sources which we believe are reliable, but for which we assume no responsibility.

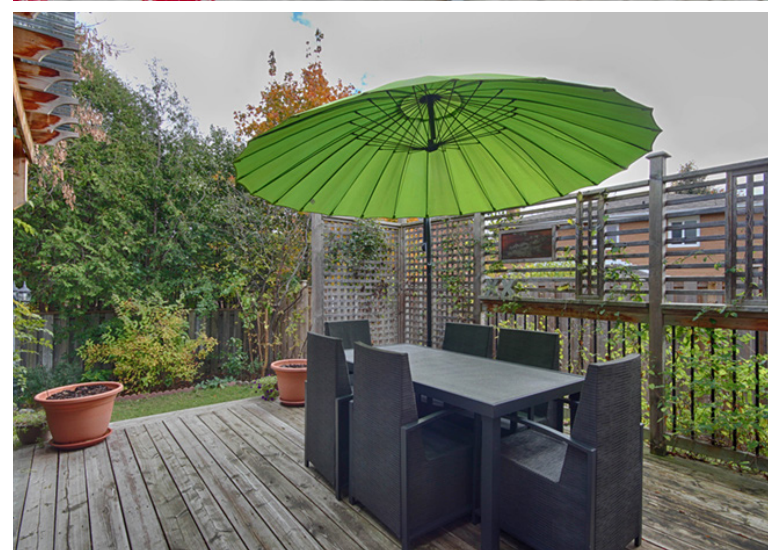


14 Gretman Crescent









SPECIAL FEATURES

- 100 amp service
- Central vacuum
- Central air conditioning
- Roof '17
- All new bathrooms '15
- Updated flooring throughout

FRONT EXTERIOR

- Double car garage
- Four car parking
- Interlocking brick walkway
- Landscaped gardens
- Mature trees & shrubs

BACKYARD

- Entertainment sized raised wooden deck with pergola '14
- Gas BBQ hookup
- Fenced yard
- Private
- Mature trees & shrubs

VESTIBULE

- Double door entrance
- Ceramic tile flooring

FOYER

- Ceramic tile flooring
- Double door coat closet
- Ceramic tile flooring
- Sliding door walk-out to back garden
- Broom closet

FAMILY ROOM

- Overlooks front garden
- Wood fireplace with brick surround
- Jatoba hardwood flooring
- Large bay window

LIVING/DINING ROOM

- Open concept
- Large picture window
- Jatoba hardwood flooring
- Sliding door walk-out to back garden & deck

KITCHEN

- Granite countertops
- Pantry
- Ceramic tile flooring
- Ceramic tile backsplash
- Stainless steel inlay double sink
- Pot lights
- Kenmore stainless steel French door bottom mount fridge
- Kenmore stainless steel built-in dishwasher
- Kenmore stainless steel built-in stove
- Stainless steel built-in stove vent
- Stainless steel microwave

BREAKFAST AREA

- Custom kitchen island
- Granite countertop
- Built-in storage with soft close drawers
- 6 bar stools
- Sliding door walk-out to back garden

2 PIECE POWDER ROOM '15

- Ceramic tile flooring
- Ceramic tile surround
- Vanity with Marble countertop & inlay sink

UPPER LEVEL

- Linen closet
- Oak staircase '16

MASTER BEDROOM

- Birch hardwood flooring '16
- Ceiling fan
- Overlooks back garden
- Walk-through his & her combined closets
 - Built-in organizers

4 PIECE ENSUITE BATHROOM '15

- Ceramic tile flooring
- Ceramic tile surround
- Soaker tub
- Extra-long custom ceramic sink with wooden vanity

BEDROOM

- Birch hardwood flooring
- Double glass sliding door closet with built-in organizers
- Overlooks back garden

BEDROOM

- Birch hardwood flooring
- Double glass sliding door closet with built-in organizers
- Overlooks front garden

BEDROOM

- Birch hardwood flooring
- Extra wide double glass sliding door closet with built-in organizers
- Mirrored closet with built-in organizers
- Overlooks front garden

4 PIECE BATHROOM

- Deep soaker tub
- Custom built-in storage
- Ceramic tile flooring
- Ceramic tile surround

LOWER LEVEL

- Ceramic tile flooring
- Wall-to-wall sliding door closets with built-in shelving
- Wall-to-wall closets with built-in lighting
- Storage area under the stairs

BEDROOM

- Double door entrance
- Laminate flooring '17
- Paneled
- Closet

3 PIECE BATHROOM '15

- Standing glass shower
- Ceramic tile flooring
- Ceramic tile surround
- Built-in storage
- Pedestal sink

RECREATION ROOM

- Exposed brick arched entry
- Ceramic tile flooring
- Pot lights

LAUNDRY/UTILITY ROOM

- Vinyl flooring
- Frigidaire fridge
- Kenmore front loading washer & extra-large dryer '15
- Built-in shelving

LOT SIZE

- 65.21 x 124.82 per survey

TAXES

- \$5,447.43/2017

BEDROOMS

- 4+1

BATHROOMS

- 2x4, 1x3, 1x2

PARKING

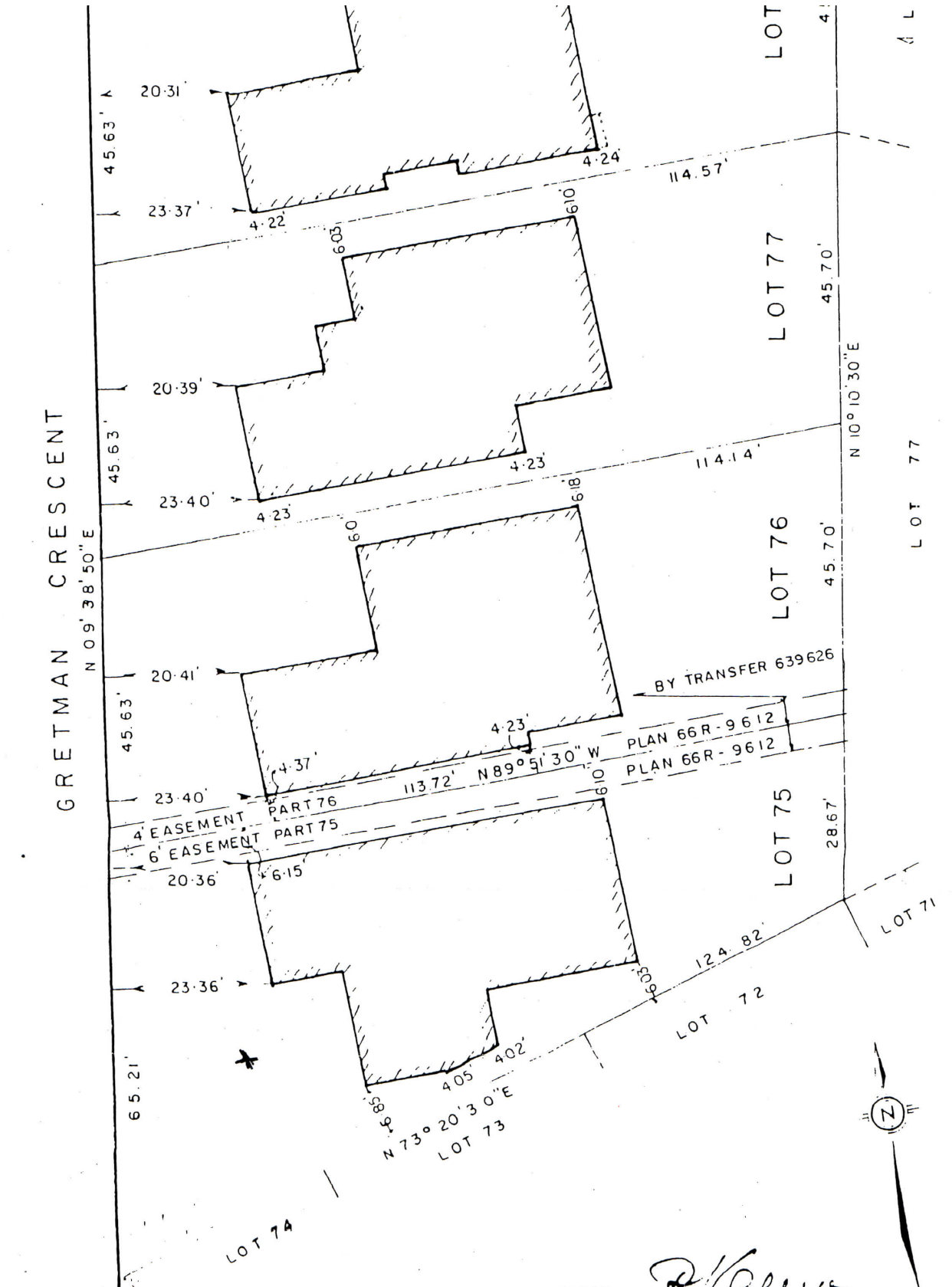
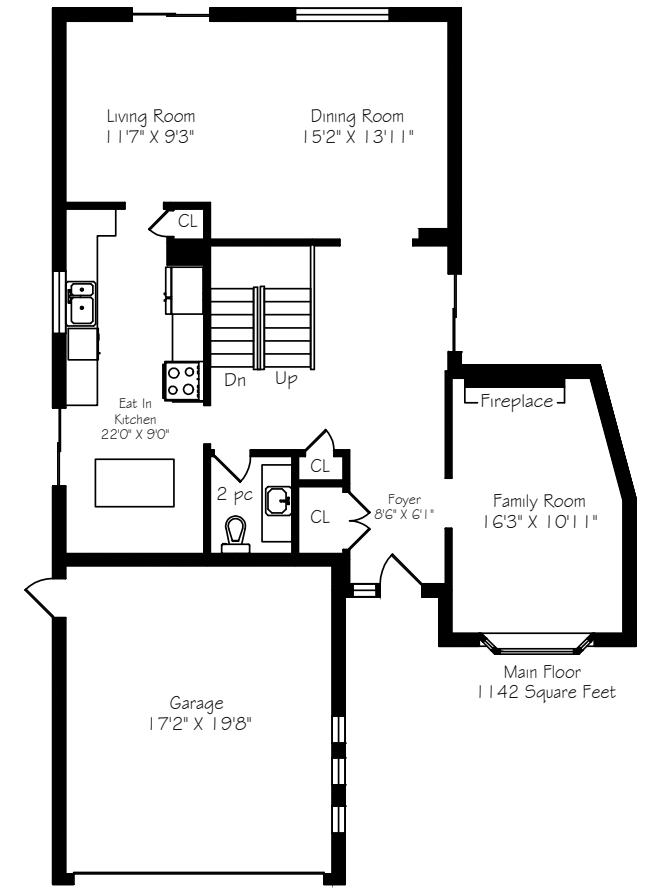
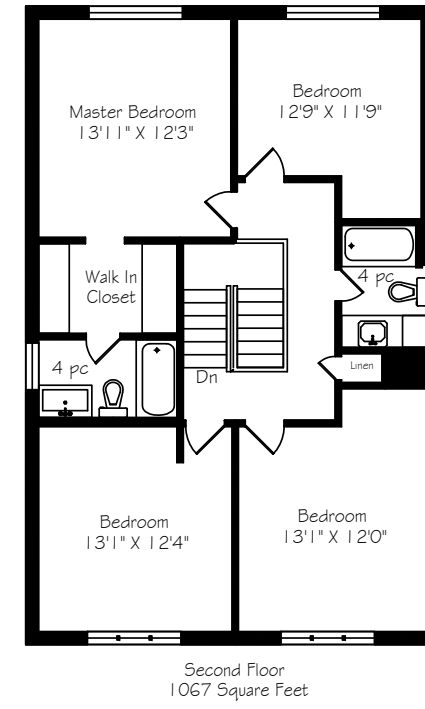
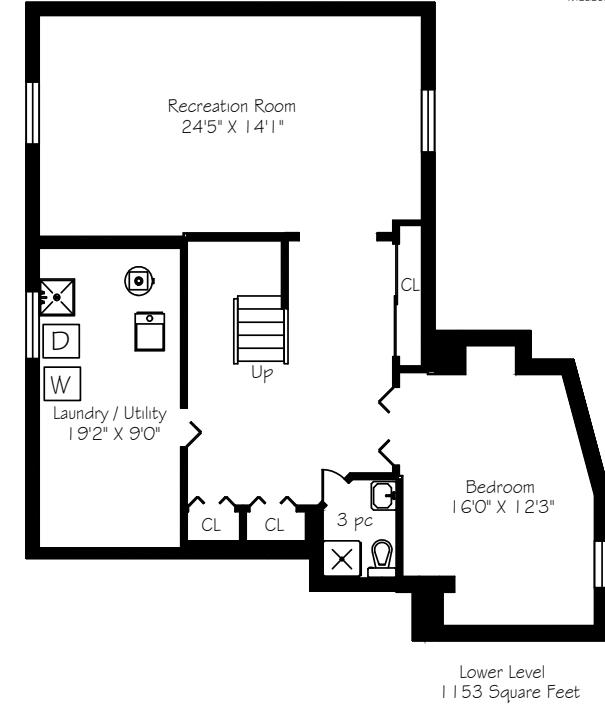
- Double car garage & 4 car parking

POSSESSION

- 120 days/TBA

14 Gretman Crescent

Measurements and Calculations are approximate
To be used as guidelines only
www.measuredup.ca



P SALNA CO LTD.
WELDRICK ROAD

P. Salna
P SALNA
ONTARIO LAND SURVEYOR
RICHMOND HILL, APRIL 13, 1978

ROYAL LEPAGE Signature Realty
IND. OWNED & OPERATED BROKERAGE



Karen
MOLLARTEAM BROKER
EXCEEDING YOUR EXPECTATIONS

direct 416.390.2566 | office 416.443.0300 | fax 416.443.8619 | karen@karenmillar.com | karenmillarteam.com

Prospective purchasers should satisfy themselves as the accuracy of the information contained in this feature sheet. All measurements are approximate. The statements contained herein are based on sources which we believe are reliable, but for which we assume no responsibility.

Prospective purchasers should satisfy themselves as the accuracy of the information contained in this feature sheet. All measurements are approximate. The statements contained herein are based on sources which we believe are reliable, but for which we assume no responsibility.