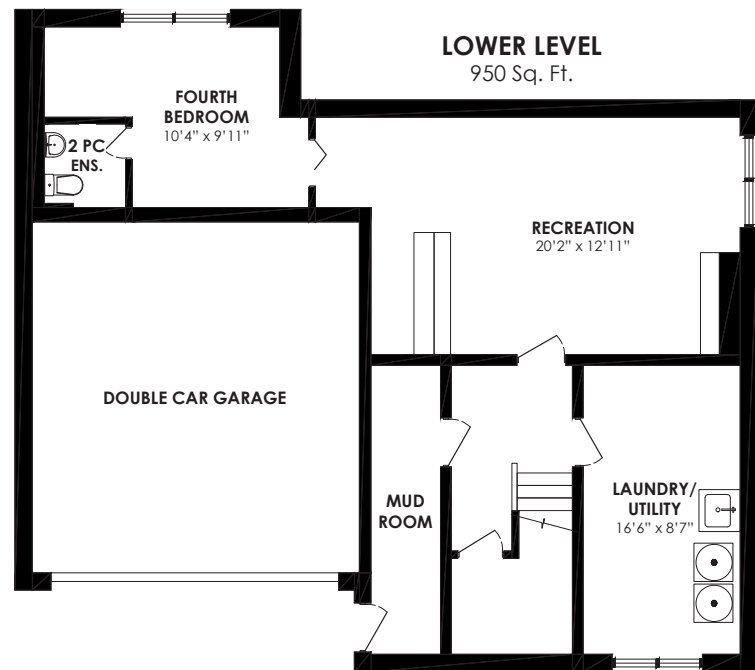
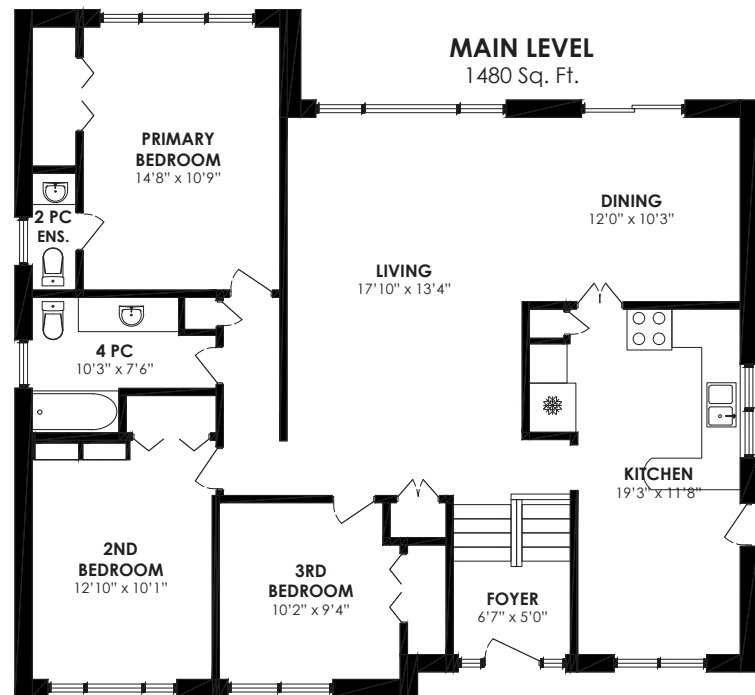


# Floor Plan



For more photos & information on this property

**SCAN HERE** →



*Karen*  
**MOLLARTEAM**  
BROKER  
EXCEEDING YOUR EXPECTATIONS

**ROYAL LEPAGE** Signature Realty  
IND. OWNED & OPERATED BROKERAGE

ROYAL LEPAGE AWARD IN EXCELLENCE  
SRES  
Royal LePage Shelter Foundation COMMISSION DONOR

direct 416.390.2566 | office 416.443.0300 | karen@karenmillar.com | karenmillarteam.com

Prospective purchasers should satisfy themselves as to the accuracy of the information contained in this feature sheet. All measurements are approximate. The statements contained herein are based on sources which we believe are reliable, but for which we assume no responsibility.



— WELCOME TO —  
*57 Valentine Drive*



[www.57Valentine.com](http://www.57Valentine.com)





### *Exterior*

- Double car garage + 4 car parking

### *Foyer*

- Broadloom
- Chandelier

### *Living Room*

- Broadloom
- Crown moulding
- Overlooks backyard
- Mirrored closet

### *Dining Room*

- Broadloom
- Crown moulding
- Sliding door walk-out to backyard
- Chandelier
- Wall-to-wall mirrored wall

### *Kitchen*

- KitchenAid stove
- NuTone fan
- Double sink
- KitchenAid fridge
- Broom closet
- Breakfast area
- Side entrance
- Overlooks front yard

### *Hallway*

- Linen closet

### *Primary Bedroom*

- Broadloom
- Overlooks backyard
- Double closet
- Crown moulding

### *2 Piece Ensuite Bathroom*

- Storage cabinet

### *4 Piece Bathroom*

- Granite countertop
- Wall-to-wall mirror
- Ceramic tile shower and tub surround
- Ceramic tile flooring
- Sliding glass door shower enclosure

### *Second Bedroom*

- Overlooks front yard
- Double closet
- Crown moulding
- French door
- Broadloom
- Built-in bookcase

### *Third Bedroom*

- Broadloom
- Double closet
- Overlooks front yard

### *Lower Level*

- Broadloom
- Storage under stairs
- Above ground windows

### *Laundry/Utility Room*

- Laundry sink
- Whirlpool washer & dryer
- Overlooks front yard
- Laundry folding counter with storage

### *Recreation Room*

- Broadloom
- Wood-burning fireplace with brick surround
- Above-ground windows
- Wood paneling
- Broadloom
- Dry bar

### *Bedroom*

- Above-ground windows
- Double closet
- Broadloom

### *2 Piece Ensuite Bathroom*

- Pedestal sink
- Ceramic tile flooring

### *Mud Room*

- Closet
- Separate entrance



### *In Your Neighbourhood*

- Parkwoods Village
- Parkway Mall
- Longo's Grocery Stores
- York Mills Gardens
- Donalda Golf Club
- Fairview Mall
- CF Shops at Don Mills
- Cineplex VIP Theatre
- LA Fitness
- Brookbanks Public Library
- TTC, Highway 401 & DVP

### *Local Schools*

- Rene Gordon Health & Wellness Academy
- Donview Middle Health and Wellness Academy
- Don Mills Collegiate Institute
- George S. Henry Academy
- Brian Public School
- Rene Gordon Health & Wellness Academy
- St. Timothy Catholic School
- Bayview Glen
- Crestwood Preparatory College
- St. Clement's School
- Toronto French School
- Havergal College
- Upper Canada College
- Crescent School
- La Citadelle International Academy

### *Lot size*

- 52 x 117 ft.

### *Taxes*

- \$7,367.44 2026

### *Bedrooms*

- 3 + 1

### *Bathrooms*

- 1 x 4, 2 x 2

### *Possession*

- 90 days/tba

### *Parking*

- Double car garage + 4 car parking