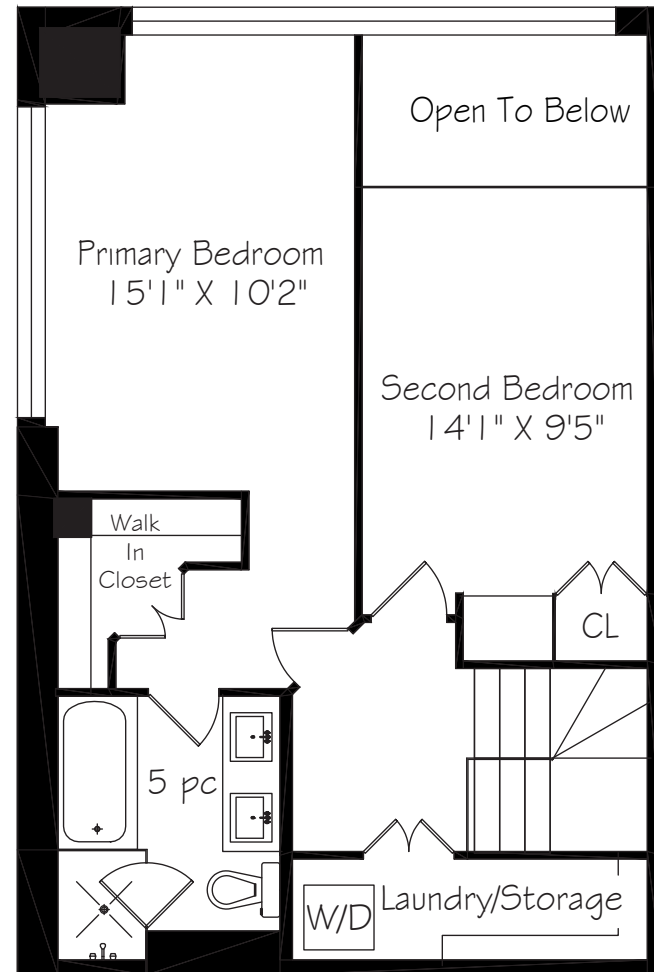


Main Floor
668 Square Feet



Second Floor
626 Square Feet



WELCOME TO

36 Blue Jays Way

SUITE 1125



THE SOHO HOTEL & RESIDENCES

TAXES: \$4,351.00/2025

BEDROOMS: 2

BATHROOMS: 1x5, 1x3

PARKING: 1 underground spot (#13, Level B)

POSSESSION: Immediate/TBA

MAINTENANCE FEES:

\$1,490.43/month (includes: water, heat, central air, parking, common elements & building insurance)

For more photos & information on this property

SCAN HERE



direct 416.390.2566 | office 416.443.0300 | fax 416.443.8619 | karen@karenmillar.com | karenmillarteam.com

Prospective purchasers should satisfy themselves as the accuracy of the information contained in this feature sheet. All measurements are approximate. The statements contained herein are based on sources which we believe are reliable, but for which we assume no responsibility.





SPECIAL FEATURES

- Fully renovated
- Sun-filled corner unit
- Totally renovated custom built kitchen
- Stainless-steel Kitchen appliances
- Rare open concept Wise layout with 2-storey loft ceiling in Living Room
- Two fully enclosed bedrooms
- Popcorn ceilings removed on both floors
- All new flooring on 2nd floor
- Crown molding throughout the house
- North-west City views from every window
- Access to 5-star SOHO Hotel amenities
- Rentable lockers in building
- Steps away from rooftop patio

AMENITIES

- Concierge
- Gym with personal trainer
- Indoor pool
- Sauna
- Security system
- Guest suites
- Rooftop deck/garden with fire pit & barbecues

FOYER

- Ensuite walk-in locker under stairs
- Coat closet
- Engineered hardwood flooring
- Crown moulding

3 PIECE BATHROOM

- Totally renovated
- Porcelain tile flooring
- Custom push-drawer vanity with marble counter & inlay sink
- Pot lights
- Walk-in glass shower
- Stone accent wall
- Built-in sconce

LIVING ROOM

- Open concept
- Sun-filled room
- 2-storey loft style ceiling
- Engineered hardwood flooring
- Wall-to-wall, floor-to-ceiling window
- North-west city views
- Crown moulding

DINING ROOM

- Open concept
- Combined with Living Room
- Engineered hardwood flooring

KITCHEN

- Totally renovated
- Open concept
- New engineered hardwood flooring
- LED under cabinet lighting
- Custom made cupboards to ceiling
- Soft close cabinets
- Caesarstone countertop with expansion of breakfast bar & built-in storage cabinets on both sides
- Stainless-steel inlay double sink
- Caesarstone backsplash
- Designer crystal pendant lights
- Designer centre light
- Bosch built-in stainless-steel dishwasher
- Bosch built-in stainless-steel oven
- Built-in cooktop
- Frigidaire stainless-steel French door bottom mount fridge with ice and water dispenser
- Frigidaire stainless-steel built-in microwave
- Stainless-steel wine fridge

2ND LEVEL

- New custom glass railing & stairs
- Designer chandelier
- Crown moulding
- German made commercial grade, high quality laminate flooring

PRIMARY BEDROOM

- Sun-filled room
- Custom walk-in closet with double door entry, built-in custom drawer organizers & lighting
- German made commercial grade, high quality laminate flooring
- Large triple door wardrobe
- Wall-to-wall windows
- North-west city views
- Custom shades & blackout curtains
- Crown moulding

5 PIECE ENSUITE BATHROOM

- Totally renovated
- Walk-in glass shower with marble flooring & porcelain surround
- Porcelain flooring
- Large soaker tub
- Pot lights
- Large vanity with two inlay sinks, marble countertop & built-in storage with soft close cabinets
- Two sconces



BEDROOM

- Sun-filled room
- German made commercial grade, high quality laminate flooring
- Floor-to-ceiling, wall-to-wall glass safety wall
- Overlooks Living Room
- Crown moulding
- Custom built-in double door wardrobe with built-in desk and overhead shelving
- Six floating shelves

LAUNDRY ROOM

- Double door entry
- Ceramic tile flooring
- GE front loading washer & dryer
- Large double door wardrobe
- Built-in clothes drying rack/shelf
- House-like laundry room with lots of storage

IN YOUR NEIGHBOURHOOD

- Access to SOHO Hotel top of the line amenities
- TIFF Bell Lightbox
- The Rogers Centre
- The CN Tower
- Ripley's Aquarium
- Newly updated Clarence Square
- The Rec Room
- Roundhouse Park
- David Pecaut Square
- Canoe Landing Community Recreation Centre
- Metro Toronto Convention Centre
- LCBO on Spadina
- Loblaws on Queen St. W.
- Scotiabank Theatre
- MEC Toronto
- Steps to King West & Queen West Shops & restaurants at The Well
- Steps to the Fashion & Financial Districts
- Short walk to Harbourfront Centre
- Ogden Junior Public School (grades JK-6)
- Ryerson Community School (grades JK-8 & offers junior extended & middle immersion programs)
- Harbord Collegiate Institute (grades 9-12)
- Central Technical School (grades 9-12)
- Lord Lansdowne Junior Public School (for early immersion programs grades SK-06)
- King Edward Junior and Senior Public School for grade 7 extended French program (grades JK-08)