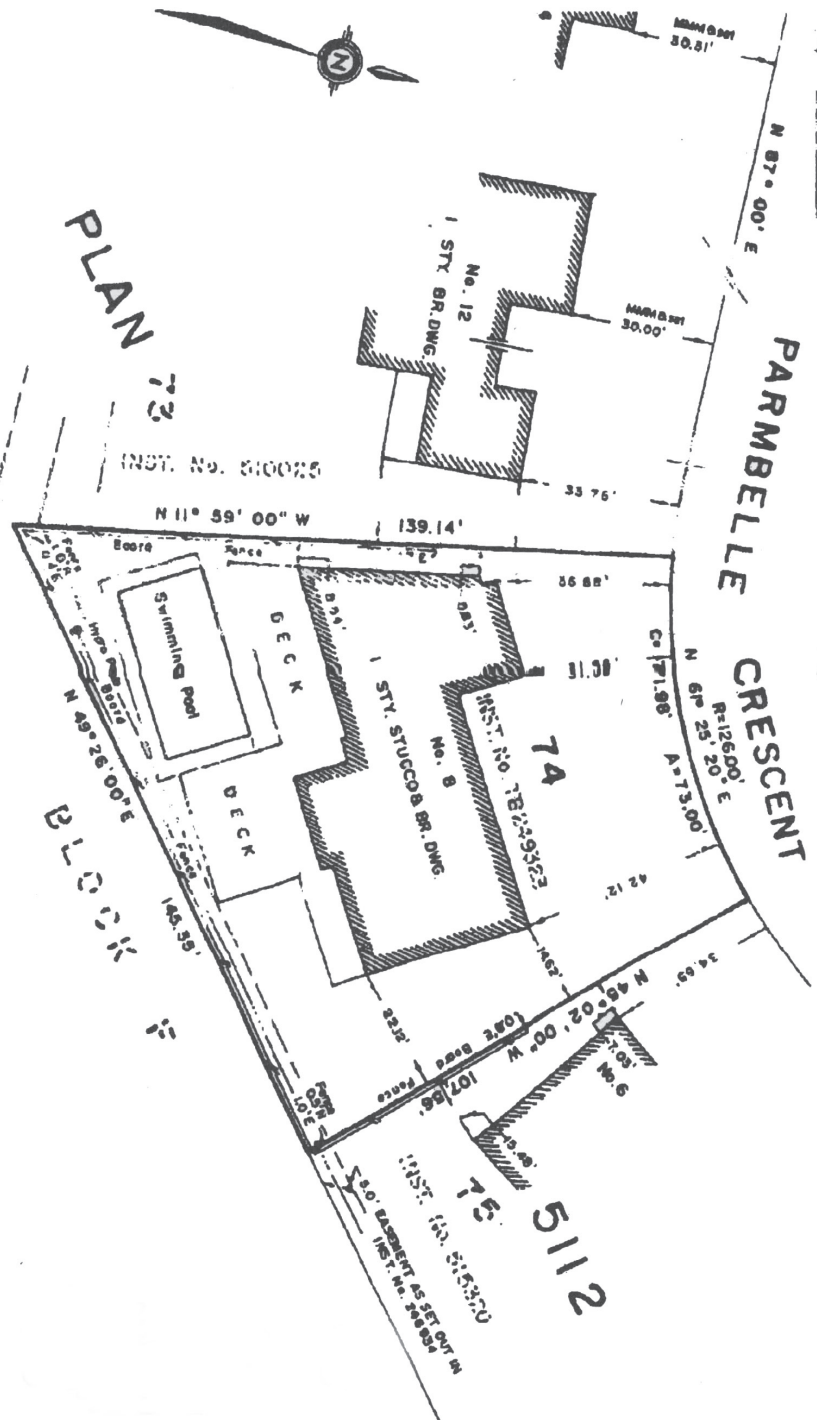


Two are
with the
thereafter.
s of the
this shown
was
of Dec. 1986
Helmut Piller
Toronto Land Surveyor

PLAN AND SURVEY OF BUILDING LOCATION ON
LOT 74
REGISTERED PLAN 5112
CITY OF NORTH YORK
MUNICIPALITY OF METROPOLITAN TORONTO
HELMUT PILLER O.L.S. - 1986
SCALE 1 INCH = 30 FEET



BEARINGS ARE REFERRED TO THE SOUTHERLY
LIMIT OF PARMBELLE CRESCENT, AS
SHOWN ON REGD PLAN 5112, HAVING
AN AZIMUTHIC BEARING OF N 87° 00' 00" E

H. Piller Corporation
Surveyors
Toronto
466-1174
SCALE: 1" = 30'
DRAWN BY: R.P.
CHECKED BY: D.H.B.



Signature Realty
IND. OWNED & OPERATED BROKERAGE



Karen
MOLLARTEAM
BROKER
EXCEEDING YOUR EXPECTATIONS

direct 416.390.2566 | office 416.443.0300 | fax 416.443.8619 | karen@karenmillar.com | karenmillarteam.com

Prospective purchasers should satisfy themselves as the accuracy of the information contained in this feature sheet. All measurements are approximate. The statements contained herein are based on sources which we believe are reliable, but for which we assume no responsibility.