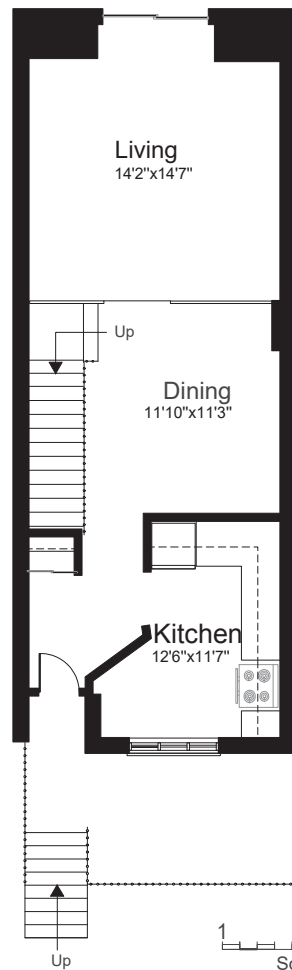
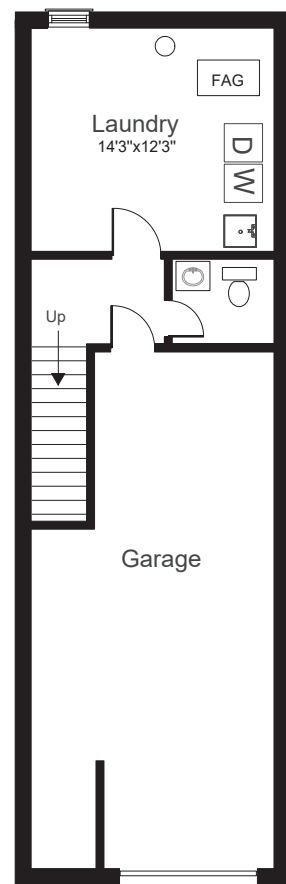


# Floor Plan

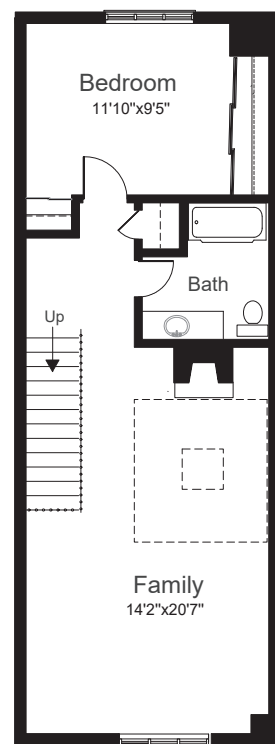
**MAIN FLOOR**  
620 Sq. Ft.



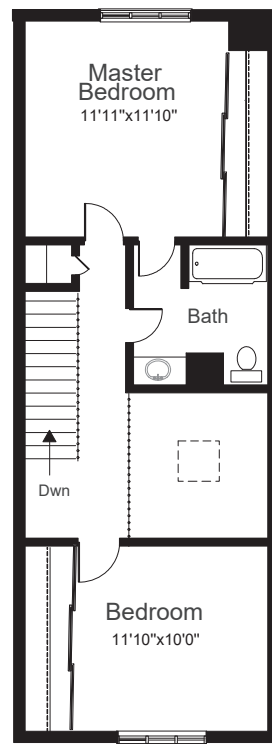
**BASEMENT**  
330 Sq. Ft.



**2nd FLOOR**  
620 Sq. Ft.



**3rd FLOOR**  
620 Sq. Ft.



Scale: 1 5 10  
Up

**TAXES:** \$3,490.19/2017

**BEDROOMS:** 3

**BATHROOMS:** 2x4, 1x2

**PARKING:** Extra-large single car garage & 1 car parking

**POSSESSION:** July 2018

**MAINTENANCE FEE:**

\$580.00/mo includes water, cable, building insurance, common elements and parking



Signature Realty  
IND. OWNED & OPERATED BROKERAGE

*Karen*  
**MOLLARTEAM**  
BROKER  
EXCEEDING YOUR EXPECTATIONS



direct 416.390.2566 | office 416.443.0300 | fax 416.443.8619 | karen@karenmillar.com | karenmillarteam.com

Prospective purchasers should satisfy themselves as the accuracy of the information contained in this feature sheet. All measurements are approximate. The statements contained herein are based on sources which we believe are reliable, but for which we assume no responsibility.



*28 Dutch Myrtle Way*



### SPECIAL FEATURES

- New roof
- New skylight
- Bamboo flooring '13
- Furnace '17
- Central air conditioning '15
- 100 amp service
- Central air conditioning
- Mostly new windows
- Extra-large garage with storage & level 2 charging station
- Central location

### FRONT EXTERIOR

- Private balcony
- One car parking
- Extra-large single car garage
  - Level 2 electric car charging station
  - New heavy duty insulated garage door with 2 openers
  - Storage closet with lighting
  - Stainless steel Frigidaire fridge
  - 100 amps

### BACKYARD

- Patio
- Privacy fencing

### FOYER

- Bamboo flooring '13
- Coat closet

### KITCHEN

- Bamboo flooring '13
- Stainless steel double sink
- Lots of natural sunlight
- Royal stove
- GE bottom mount fridge
- Built-in Miele dishwasher
- Large picture window '15

### DINING ROOM

- Open concept
- Bamboo flooring '13

### LIVING ROOM

- Open concept
- Sunken room
- Bamboo flooring '13
- Sliding door walk-out to private backyard '15
- Pot lights

### 2ND LEVEL

- Linen closet
- Bamboo flooring '13

### FAMILY ROOM

- Cathedral ceiling
- New skylight
- Wood burning fireplace with brick surround & custom storage
- Bamboo flooring '13
- Large picture window '15
- Lots of natural sunlight

### 4 PIECE BATHROOM

- Heated ceramic flooring

### BEDROOM

- Bamboo flooring '13
- Wall-to-wall closet with built-in organizers
- Picture window '15

### 3RD LEVEL

- Bamboo flooring '13
- Walk-in linen closet
- Overlooks Family Room

### BEDROOM

- Broadloom
- Wall-to-wall closet with built-in organizers
- Picture window '15

### MASTER BEDROOM

- Wall-to-wall closet with built-in organizers
- Broadloom
- California style shutters
- Picture window '15

### 4 PIECE SEMI ENSUITE BATHROOM

- Heated ceramic flooring

### LOWER LEVEL

- Access to Garage

### 2 PIECE POWDER ROOM

- Ceramic tile flooring

### LAUNDRY/UTILITY ROOM

- Front loading Miele washer
- Kenmore dryer
- Above-ground window