

A horizontal line representing a beam of length 10 feet. A bracket above the line indicates the total length is 10'. A smaller bracket below the line, starting from the left end, indicates a section of length 5'. The beam is divided into 10 equal segments by tick marks, with the first 5 segments highlighted by the 5-foot bracket.

Main Floor
1706 Square Feet

Garage
20'3" X 20'1"

Dining Room
13'8" X 11'7"

Living Room
18'4" X 13'1"

Kitchen
13'7" X 10'6"

Breakfast Area
8'7" X 6'9"

Foyer
12'0" X 6'2"

Master Bedroom
13'2" X 11'4"

Second Bedroom
11'6" X 9'7"

Third Bedroom
13'8" X 9'11"

Fireplace

CL

CL

CL

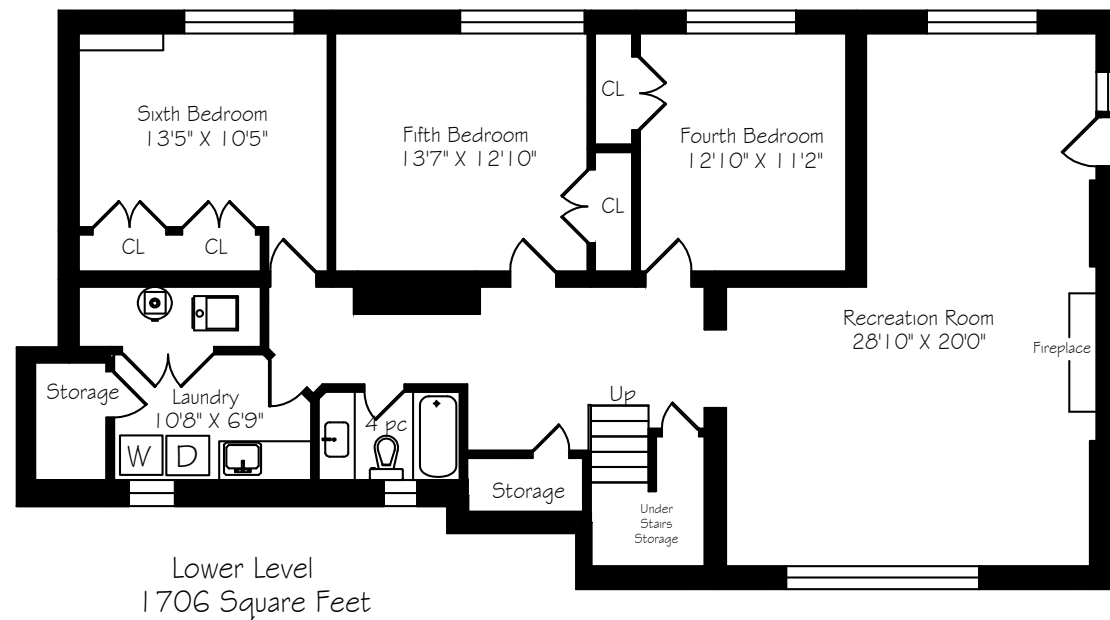
Linen

5 pc

4 pc

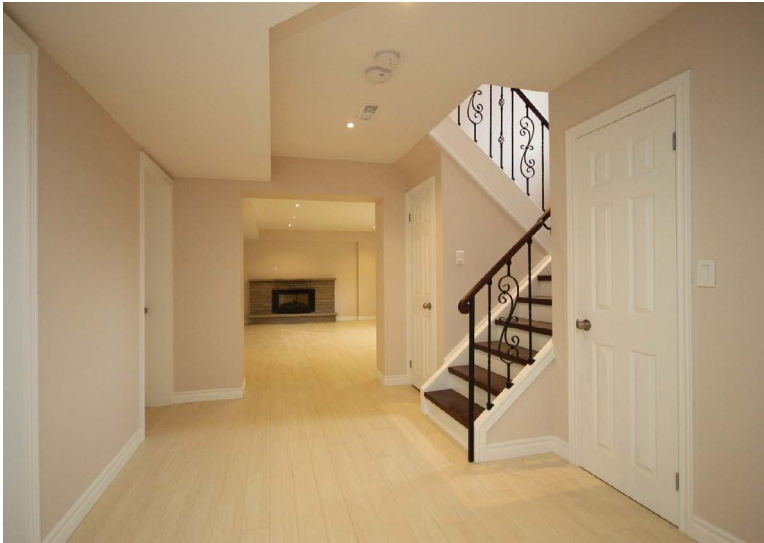
Dn

Dn



Prospective purchasers should satisfy themselves as to the accuracy of the information contained in this feature sheet. All measurements are approximate. The statements contained herein are based on sources which we believe are reliable, but for which we assume no responsibility.





Exterior

- Double car garage
- Four car parking
- Stone patio, steps & walkway
- Custom glass railing
- Mature trees & shrubs

Backyard

- Raised wooden deck
- Mature trees & shrubs
- Stone patio

Main Level

- Hardwood flooring
- Linen closet
- Custom iron railing to lower level

Foyer

- Steel double door entry with lead glass window & wrought iron detailing
- Double door coat closet
- Stone flooring
- Pot lights

Living Room

- Hardwood flooring
- Pot lights
- Overlooks back garden
- Electric fireplace
- Large picture window

Dining Room

- Hardwood flooring
- Pot lights
- Sliding door walkout to back garden

Kitchen

- Stone flooring
- Stone countertops
- Soft close drawers
- Stainless s steel inlay double sink
- Glass tile backsplash
- Overlooks front garden
- Access to Garage
- Eat-in breakfast area
- Stainless steel French door fridge with water & ice dispenser
- Stainless steel stove
- Built-in stainless steel dishwasher
- Pot lights

Master Bedroom

- Hardwood flooring
- Large picture window
- Overlooks front garden
- Extra-large double door closet

4 Piece Ensuite Bathroom

- Stone flooring
- Stone counter with inlay sink
- Deep soaker tub

Bedroom

- Hardwood flooring
- Overlooks back garden
- Double closet
- Large picture window

Bedroom

- Hardwood flooring
- Large picture window
- Overlooks back garden
- Double closet

5 Piece Bathroom

- Stone countertop
- Two inlay sinks
- Pot lights
- Deep soaker tub

Lower Level

- Laminate flooring
- Storage under stairs
- Large walk-in closet

Recreation Room

- Laminate flooring
- L-shaped
- Above-ground windows
- Gas fireplace with stone surround
- Large above-ground picture window
- Overlooks back garden
- Walk-up to back garden

Bedroom

- Laminate flooring
- Large above-ground window
- Double closet
- Overlooks back garden

Bedroom

- Laminate flooring
- Large above-ground window
- Double closet
- Overlooks back garden

Bedroom

- Laminate flooring
- Large above-ground window
- Two double closets
- Overlooks back garden

Laundry Room

- Ceramic tile flooring
- Kenmore front loading washer & dryer
- Hot water tank (rental)
- Furnace '13
- Access to storage room

4 Piece Bathroom

- Deep soaker tub
- Above-ground window
- Stone countertop
- Stone flooring

Bedroom

- 3 +3

Bathrooms

- 1x5, 2x4

Parking

- Double car garage & 4 car parking

Possession

- Immediate/TBA

For more photos and information about this property, please visit

www.11TetburyCres.com