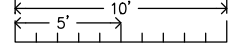
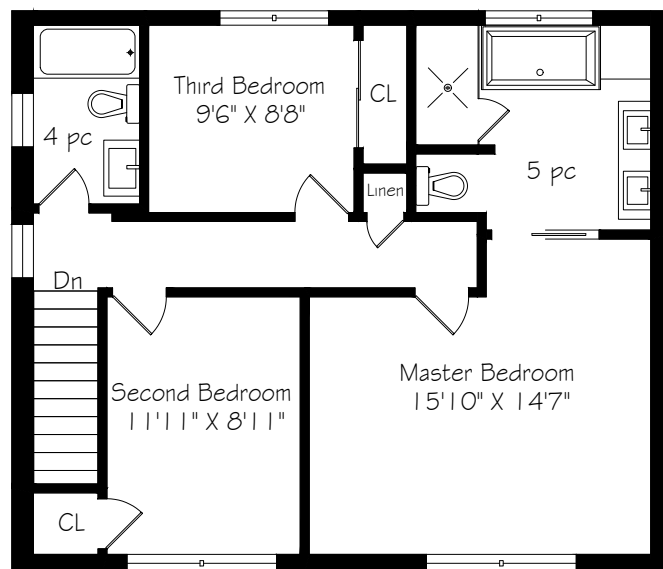


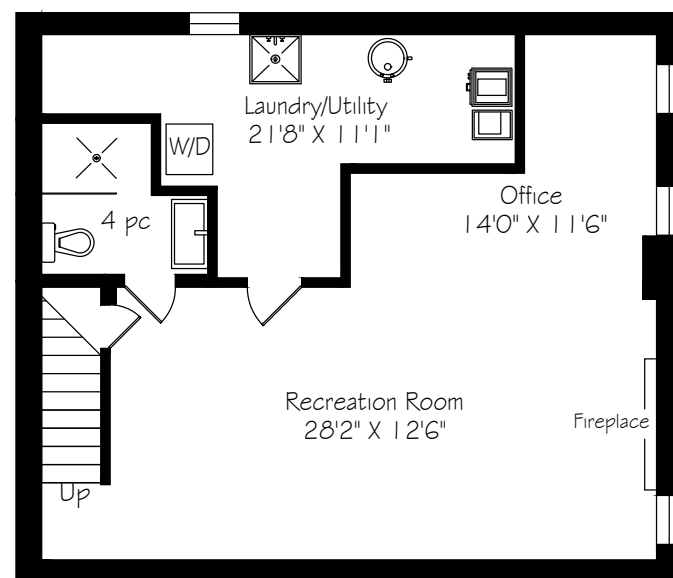
Main Floor
796 Square Feet



Measurements and Calculations are approximate
To be used as guidelines only



Second Floor
796 Square Feet



Lower Level
796 Square Feet



50 Hopperton Drive



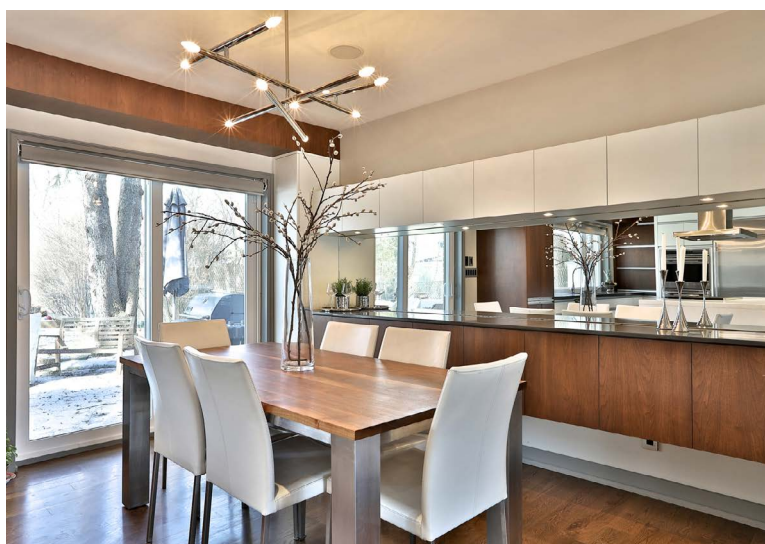
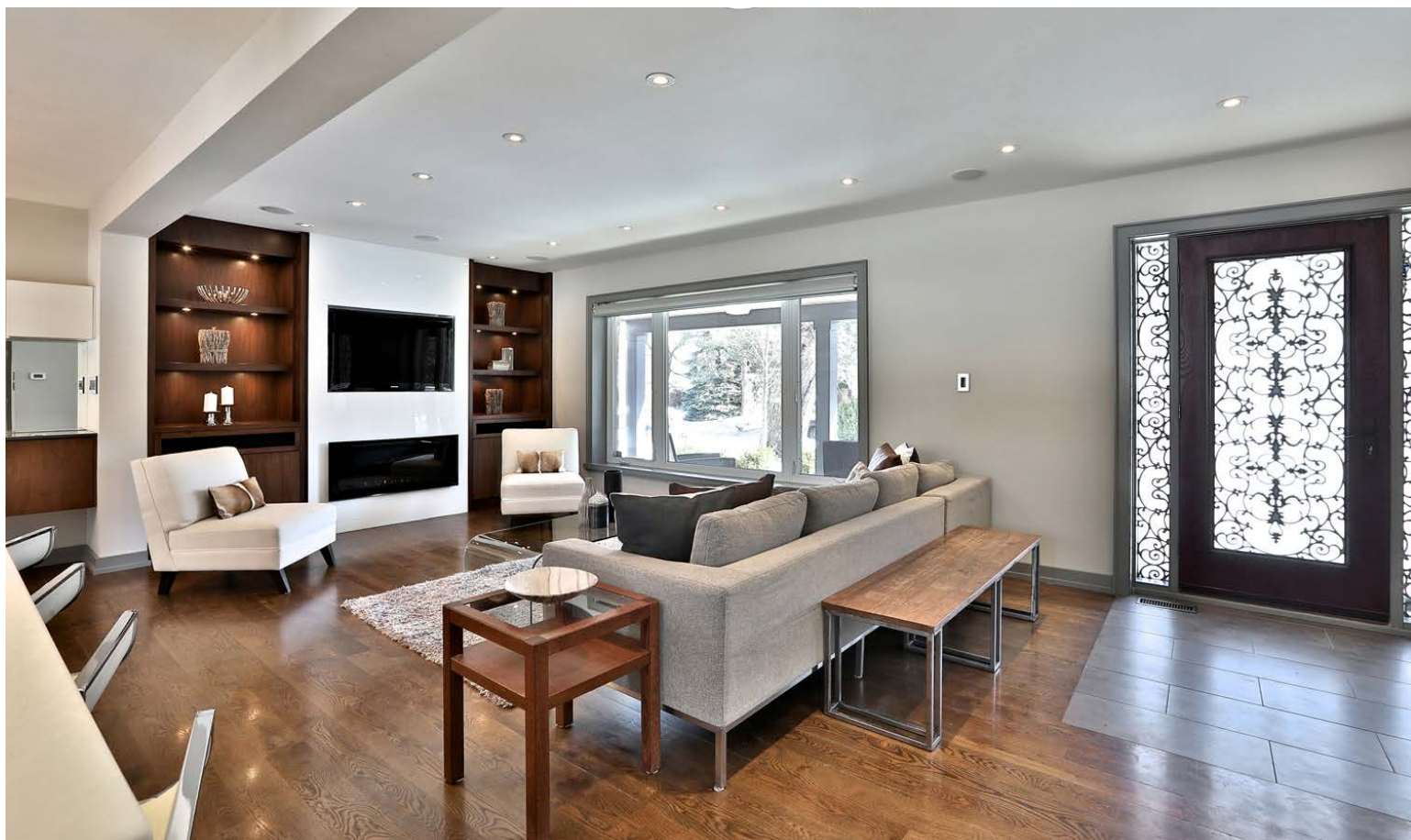
ROYAL LEPAGE Signature Realty
IND. OWNED & OPERATED BROKERAGE



Karen
MOLLARTEAM BROKER
EXCEEDING YOUR EXPECTATIONS

direct 416.390.2566 | office 416.443.0300 | fax 416.443.8619 | karen@karenmillar.com | karenmillarteam.com

Prospective purchasers should satisfy themselves as the accuracy of the information contained in this feature sheet. All measurements are approximate. The statements contained herein are based on sources which we believe are reliable, but for which we assume no responsibility.





Special Features

- Roof '10
- Furnace '10
- 100 AMPS
- Windows '10
- Central Vacuum
- Nuvo whole home audio system
- Extra-tall solid core interior doors
- Soundproof insulation

Foyer

- Single car garage + 6 car parking
- Covered porch
- Frosted door with wrought-iron insert
- Porcelain tile flooring
- Closet

Living Room

- White oak hardwood flooring
- Pot lights
- Gas fireplace
- Built-in entertainment unit
- Motorized blinds with built-in wall remote control

Dining Room

- White oak hardwood flooring
- Mirrored backsplash
- Sliding door walkout to backyard
- Motorized blinds with built-in wall remote control
- Mirrored backsplash
- Mounted cabinets & cupboards

2 Piece Bathroom

- Porcelain tile flooring
- Pedestal sink

Separate Entrance

Kitchen

- White oak hardwood flooring
- Under-mount farm sink
- Large picture window overlooks backyard
- Motorized blinds with built-in wall remote control
- Stainless steel Subzero refrigerator
- Stainless steel Wolf double oven
- Built-in stainless steel Miele dishwasher
- Soft-close drawers and cupboards
- Pot lights
- Honed Caesarstone island
- Stainless steel 6-burner Wolf stove
- Stainless steel Faber hood vent
- Breakfast bar with 4 stools
- Pot drawers

2nd Level

- Glass & stainless steel railing
- Linen closet

4 Piece Bathroom

- Floating vanity
- Porcelain tile flooring & shower surround
- Mirrored cabinet

Bedroom

- White oak hardwood flooring
- Single closet with built-in organizers
- Overlooks front yard

Bedroom

- White oak hardwood flooring
- Overlooks backyard
- Double mirrored closet with built-in organizers
- Access to attic

Master Bedroom

- White oak hardwood flooring
- Overlooks front yard
- Double wardrobe
- Two sconces
- Pot lights

5 Piece Ensuite Bathroom '19

- Heated porcelain tile flooring
- Dual sinks
- Glass enclosed shower with porcelain tile surround
- Vita shower tower
- Shower niche
- Pocket door

Lower Level

- Broadloom
- Storage under staircase

3 Piece Bathroom

- Floating vanity
- Vita shower tower
- Shower niche
- Glass enclosed shower with porcelain tile surround

Utility/ Laundry Room

- Stacked LG washer & dryer
- Sink

Recreation Room

- Broadloom
- Gas fireplace with stone surround and mantle
- Pot lights
- Office nook with slat wall panel

Backyard

- Fully fenced
- Garden shed
- Flagstone patio
- Sandbox
- Mature trees & shrubs
- Gas barbecue hook-up

Lot size

- 54.04 x 152.2 ft. Rear: 67 ft.

Taxes

- \$6,482.16/2018

Bedrooms

- 3

Bathrooms

- 1x5, 1x4, 1x3, 1x2

Parking

- Single car garage + 6 car parking

Possession

- 60 days or tba

How Water Tank

- Rental

For more photos and information about this property, please visit

www.50Hopperton.com