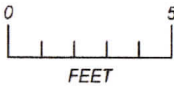
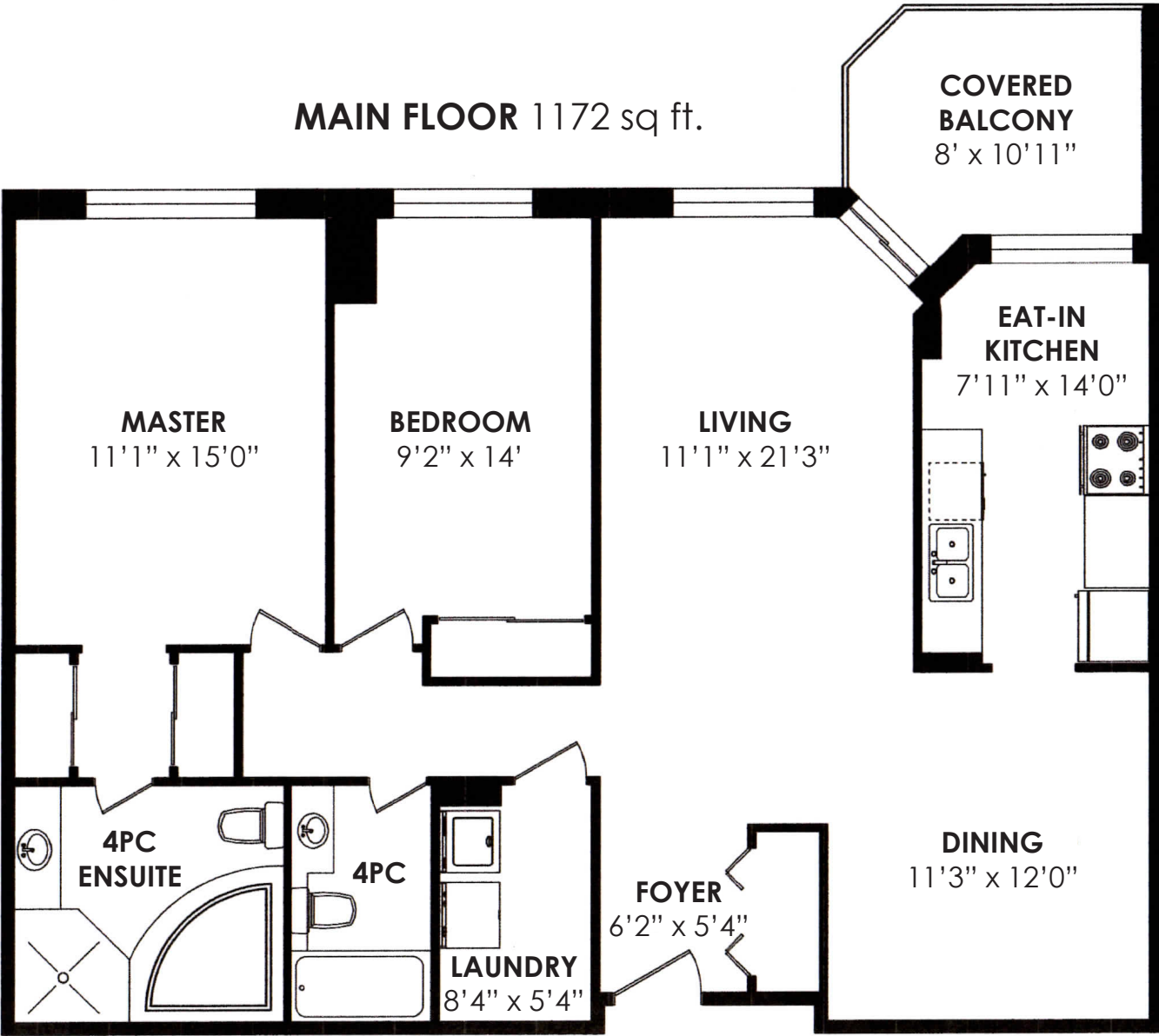


FLOOR PLAN



ROYAL LEPAGE Signature Realty
IND. OWNED & OPERATED BROKERAGE

Connect With Us On
LinkedIn Facebook Twitter YouTube Instagram

Karen
MOLLARTEAM
BROKER
EXCEEDING YOUR EXPECTATIONS

416.443.0300 • karenmillarteam.com • karen@karenmillar.com

Prospective purchasers should satisfy themselves as the accuracy of the information contained in this feature sheet. All measurements are approximate. The statements contained herein are based on sources which we believe are reliable, but for which we assume no responsibility.

1200 DON MILLS ROAD
— SUITE 506 —





FOYER

- Marble flooring
- Double closet

LIVING ROOM

- Engineered hardwood flooring
- Open concept
- Sliding door walk-out to private balcony

DINING ROOM

- Engineered hardwood flooring
- Crystal chandelier

KITCHEN

- Eat-in breakfast nook
- Ceramic tile flooring
- Ceramic tile backsplash
- Overlooks balcony
- GE fridge
- GE stove
- Built-in Kenmore dishwasher

MASTER BEDROOM

- Engineered hardwood flooring
- Two sliding mirrored double door closets

4 PIECE ENSUITE BATHROOM

- Ceramic tile flooring
- Large soaker tub
- Walk-in shower with ceramic surround
- Pot lights

BEDROOM

- Engineered hardwood flooring
- Sliding mirrored double door closet

4 PIECE BATHROOM

- Ceramic tile flooring

LAUNDRY ROOM

- Deep freezer
- Built-in cabinets
- GE washer & dryer

TAXES

- \$2,732.66/2019

BEDROOMS

- 2

BATHROOM

- 2x4

PARKING

- 1 underground spot #B136 (P2)

LOCKER

- A127

POSSESSION

- Immediate/TBA

AMENITIES

- 24-hour concierge
- Security system
- Outdoor pool
- Party/meeting room
- Exercise room
- Games room
- Billiards room
- Sauna
- Visitor parking

MAINTENANCE: \$832.28/month. Includes water, heat, hydro, cable, central air conditioning, parking, building insurance and common elements.

