

**TAXES:** \$3,952.05/2020

**BEDROOMS:** 2 + den

**BATHROOMS:** 1x4, 1x3, 1x2

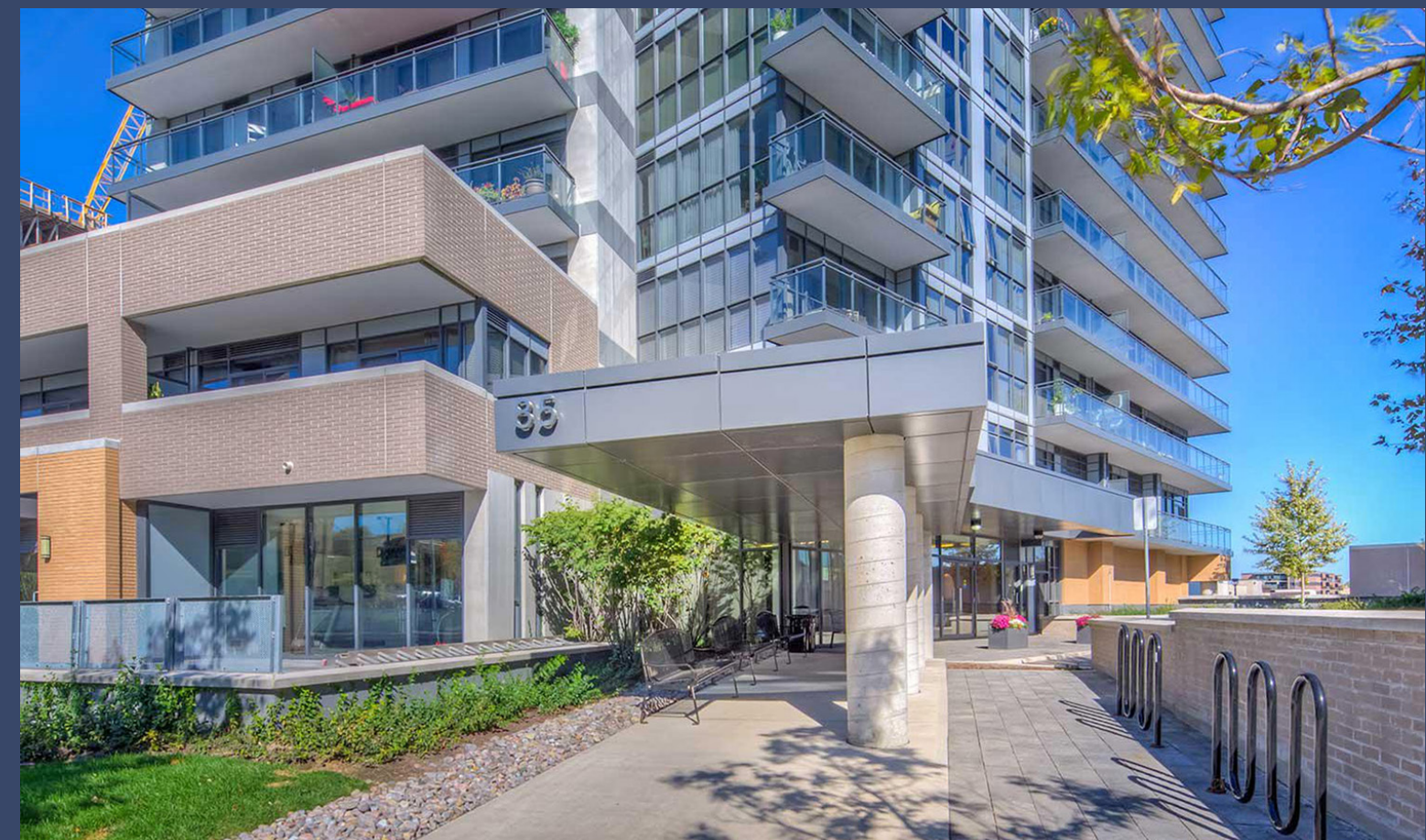
**PARKING:** Level 3 - #20

**LOCKER:** Level 3 - #92

**POSSESSION:** Immediate or tba

**MAINTENANCE FEE:** \$931.41/month

(includes water, common elements,  
building insurance & parking)



# 405-85 THE DONWAY W



**Signature Realty**  
IND. OWNED & OPERATED BROKERAGE

*Karen*  
**MOLLARTEAM**  
BROKER

EXCEEDING YOUR EXPECTATIONS



direct 416.390.2566 | office 416.443.0300 | fax 416.443.8619 | karen@karenmillar.com | karenmillarteam.com

Prospective purchasers should satisfy themselves as the accuracy of the information contained in this feature sheet. All measurements are approximate. The statements contained herein are based on sources which we believe are reliable, but for which we assume no responsibility.











## SPECIAL FEATURES

- Corner unit
- Overlooks The Shops at Don Mills
- 1225 square feet of living space
- 351 additional square foot wrap-around balcony
- Freshly painted '18
- Hardwood floors throughout
- 5 walk-outs to balcony
- Stainless steel Kitchen appliances
- Close to 401, DVP & TTC including Crosstown LRT
- Steps to 24 Hour Metro, Shoppers Drug Mart & Shops at Don Mills
- Close to walking paths & Edwards Garden/Sunnybrook Park

## AMENITIES

- Party room
- Seasonal outdoor patio
- State-of-the-art fitness room
- Visitor parking
- Concierge

## FOYER

- Hardwood flooring
- Double sliding mirrored door coat closet with built-in organizers
- Large storage closet
- Access to Laundry Closet
  - Stacked high efficiency Whirlpool washer & dryer

## DEN

- French door entry
- Ceiling fan
- Hardwood flooring

## 2 PIECE BATHROOM

- Ceramic tile flooring

## LIVING/DINING ROOM

- Open concept
- Wall-to-wall windows
- Sliding door walk-out to balcony
- Custom shades
- Hardwood flooring



## KITCHEN

- Open concept
- Granite countertops
- Hardwood flooring
- Halogen lighting
- Glass tile backsplash
- Under cabinet lighting
- Sliding door walk-out to balcony
- Built-in stainless-steel KitchenAid microwave
- Built-in stainless-steel KitchenAid stove
- Stainless steel French door KitchenAid fridge with ice/water dispenser
- Breakfast bar
  - 3 pendant lights
  - Built-in stainless-steel KitchenAid dishwasher
- Stainless steel inlay double sink
- Overlooks Living/Dining Room

## MASTER BEDROOM

- Hardwood flooring
- Custom shades
- Wall-to-wall windows
- Two sliding door walk-outs to balcony
- Large walk-in closet with built-in organizers

## 3 PIECE ENSUITE BATHROOM

- Walk-in glass shower with ceramic surround
- Ceramic tile flooring

## BEDROOM

- Hardwood flooring
- Custom shades
- Wall-to-wall windows
- Sliding door walk-out to balcony
- Double sliding mirrored door closet

## 4 PIECE BATHROOM

- Ceramic tile flooring & surround
- Deep soaker tub