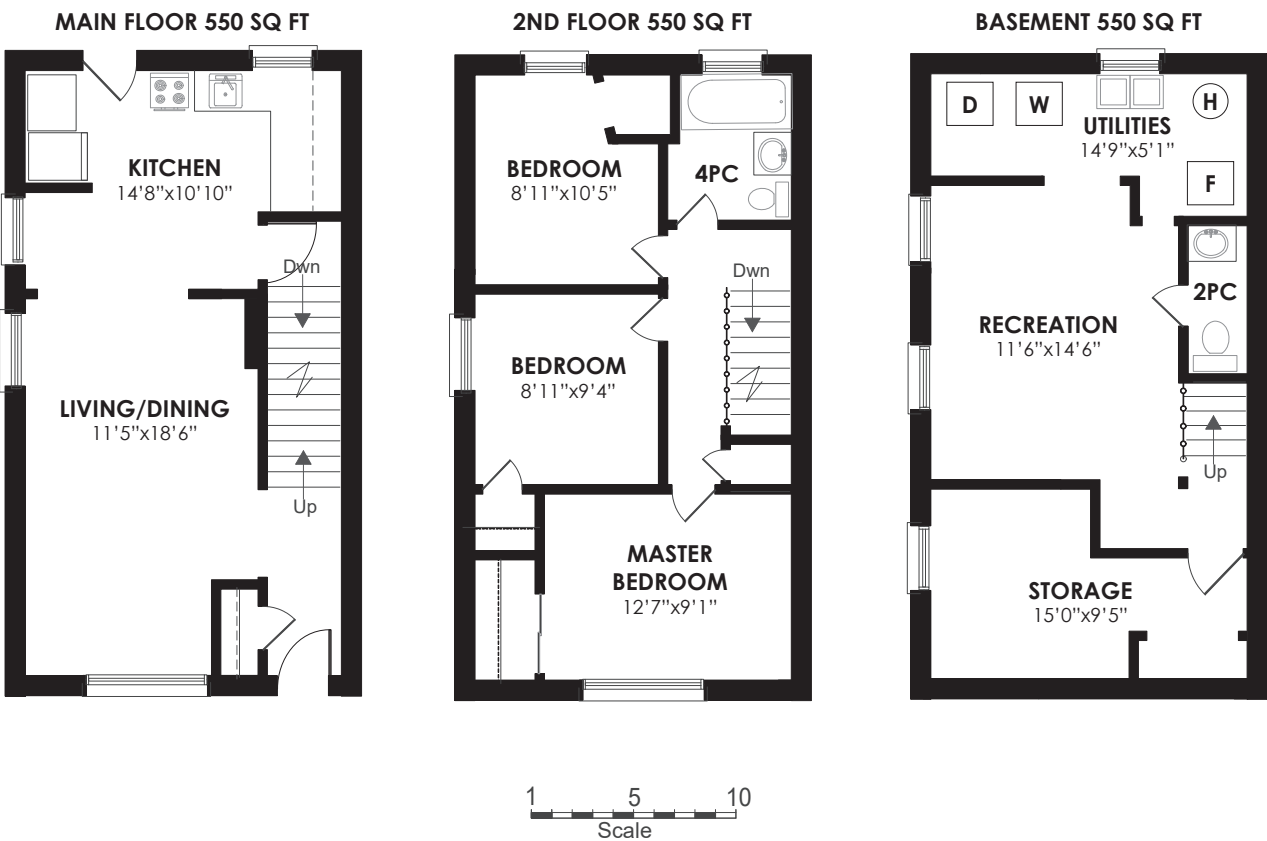




# 22 Chesapeake Avenue



**LOT SIZE:** 29.46 x 102 feet

**TAXES:** \$2,602.01/2019

**BEDROOMS:** 3

**BATHROOMS:** 1x4, 1x2

**POSSESSION:** 60-90 days/TBA

**PARKING:** 2 car parking



**Signature Realty**  
IND. OWNED & OPERATED BROKERAGE

*Karen*  
**MOLLARTEAM**  
BROKER  
EXCEEDING YOUR EXPECTATIONS



416.443.0300 • karenmillarteam.com • karen@karenmillar.com

Prospective purchasers should satisfy themselves as the accuracy of the information contained in this feature sheet. All measurements are approximate. The statements contained herein are based on sources which we believe are reliable, but for which we assume no responsibility.





### SPECIAL FEATURES

- 100 amp service
- Bedrooms & main floor painted '18
- Central air conditioner '19
- Furnace '17
- Updated windows
- Family friendly quiet community
- Five-minute walk to Warden Station
- Short walk to Danforth Gardens Elementary School

### EXTERIOR

- Large front porch with interlocking stone & wood
- Mature trees & shrubs
- Front steps '19
- Gated access to backyard '18

### BACKYARD

- Two car parking
- Fence '19
- Raised wooden deck with built-in storage shed
- Built-in awning
- Stone walkway '19

### FOYER

- Laminate flooring
- Coat closet

### LIVING/DINING ROOM

- Open concept
- Laminate flooring
- Overlooks front garden

### KITCHEN

- Walk-out to deck & backyard
- Laminate flooring
- Ceramic tile backsplash
- Quartz countertop '15
- Inlay stainless steel sink
- Under cabinet lighting
- Built-in pantry
- Overlooks back garden
- Frigidaire stove
- GE fridge
- Panasonic microwave
- Built-in stainless-steel Bosch dishwasher

### 2ND LEVEL

- Hardwood flooring
- Linen closet

### MASTER BEDROOM

- Hardwood flooring
- Overlooks front garden
- Double closet with built-in shelving

### BEDROOM

- Hardwood flooring
- Closet
- Overlooks side garden

### BEDROOM

- Hardwood flooring
- Closet
- Overlooks back garden

### 4 PIECE BATHROOM

- Updated
- Vanity '15
- Built-in mirrored cabinet
- Ceramic tile surround

### LOWER LEVEL

### RECREATION ROOM

- Laminate flooring
- Two above-ground windows

### BEDROOM/STORAGE ROOM

- Above-ground window
- Closet with built-in organizers

### 2 PIECE POWDER ROOM

- Updated
- Ceramic tile flooring

### LAUNDRY/UTILITY ROOM

- Inglis washer "as is"
- Inglis dryer

For more photos and  
information about this property,  
please visit

[www.22ChesapeakeAve.com](http://www.22ChesapeakeAve.com)