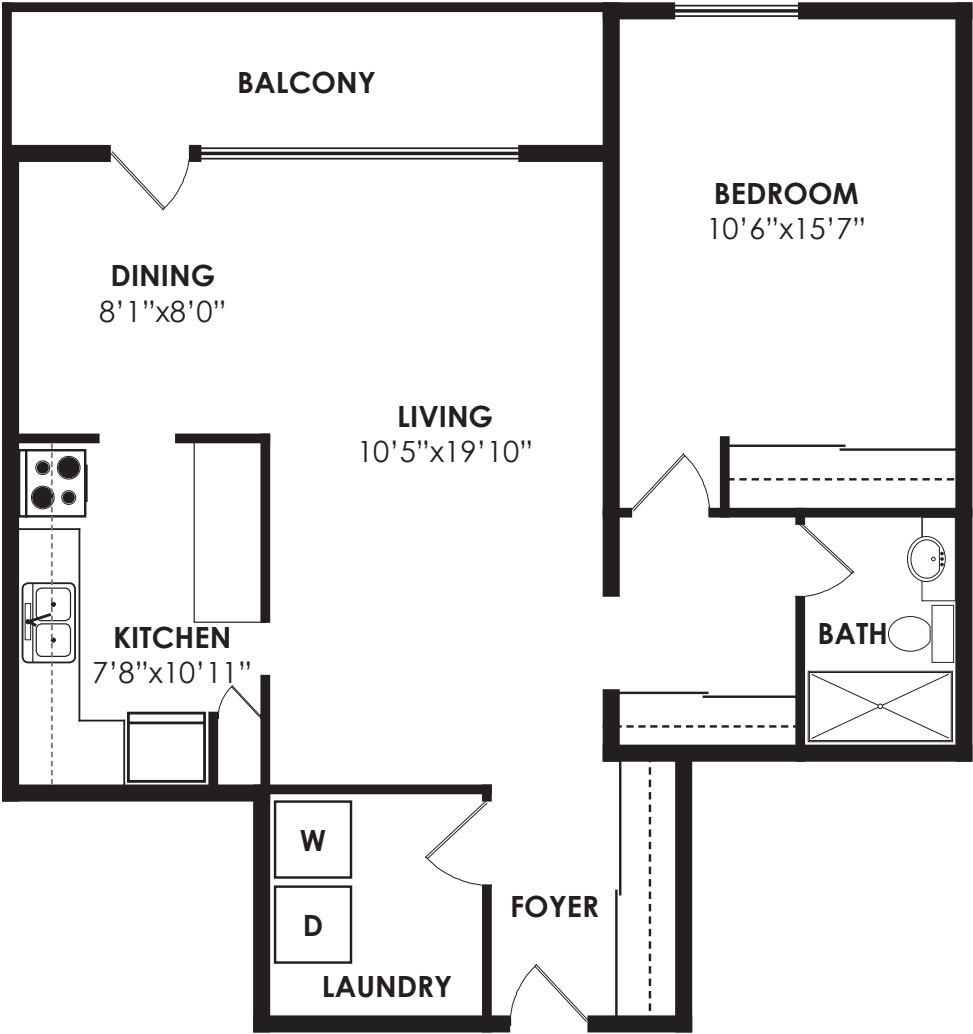


FLOOR PLAN

MAIN FLOOR 790 SQ. FT.



LEASE TERM: 1 year BEDROOMS: 1 BATHROOMS: 1x3
PARKING: 1 underground spot (P1-107) POSSESSION: Immediate/TBA

ROYAL LEPAGE Signature Realty
IND. OWNED & OPERATED BROKERAGE

Karen
MOLLARTEAM BROKER
EXCEEDING YOUR EXPECTATIONS

416.443.0300 • karenmillarteam.com • karen@karenmillar.com



Prospective purchasers should satisfy themselves as the accuracy of the information contained in this feature sheet. All measurements are approximate. The statements contained herein are based on sources which we believe are reliable, but for which we assume no responsibility.

1350 YORK MILLS ROAD

— SUITE 1704 —





FOYER

- Ceramic tile flooring
- Floor-to-ceiling mirrored sliding coat closet

LAUNDRY ROOM

- Inglis washer & dryer 'as is'
- Built-in shelving
- Floor-to-ceiling mirrored sliding door storage closet

LIVING ROOM

- Open concept
- Laminate flooring
- California style blinds

DINING ROOM

- Ceramic tile flooring
- Walk-out to balcony
- City views

KITCHEN

- Ceramic tile flooring
- Ceramic tile backsplash
- Stainless steel double sink
- Built-in breakfast bar
- GE stove 'as is'
- Built-in GE dishwasher 'as is'
- Kenmore fridge 'as is'
- Built-in stove vent 'as is'
- Built-in pantry

MASTER BEDROOM

- Laminate flooring
- Mirrored accent wall
- Double floor-to-ceiling sliding door closet

3 PIECE BATHROOM

- Ceramic tile flooring
- Walk-in shower
- Built-in mirrored storage cabinet

AMENITIES

- Outdoor pool
- Exercise room
- Party room
- Games room
- Sauna
- Visitor parking