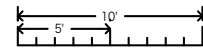
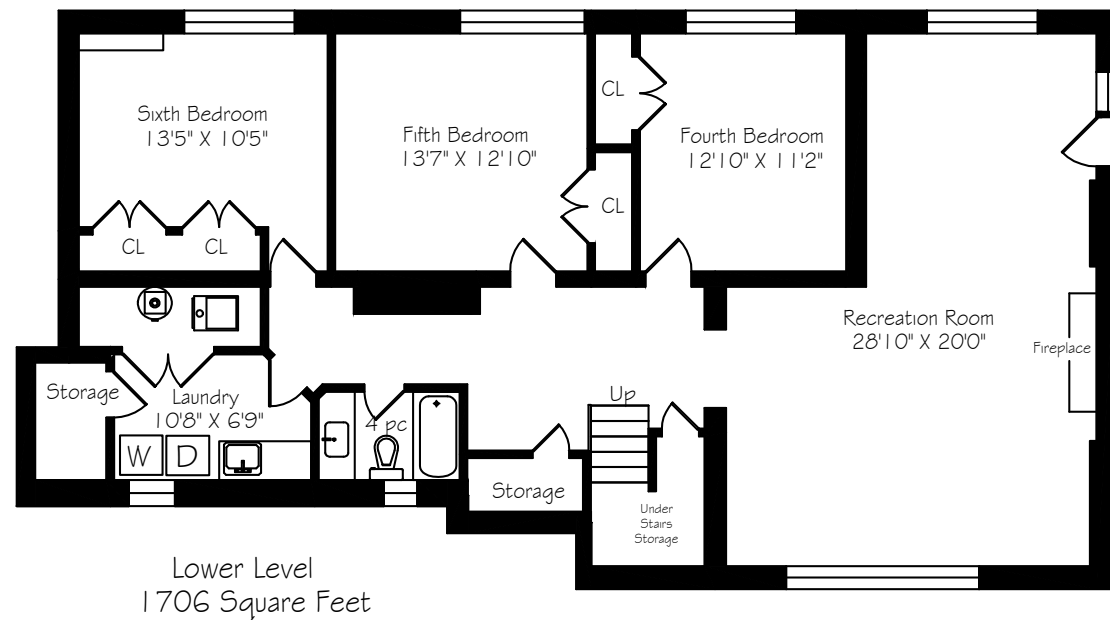
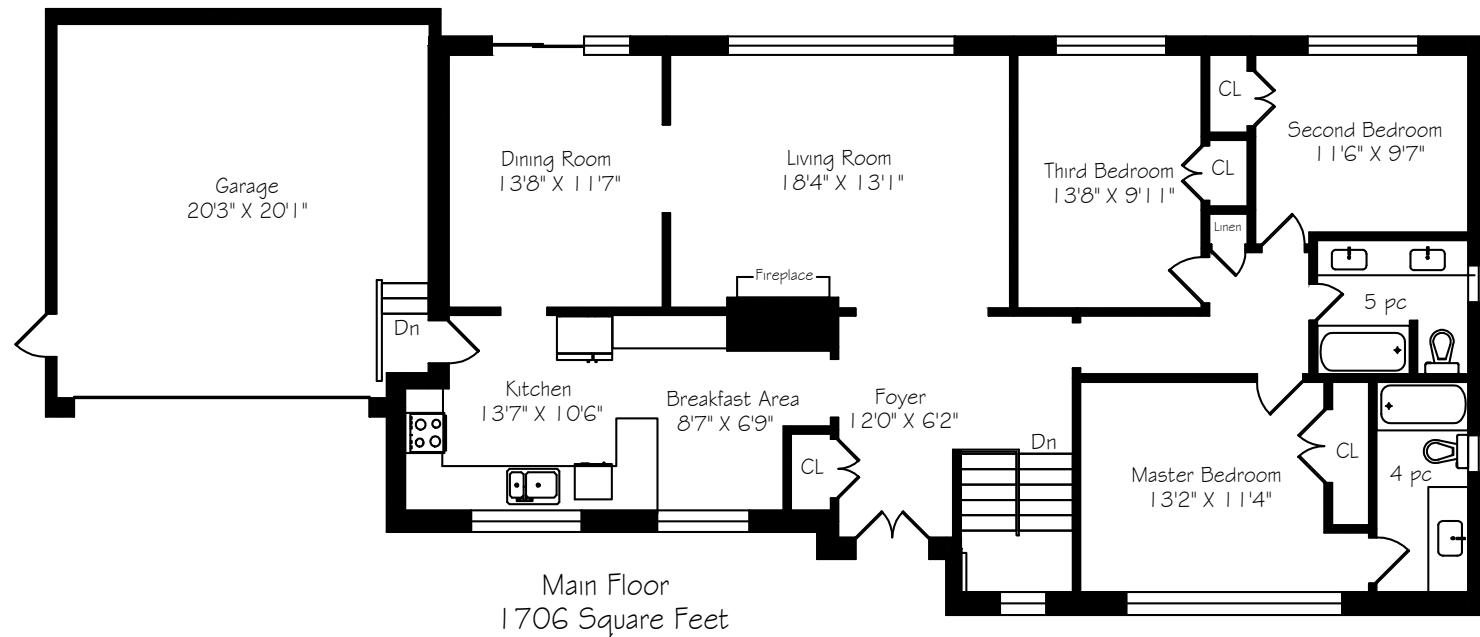


## 11 Tetbury Crescent



Measurements and Calculations are approximate.  
To be used as guidelines only.  
www.measuredup.ca



## 11 Tetbury Crescent



Signature Realty  
IND. OWNED & OPERATED BROKERAGE

Karen  
**MILLARTEAM**  
BROKER

EXCEEDING YOUR EXPECTATIONS



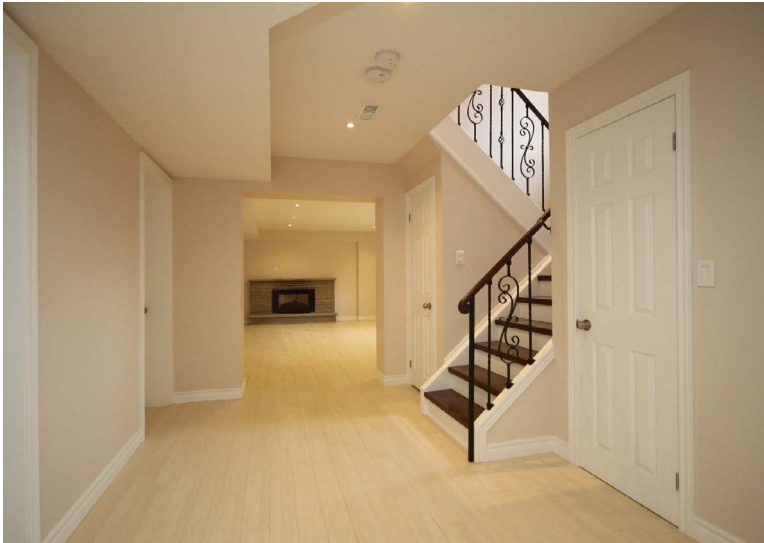
direct 416.390.2566 | office 416.443.0300 | fax 416.443.8619 | karen@karenmillar.com | karenmillarteam.com

Prospective purchasers should satisfy themselves as the accuracy of the information contained in this feature sheet. All measurements are approximate.  
The statements contained herein are based on sources which we believe are reliable, but for which we assume no responsibility.











*Exterior*

- Double car garage
- Four car parking
- Stone patio, steps & walkway
- Custom glass railing
- Mature trees & shrubs

*Backyard*

- Raised wooden deck
- Mature trees & shrubs
- Stone patio

*Main Level*

- Hardwood flooring
- Linen closet
- Custom iron railing to lower level

*Foyer*

- Steel double door entry with lead glass window & wrought iron detailing
- Double door coat closet
- Stone flooring
- Pot lights

*Living Room*

- Hardwood flooring
- Pot lights
- Overlooks back garden
- Electric fireplace
- Large picture window

*Dining Room*

- Hardwood flooring
- Pot lights
- Sliding door walkout to back garden

*Kitchen*

- Stone flooring
- Stone countertops
- Soft close drawers
- Stainless s steel inlay double sink
- Glass tile backsplash
- Overlooks front garden
- Access to Garage
- Eat-in breakfast area
- Stainless steel French door fridge with water & ice dispenser
- Stainless steel stove
- Built-in stainless steel dishwasher
- Pot lights

*Master Bedroom*

- Hardwood flooring
- Large picture window
- Overlooks front garden
- Extra-large double door closet

*4 Piece Ensuite Bathroom*

- Stone flooring
- Stone counter with inlay sink
- Deep soaker tub

*Bedroom*

- Hardwood flooring
- Overlooks back garden
- Double closet
- Large picture window

*Bedroom*

- Hardwood flooring
- Large picture window
- Overlooks back garden
- Double closet

*5 Piece Bathroom*

- Stone countertop
- Two inlay sinks
- Pot lights
- Deep soaker tub

*Lower Level*

- Laminate flooring
- Storage under stairs
- Large walk-in closet

*Recreation Room*

- Laminate flooring
- L-shaped
- Above-ground windows
- Gas fireplace with stone surround
- Large above-ground picture window
- Overlooks back garden
- Walk-up to back garden

*Bedroom*

- Laminate flooring
- Large above-ground window
- Double closet
- Overlooks back garden

*Bedroom*

- Laminate flooring
- Large above-ground window
- Double closet
- Overlooks back garden

*Bedroom*

- Laminate flooring
- Large above-ground window
- Two double closets
- Overlooks back garden

*Laundry Room*

- Ceramic tile flooring
- Kenmore front loading washer & dryer
- Hot water tank (rental)
- Furnace '13
- Access to storage room

*4 Piece Bathroom*

- Deep soaker tub
- Above-ground window
- Stone countertop
- Stone flooring

*Bedroom*

- 3 +3

*Bathrooms*

- 1x5, 2x4

*Parking*

- Double car garage & 4 car parking

*Possession*

- Immediate/TBA