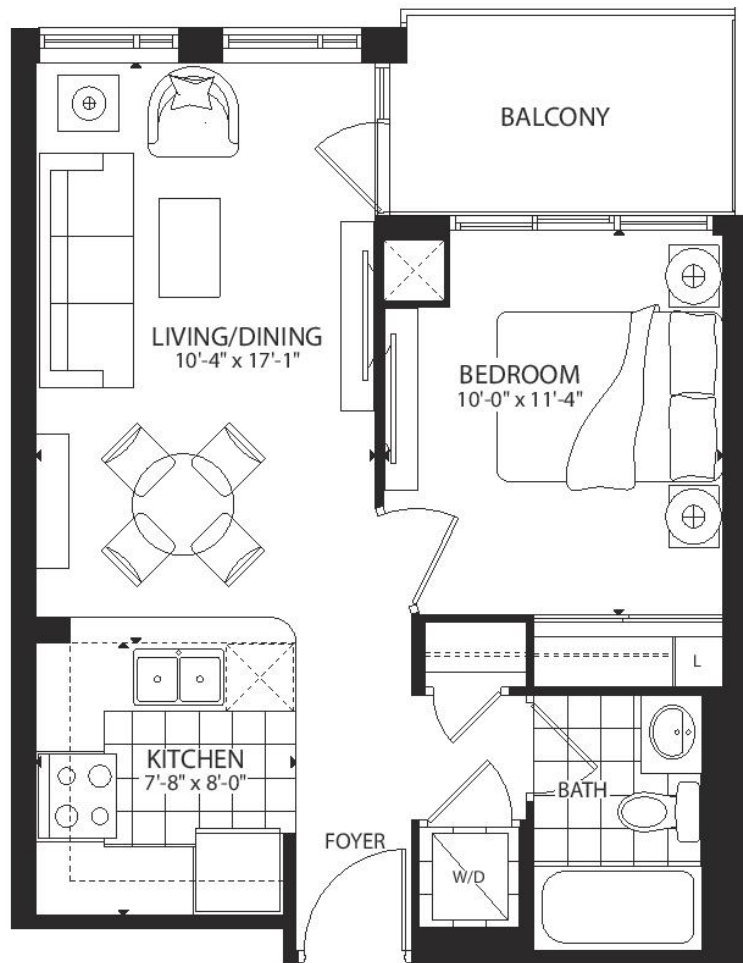


Main Level 515 Sq. Ft.



80 Esther Lorrie Drive

Unit 817

TAXES: \$1,487.74/2019

BEDROOMS: 1

BATHROOMS: 1x4

PARKING: 1 underground Level B #63

LOCKER: 1 Level B #133

POSSESSION: Immediate/TBA

MAINTENANCE FEE:

\$475.65/month (includes: heat, water, building insurance, common elements, parking & central air conditioning)



Signature Realty
IND. OWNED & OPERATED BROKERAGE

Karen
MOLLARTEAM
BROKER

EXCEEDING YOUR EXPECTATIONS

416.443.0300 • karenmillarteam.com • karen@karenmillar.com

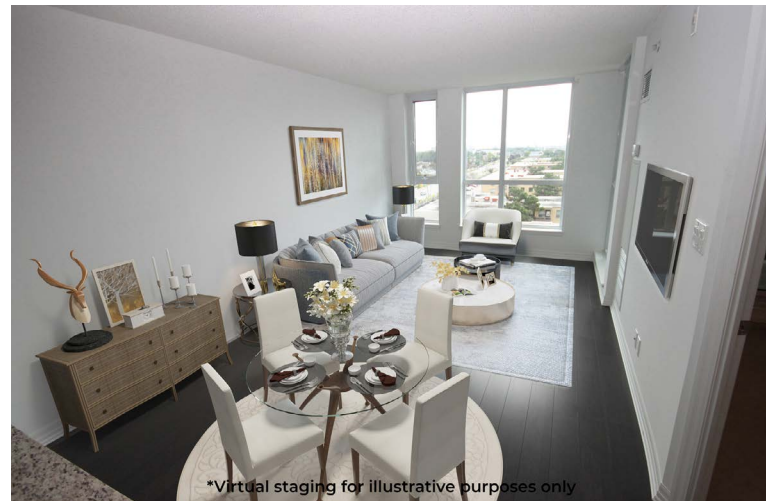


Prospective purchasers should satisfy themselves as to the accuracy of the information contained in this feature sheet. All measurements are approximate. The statements contained herein are based on sources which we believe are reliable, but for which we assume no responsibility.





*Virtual staging for illustrative purposes only



*Virtual staging for illustrative purposes only



*Virtual staging for illustrative purposes only



FOYER

- Coat closet
- Engineered laminate flooring
- Access to laundry closet with stacked washer & dryer

KITCHEN

- Ceramic tile flooring
- Granite countertop
- Breakfast bar
- Built-in Whirlpool dishwasher
- Whirlpool stove
- Whirlpool fridge
- Built-in Whirlpool microwave & hood vent
- Ceramic tile backsplash
- Overlooks Living/Dining Room
- Open concept

LIVING/DINING ROOM

- Open concept
- Engineered laminate flooring
- Walk-out to large balcony
- Wall-to-wall windows
- South facing treelined views

BEDROOM

- Broadloom
- Wall-to-wall windows
- Walk-out to large balcony
- Large sliding door double closet
- South facing tree lined views

4 PIECE BATHROOM

- Ceramic tile flooring
- Porcelain tile surround

AMENITIES

- Guest suites
- Gym
- Indoor pool
- Party
- Meeting room
- Rooftop deck & garden
- Visitor parking
- 24/7 security & concierge
- BBQ permitted

