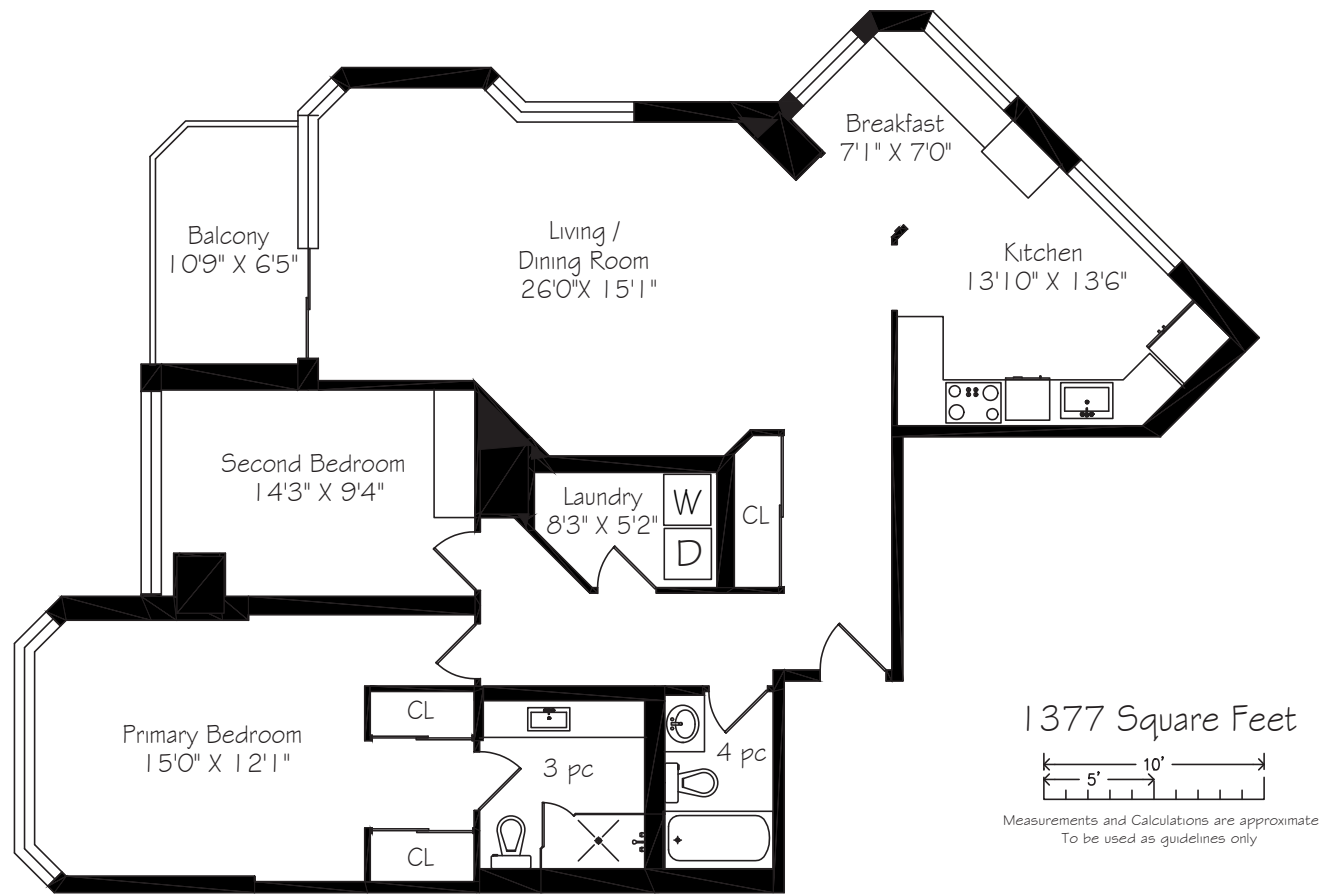


# Floor Plan



# 1121 Steeles Ave W

— PENTHOUSE 211 —



**TAXES:** \$2,303.52/21

**BEDROOMS:** 2 + 1

**LOCKERS:** 2

**BATHROOMS:** 1x4, 1x3

**PARKING:** 2 car parking

**POSSESSION:** 30 days/TBA

**MAINTENANCE FEE:**

\$977.94/month (includes water, heat, hydro, basic cable, central air conditioning, parking, common elements & building insurance)

**ROYAL LEPAGE** Signature Realty  
IND. OWNED & OPERATED BROKERAGE

*Karen*  
**MOLLARTEAM**  
BROKER  
EXCEEDING YOUR EXPECTATIONS

416.443.0300 • karenmillarteam.com • karen@karenmillar.com



Prospective purchasers should satisfy themselves as the accuracy of the information contained in this feature sheet. All measurements are approximate. The statements contained herein are based on sources which we believe are reliable, but for which we assume no responsibility.



### SPECIAL FEATURES

- End unit
- Panoramic North-east and south-east views
- Sun-filled
- Two parking spots
- Two lockers
- Updated Kitchen '16
- Updated Ensuite Bathroom '19

### FOYER

- Oversized mirrored double closet
- Ceramic tile flooring
- Wall-to-wall mirror
- Wainscoting
- Storage cubby

### DINING/ LIVING ROOM

- Open concept
- Sun-filled
- Laminate flooring
- Sliding door walk-out to a large private balcony
- Panoramic views
- California style shutters
- Crown moulding
- Storage/shelving unit

### BREAKFAST ROOM

- Open concept
- Sun-filled
- Laminate flooring
- Built-in hideaway storage bench
- Wrap-around windows
- Panoramic views

### KITCHEN

- Stone countertops
- Glass tile backsplash
- Under-cabinet lighting
- Large picture window
- Ceramic tile flooring
- Oversized stainless-steel inlay sink
- Soft-close cabinetry & sliding pot drawers
- Built-in storage nook with stone countertop & soft close cabinetry
- Built-in stainless-steel stove vent
- Kenmore stainless-steel French door bottom mount fridge
- Built-in dishwasher 'as is'
- Kenmore stainless-steel cooktop

### 4 PIECE BATHROOM

- Ceramic tile flooring
- Built-in mirrored storage cabinet

### LAUNDRY ROOM

- Maytag washer 'as is' & Beaumark dryer 'as is'
- Built-in shelving
- Storage/shelving unit

### PRIMARY BEDROOM

- California style shutters
- Panoramic views
- Laminate flooring
- Two mirrored double closets

### 3 PIECE ENSUITE BATHROOM

- Porcelain tile flooring
- Large vanity with stone countertop, soft close cabinetry, inlay sink & built-in storage cabinet
- Walk-in glass door shower with ceramic tile surround

### BEDROOM

- Laminate flooring
- California style shutters
- Built-in floor-to-ceiling storage/entertainment unit
- Panoramic views
- Track lighting
- Crown moulding

### IN YOUR NEIGHBOURHOOD

- G Ross Lord Park & Reservoir
- Haryetta Gardens & Hidden Trail Park
- Esther Shiner Civic Stadium
- Westminster Creek
- Bathurst Village Market
- Fresh Co & Metro
- Centerpoint Mall
- Promenade Mall
- Steeles Square
- Rio Can Marketplace, Home Depot & Winners
- Rockford Public School
- Fisherville Senior Public School
- Newtonbrook Secondary School

### AMENITIES

- Gatehouse security
- Outdoor pool
- Exercise room
- Party/media room
- Tennis courts
- Squash court
- Games room
- Visitor parking