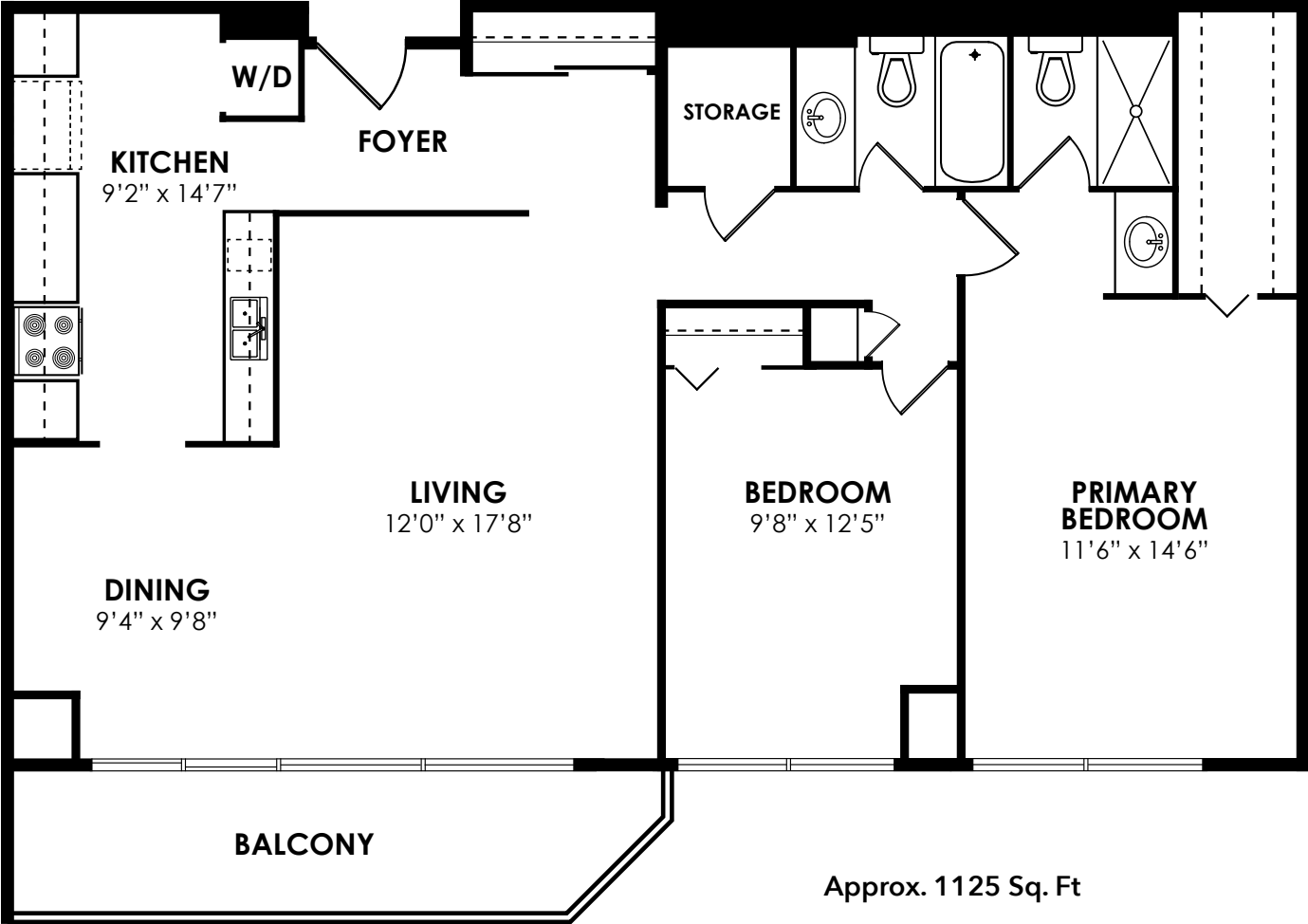


Floor Plan



75 Wynford Heights Crescent

Suite 1105



TAXES: \$2,107.99/2021
PARKING: 1 oversized underground spot
BEDROOMS: 2
POSSESSION: 30 days/TBA
BATHROOMS: 1x4, 1x3
LOCKER: 1 + ensuite
MAINTENANCE FEES:
\$1,047.31/month (includes: water, heat, hydro, basic cable, central air conditioning, building insurance, common elements & parking)

ROYAL LEPAGE Signature Realty
IND. OWNED & OPERATED BROKERAGE

[LinkedIn](#) [Facebook](#) [Twitter](#) [YouTube](#) [Instagram](#)

Karen
MOLLARTEAM
BROKER
EXCEEDING YOUR EXPECTATIONS
416.443.0300 • karenmillarteam.com • karen@karenmillar.com

Prospective purchasers should satisfy themselves as the accuracy of the information contained in this feature sheet. All measurements are approximate. The statements contained herein are based on sources which we believe are reliable, but for which we assume no responsibility.



SPECIAL FEATURES

- Totally renovated '13
- Ravine views
- Oversized underground parking spot close to elevator
- Oversized storage locker on same level as parking
- Amazing amenities
- Marchelo's Market
- Tim Hortons
- Canadian Superstore
- Steps to Charles Sauriol Conservation area/ walking trails
- Steps to new LRT, TTC, DVP & Highway 401
- CF Shops at Don Mills
- Don Mills Public Library

FOYER

- Engineered hardwood flooring
- Oversized double door coat closet
- Crown moulding
- Linen closet
- Large walk-in ensuite locker with built-in shelving & Danby deep freezer

KITCHEN

- Engineered hardwood flooring
- Pantry with sliding drawer storage
- Sliding pot drawers
- Stone counters
- Stainless-steel inlay double sink
- Tumbled stone backsplash
- Samsung stainless-steel French door bottom mount fridge
- Bosch built-in stainless-steel dishwasher
- GE Profile built-in stainless-steel microwave
- GE Profile stainless-steel stove
- Laundry closet with Samsung stacked front loading washer & dryer

DINING ROOM

- Open concept
- Ravine views
- Crown moulding
- Custom shades
- Engineered hardwood flooring
- Sliding door walk-out to large balcony

LIVING ROOM

- Open concept
- Engineered hardwood flooring
- Ravine views
- Crown moulding
- Custom shades

4 PIECE BATHROOM

- Porcelain flooring
- Large vanity with stone countertop
- Ceramic tile surround

PRIMARY BEDROOM

- Broadloom
- California style shutters
- Ravine views
- Large-walk-in closet with lighting & built-in shelving

3 PIECE ENSUITE BATHROOM

- Custom built-in vanity with stone countertop
- Walk-in glass shower with ceramic tile surround & glass tile accents
- Pot lights
- Porcelain flooring

BEDROOM

- Ravine views
- California style blinds
- Engineered hardwood flooring
- Built-in electric fireplace with stone surround
- Crown moulding
- Closet

AMENITIES

- Visitor parking
- Concierge
- Tennis courts
- Indoor pool
- Exercise room
- Meeting room
- Squash/racquet courts

