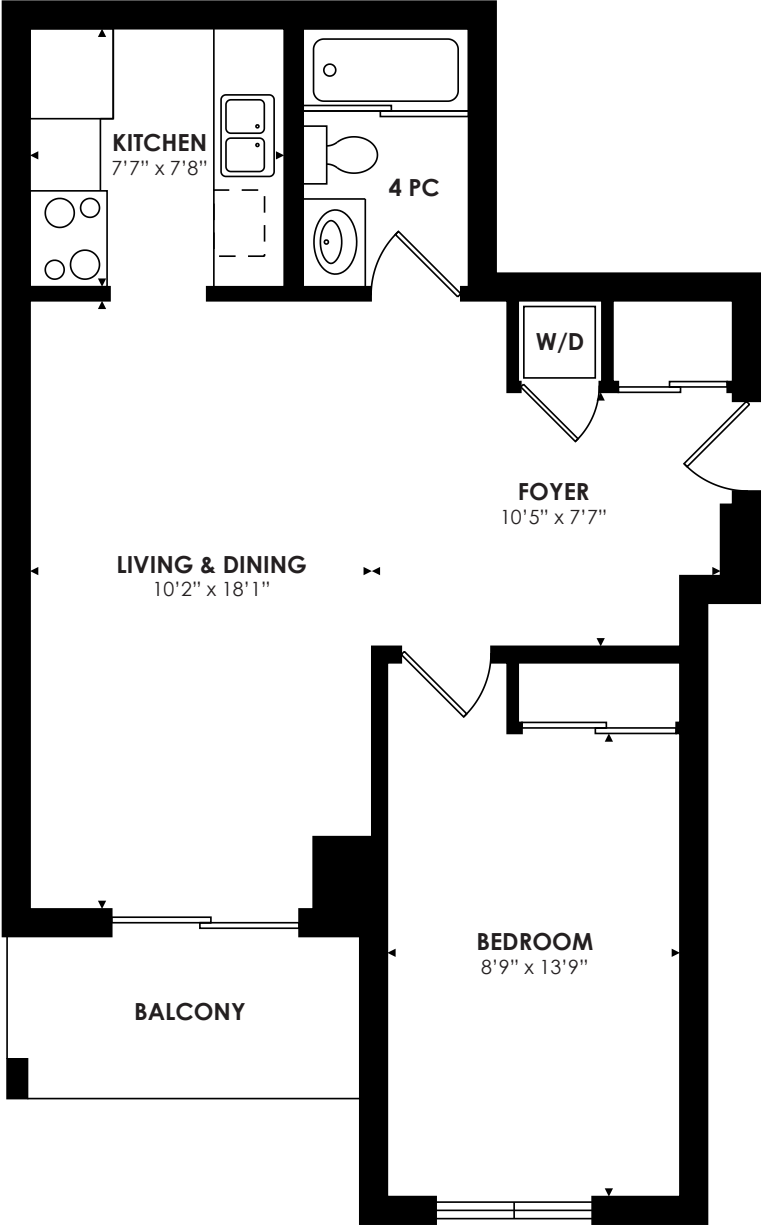


MAIN FLOOR 606 SQ FT



# 260 DORIS AVENUE

## SUITE 301



**TAXES:** \$1,832.60/2022  
**LOCKER:** 1 (Level B #134)

**BEDROOMS:** 1  
**BATHROOMS:** 1x4

**PARKING:** 1 underground spot (level C #59)  
**POSSESSION:** Immediate/TBA

**MAINTENANCE FEES:**  
\$573.73/month (includes: heat, hydro, water, central air, building insurance, common elements and parking)

For more photos & information on this property

SCAN HERE



EXCEEDING YOUR EXPECTATIONS



direct 416.390.2566 | office 416.443.0300 | fax 416.443.8619 | karen@karenmillar.com | karenmillarteam.com

Prospective purchasers should satisfy themselves as the accuracy of the information contained in this feature sheet. All measurements are approximate. The statements contained herein are based on sources which we believe are reliable, but for which we assume no responsibility.







#### FOYER

- Laminate flooring
- Sliding double door coat closet
- Access to laundry closet with stacked Whirlpool washer & dryer

#### LIVING/DINING ROOM

- Open concept
- Laminate flooring
- Track lighting
- Sliding glass door walk-out to private balcony

#### KITCHEN

- Ceramic flooring
- Built-in range hood
- Whirlpool stove
- Whirlpool fridge
- Whirlpool built-in dishwasher

#### BEDROOM

- Laminate flooring
- Sliding double door closet with built-in organizers
- Picture window

#### 4 PIECE BATHROOM

- Vanity with built-in double door storage
- Built-in mirrored storage cabinet

#### AMENITIES

- Visitor parking
- Concierge/security
- Gym
- Party/meeting room
- Sauna
- Guest suites

#### IN YOUR NEIGHBOURHOOD

- John McKenzie Parkette
- Parkview Neighbourhood Garden
- Yonge Street shops & restaurants
- North York Centre
- Yonge Sheppard Centre
- Metro Grocery Store
- Shoppers Drugmart
- TTC & Yonge subway line
- Highway 401
- Cineplex Cinemas Empress Walk
- Loblaws (Empress Walk)
- H-Mart (Asian grocery store chain)
- Food Basics
- Mel Lastman Square & skating rink
- Douglas Snow Aquatic Centre
- Willowdale Lawn Bowling Club
- Toronto Public Library
- Mitchell Field Community Centre
- Mitchell Field Park
- Upper Canada Skating Club

