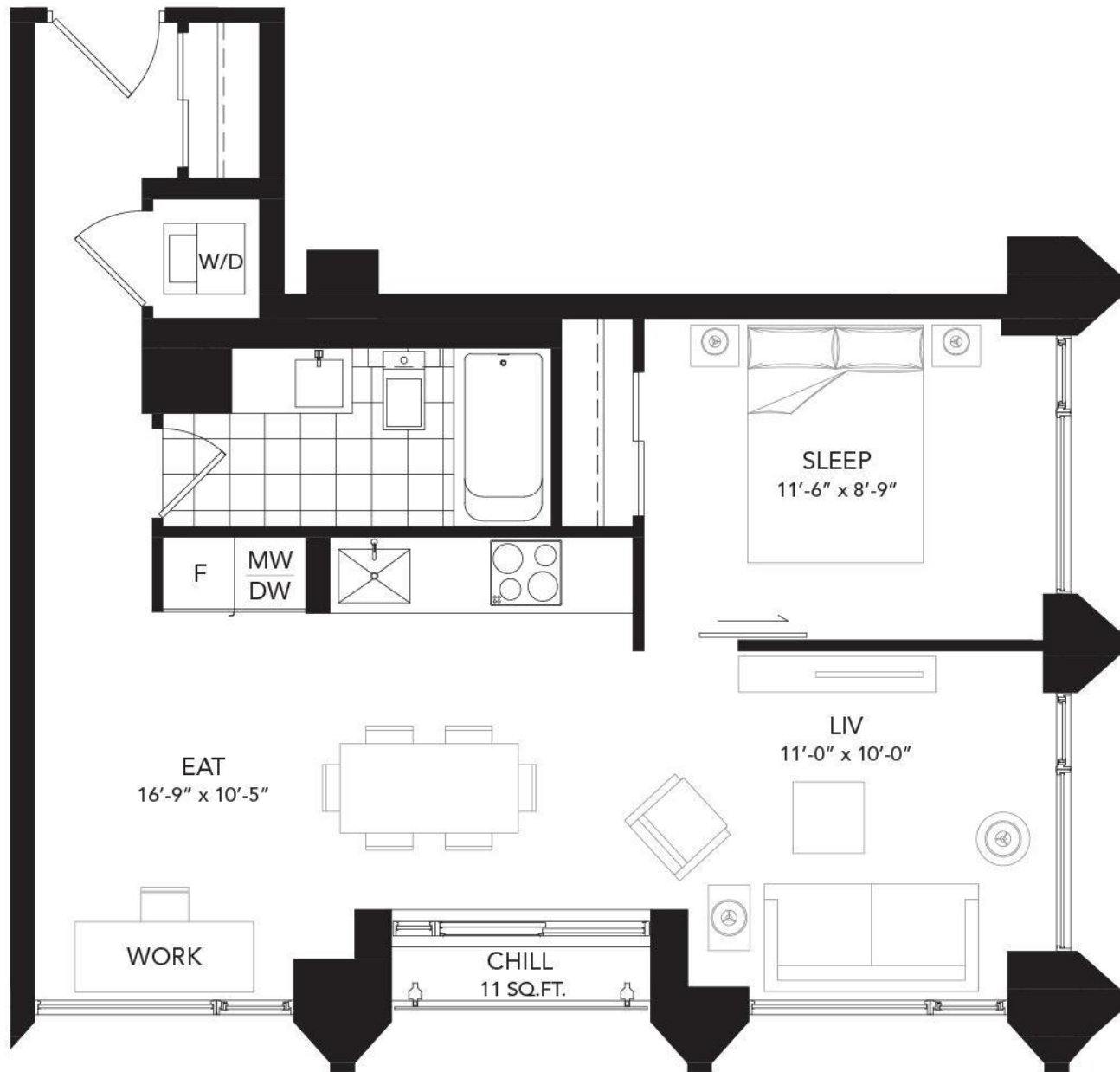


WELCOME TO

75 The Donway West

SUITE 206



TAXES: \$2,173.85/2022

PARKING: B67

BEDROOMS: 1+Den

LOCKER: B167

BATHROOMS: 1x4

POSSESSION: Immediate/TBA

MAINTENANCE FEES:

\$571.02/month (includes water, heat, central air conditioning, parking, locker, building insurance, common elements)

For more photos & information on this property

SCAN HERE



EXCEEDING YOUR EXPECTATIONS



direct 416.390.2566 | office 416.443.0300 | fax 416.443.8619 | karen@karenmillar.com | karenmillarteam.com

Prospective purchasers should satisfy themselves as the accuracy of the information contained in this feature sheet. All measurements are approximate. The statements contained herein are based on sources which we believe are reliable, but for which we assume no responsibility.



FOYER

- Engineered hardwood flooring
- Mirrored sliding double door coat closet
- Access to laundry closet with stacked Blomberg front loading washer & dryer

4 PIECE BATHROOM

- Large soaker tub
- Glass tile tub surround
- Ceramic tile flooring
- Vanity with quartz inlay countertop & built-in storage

DINING ROOM

- Open concept
- Engineered hardwood flooring
- 10-foot ceilings
- Floor-to-ceiling, wall-to-wall windows
- Custom shades
- Overlooks the park

KITCHEN

- Open concept
- Engineered hardwood flooring
- 10-foot ceilings
- Halogen lighting
- Juliette balcony
- Quartz countertop
- Stainless-steel inlay sink with handheld wand
- Glass tile backsplash
- Custom shades
- Overlooks the park
- Blomberg stainless-steel fridge
- Blomberg stainless-steel Panasonic microwave
- Blomberg stainless-steel built-in dishwasher
- Falmecc built-in stainless-steel stove vent
- Whirlpool built-in cooktop
- Whirlpool built-in oven

LIVING ROOM

- Open concept
- 10-foot ceilings
- Engineered hardwood flooring
- Wall-to-wall, floor-to-ceiling windows
- Overlooks the park
- Custom shades

BEDROOM

- Sliding barn door entrance
- 10-foot ceilings
- Engineered hardwood flooring
- Custom shades
- Wall-to-wall, floor-to-ceiling windows
- Oversized sliding mirrored double door closet with built-in organizers

AMENITIES

- Guest suites
- Gym
- Party/meeting room
- Visitor parking
- Concierge
- Rooftop deck/garden

IN YOUR NEIGHBOURHOOD

- The Shops at Don Mills
- VIP Cineplex movie theatre
- Metro Grocery Store
- McEwan Grocery Store
- LCBO
- Don Mills Public Library
- Bond Park
- Don Mills Tennis Club
- Edwards Gardens
- Steps to Don Mills walking trail which links to York Mills Gardens/Longo's to Wilket Creek Park
- Steps to Don Mills and Lawrence TTC routes & soon-to-be LRT

