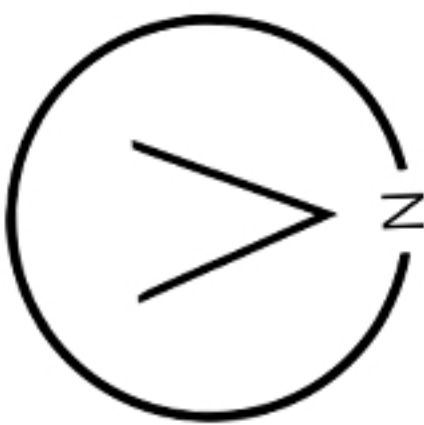
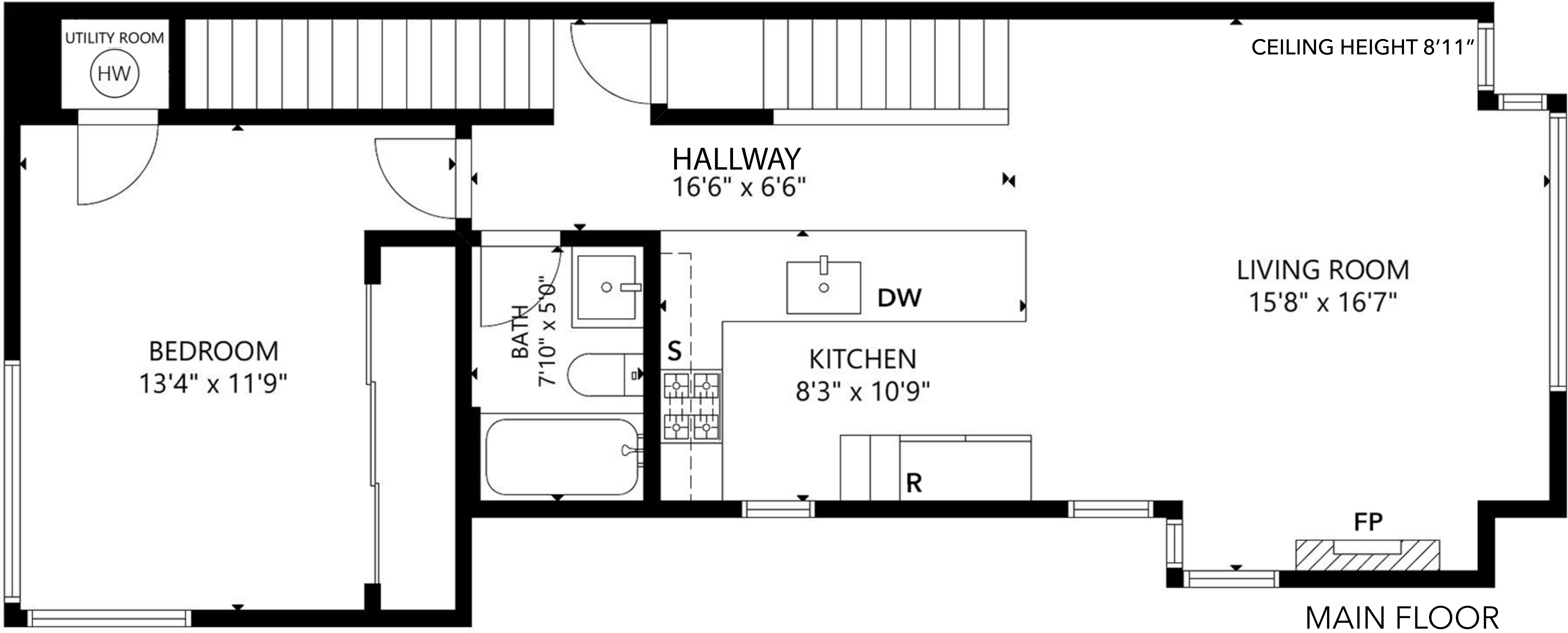
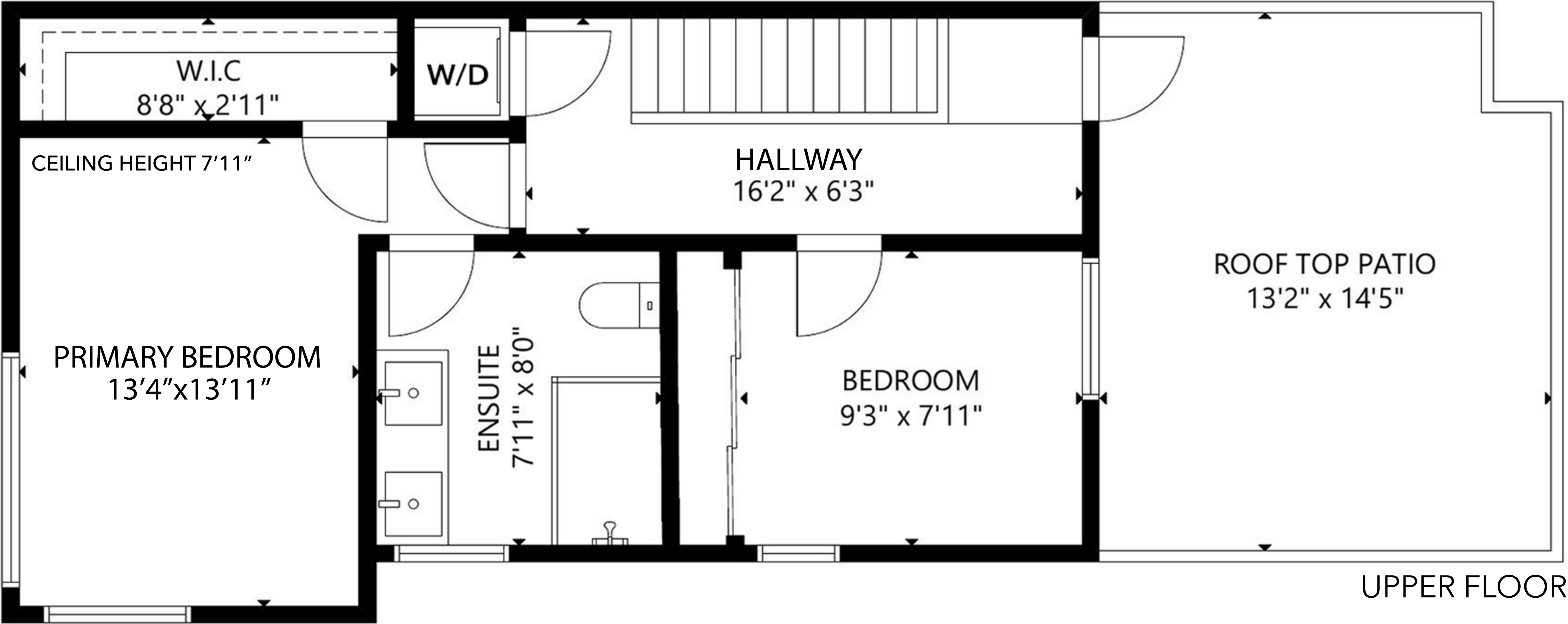
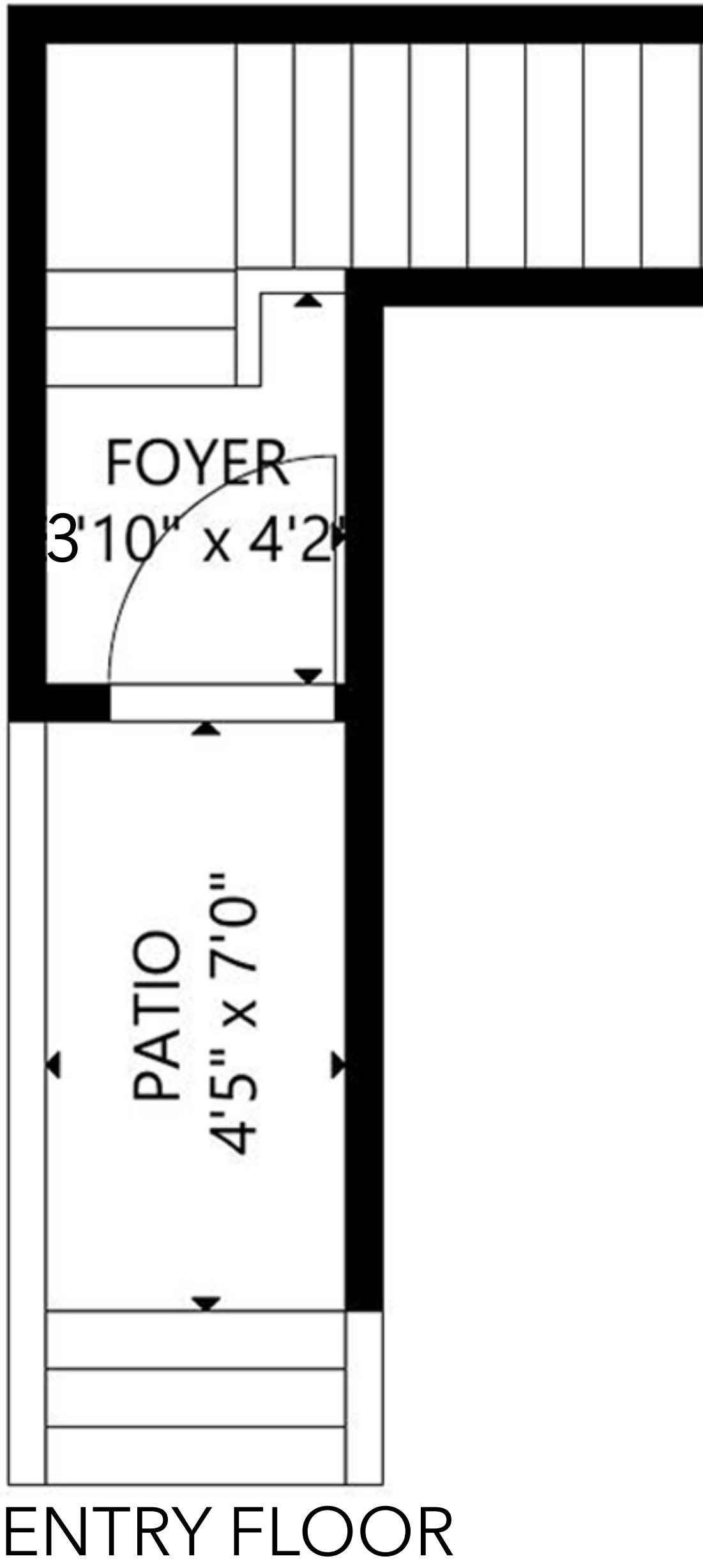


621 Victoria Drive, Vancouver, BC

THE
KATE
MACPHAIL
GROUP

3 BEDROOM + 2 BATHROOM	
ENTRY FLOOR:	75 SQFT
MAIN FLOOR:	704 SQFT
UPPER FLOOR:	485 SQFT
TOTAL INTERIOR:	1264 SQFT
ROOF TOP PATIO:	177 SQFT



Stilhavn Real Estate Services
778 889 5283
katemacphailgroup.com

WWW.LASKOVISUALS.COM

PHOTOS - VIDEO - MATTERPORT - 2D+3D FLOOR PLANS