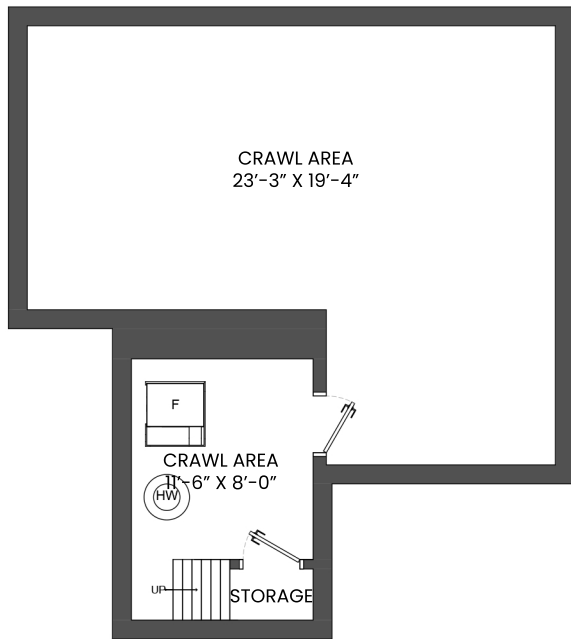
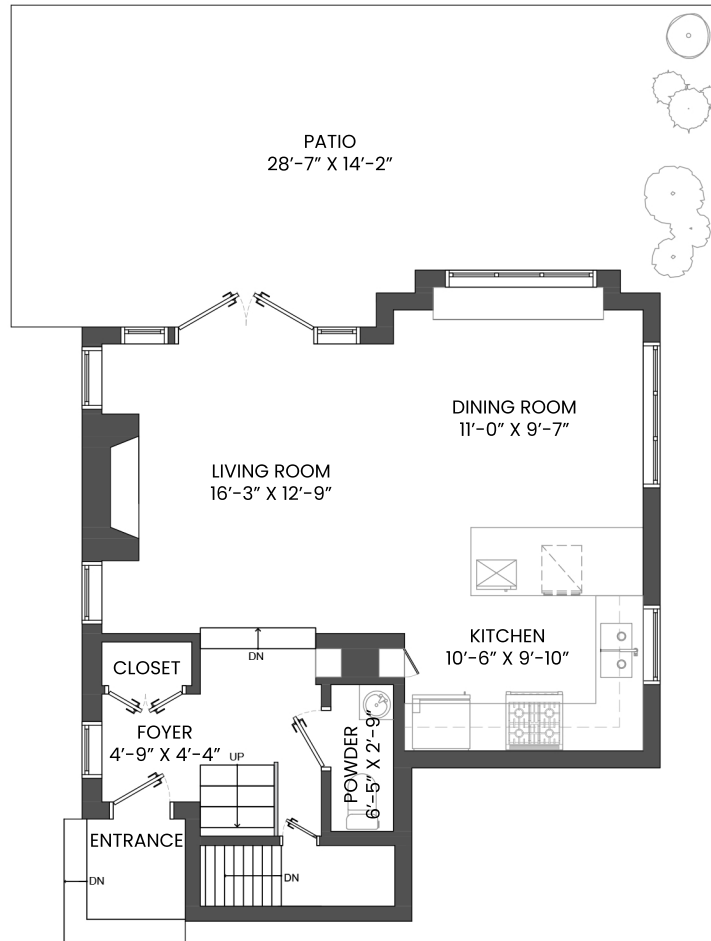


## 2-3651 WEST 5TH, VANCOUVER, BC

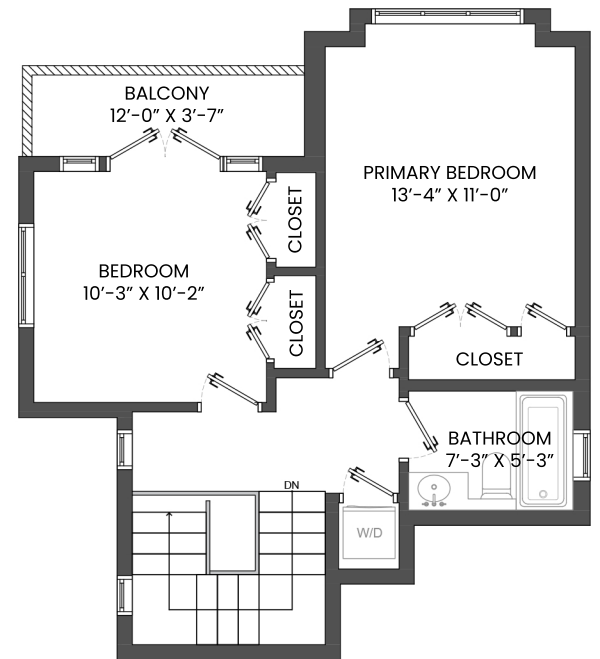
MAIN FLOOR TOTAL: 570 SQ.FT. CRAWL AREA: 557 SQ. FT.  
 UPPER FLOOR TOTAL: 519 SQ.FT. PATIO: 377 SQ. FT.  
 TOTAL: 1,089 SQ.FT. GARAGE: 236 SQ. FT.  
 BALCONY: 43 SQ. FT.



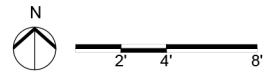
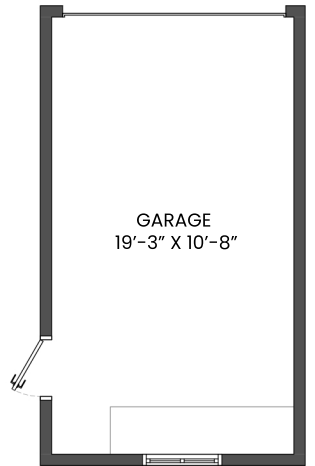
**LOWER FLOOR PLAN**  
 Ceiling Height: 4'-6"



**MAIN FLOOR PLAN**  
 Ceiling Height: 8'-8"



**UPPER FLOOR PLAN**  
 SLOPED CEILING HEIGHT  
 FROM 11'-7" TO 9'-0"



**Kate MacPhail** PREC\*

778.889.5283

kate@katemacphailgroup.com

**stillhavn**  
 REAL ESTATE SERVICES

