

# KEN STEF

PERSONAL REAL ESTATE CORPORATION

778.980.0066    kenneth@kenstef.com  
www.kenstef.com

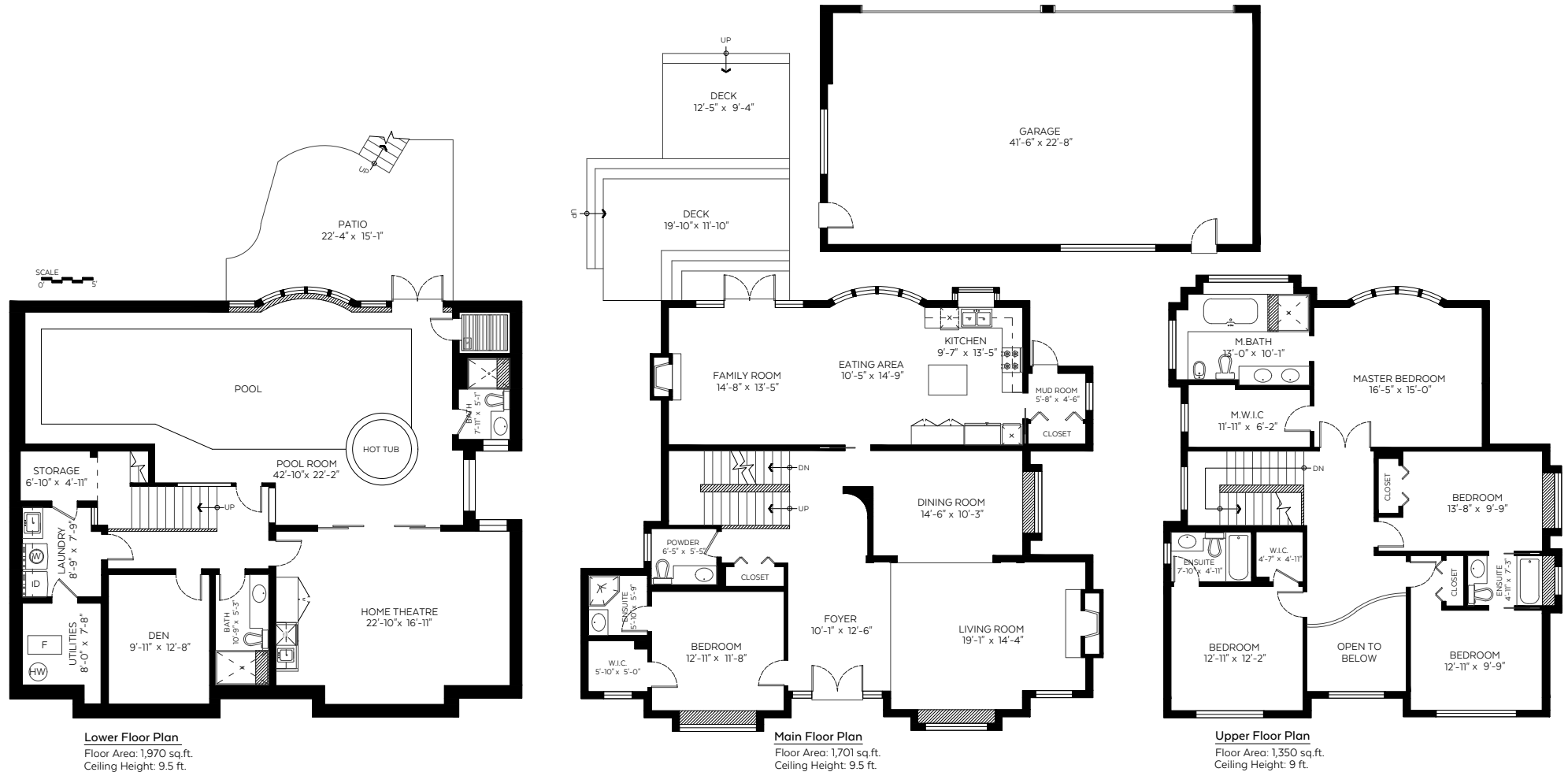


1128 West 49th Avenue, Vancouver, B.C.

Main Floor:	1,701 sq.ft.
Upper Floor:	1,350 sq.ft.
Lower Floor:	1,970 sq.ft.
<b>Total:</b>	<b>5,021 sq.ft.</b>
Open to Below:	81 sq.ft.

### Auxiliary Area

Garage:	1,030 sq.ft.
Patio:	276 sq.ft.
Deck:	396 sq.ft.



Valid Until: October 11, 2021



The floor plan is not suitable for architectural/construction and is covered under E&O. © Excelsior Measuring Inc. 2019. All rights reserved for Excelsior Measuring Inc. Users shall not publish and distribute such material (in whole or in part) and/or incorporate it in other works in any form.

