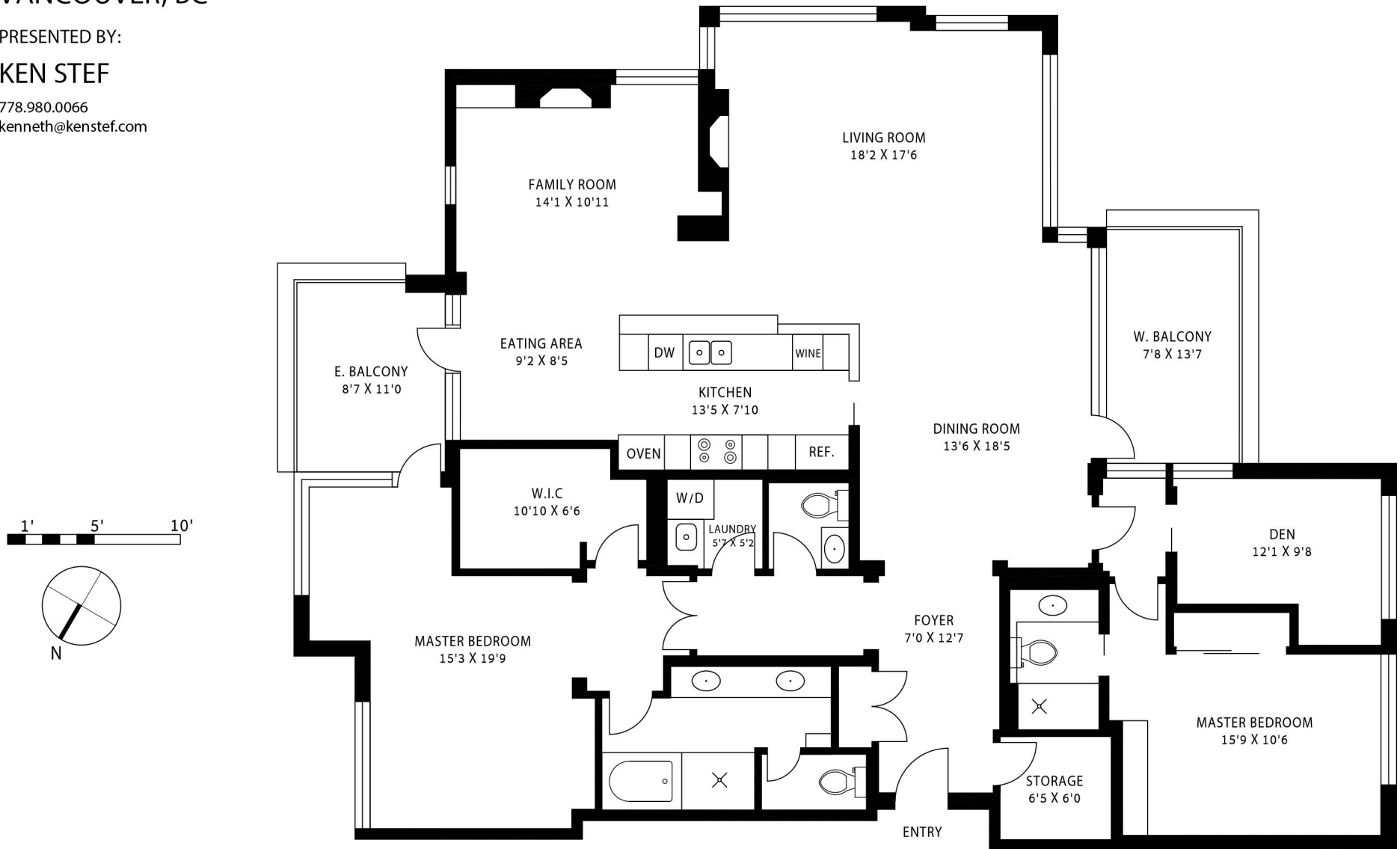


708 - 4685 VALLEY DR  
VANCOUVER, BC

PRESENTED BY:

KEN STEF

778.980.0066  
kenneth@kenstef.com



TOTAL LIVABLE AREA 2256 sqft

EAST BALCONY 96 sqft  
WEST BALCONY 108 sqft

THIS FLOORPLAN IS FOR ILLUSTRATION PURPOSES ONLY AND ALL DIMENSIONS SHOULD BE CONSIDERED APPROXIMATE

